



# **ZEPRO SOLAR CHARGING SOLUTION**

## **MAXIMISE THE USE OF YOUR TAIL LIFT**







# STAY CHARGED

Research shows that most road calls are related to power failures. The ZEPRO Solar charging solution resolves this problem by generating power through solar panels on the roof of your truck or trailer and storing it in your tail lift battery.

- Unlimited energy source
- Power generation without marginal cost
- Supports battery charging to optimum level
- Charging continues even when your vehicle is stationary
- Never overcharges
- Suitable for retrofits and new equipment

**SOLAR**   
**CHARGER**

---

## Diesel vehicles and trailers

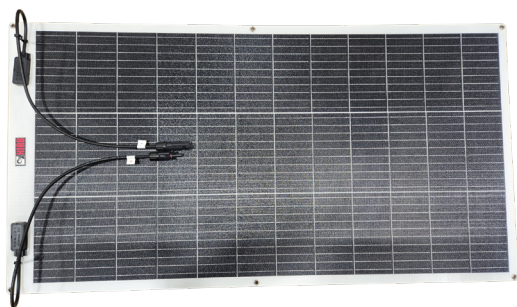
Maximise the use and service life of your tail lift while keeping battery performance and reducing emissions.

- Extend battery life by maintaining optimum health
- Protect your tail lift by avoiding voltage drops
- Reduce emissions by avoiding idling
- Avoid start up issues with optimal charge
- Charging source independent of tractor

## Electric vehicles

Maximise the use of your tail lift while protecting the range of your electric vehicle.

- Preserve your vehicle range when using your tail lift
- Provide additional power to support ancillary equipment



## Solar panels

The lightweight solar panels are simple, modular, and easy to install. They can be configured to fit all kinds of trucks without affecting unit overall height.



## Solar controller

With a controller to prevent overcharging, your battery lasts up to 50% longer and the only maintenance it needs is an annual inspection.

# WHY CHOOSE SOLAR POWER?

The sun's power is unlimited, making it our most reliable energy source. It's clean, cost-effective, and infinitely renewable. More importantly, with solar power your tail lift battery never dies. It keeps charging even when your vehicle is stationary, and never overcharges. All this means you can put an end to stops caused by power problems and maximise the uptime of your fleet.

Issue	Without Solar	With Solar
Vehicle idling to produce power to the battery (diesel)	Fuel costs, noise, and air pollution	Zero fuel cost, quiet and clean operation
Battery replacement	6 – 18 months	2 – 5 years
Tail lift cycles per day from regular vehicle battery	10 – 30 cycles depending on drive time	Up to 25 additional cycles per day (200 W)*

\* Based upon the tail lift being powered by the vehicle battery.

## Specification

System charge voltage	12V	24V
Max rated system charge current	30 A	
Max system input Power	400W	800W
Max system input Voltage	100V (4 solar panels connected in series)	
100W panel voltage	21V	
100W panel dimensions	1030 x 546 x 2,5 mm	
Weight of module	9,5 - 26,3 kg	

## Outstanding and proven solution

- Intelligent solar controller
- Cells on panels won't crack
- One cell broken – remaining cells on panel keep working
- 5 years positive experience in the US mounted on vehicles and trailers with Hiab tail lifts
- 5 year warranty





PB-ZEPROXOLARCHARGER-EN-WW-250407

[zeapro.com](http://zeapro.com)

Hiab is a leading provider of smart and sustainable load handling solutions. We are committed to delivering the best customer experience every day with the most engaged people and partners. Hiab's premium equipment includes HIAB, EFFER and ARGOS loader cranes, MOFFETT and PRINCETON truck mounted forklifts, LOGLIFT forestry cranes, JONSERED recycling cranes, MULTILIFT skiploaders and hooklifts, GALFAB roll-off cable hoists, and tail lifts under the ZEPRO, DEL and WALTCO brands. As the industry pioneer, Hiab continues to make load handling smarter, safer and more sustainable to build a better tomorrow.

[www.hiab.com](http://www.hiab.com)

