



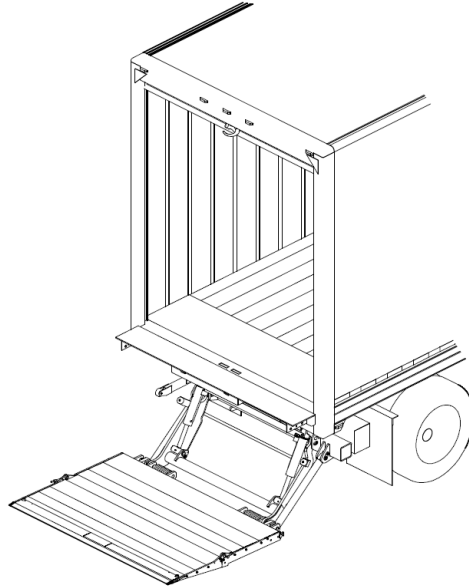
www.waltco.com
parts@waltco.com

Phone: 800.411.5685
Fax: 800.411.5684

Installation Manual

HLF-25, 30, 40 & 50

2500 lb, 3000, 4000 & 5000 LB. Capacity Flipaway Liftgates




Last Change(s)

Date	Page(s)	Description
1-2026	13	Updated Bed Extension graphic
	37	Updated 80101569
2/2026	18	Updated per EO11137, 80101776
	55	Added 80101786 work and arc light

Waltco Lift Corp.
Corporate Office United States
1777 Miller Pkwy
Streetsboro, OH 44241
P: 330.633.9191
F: 330.633.1418

Table Of Contents

	<p>Improper installation of this liftgate could result in severe personal injury or death.</p> <p>Read and understand the contents of these instructions before proceeding.</p> <p>When installed, this liftgate must not alter or prevent vehicle compliance to any existing state or federal standards.</p> <p>Each chassis manufacturer’s recommendations should be consulted for compliance.</p>
---	--

Introduction-----	3
Safety Information-----	4
Liftgate Terminology-----	6
Basic Mounting Requirements-----	9
Installation-----	10
Dock Bumper Top Bolt Installation-----	29
Placement of Decals-----	32
Lubrication Instruction-----	33
Final Inspection -----	34
<u>Optional Kit Instructions:</u>	
Hand Held Remote Kit-----	35
Kit #80000430	
Aux Batteries / Trailer Charging-----	36
Kits #80001321, #80001456	
Tractor Wiring Kit-----	42
Kit #80000618	
Dual Control Switch Kit-----	43
Kit #80000437	
Cab Shut-Off Kit-----	44
Kit #80000827	
Under-Ride Kit-----	45
Kit #22796001 – 22796016GV	
Trailer Interface Kit (Canadian Certified)-----	46
Kit #80001388	
Trailer Interface Kit-----	48
Kit #80000878	
Walk Ramp Kit -----	50
Kits #22766001 & 22766002	
Work Light and Arc Light Kit-----	55
Kits 80001595 & 80001596	
How to Order Parts-----	59

Introduction

If anyone observes improper installation, improper operation, or damage, they should immediately contact a qualified person for assistance and correction. We strongly urge anyone that has any questions or doubts as to the installation, condition, use, operation, maintenance or repair of the liftgate to contact us at Waltco where we have qualified personnel that will be happy to assist you. Telephone numbers and addresses of these locations are listed in the Owner's Manual and Installation Instructions.

INSTALLATION

Waltco liftgates should only be installed by those with sufficient basic skills to understand the installation and operation of the liftgate, along with the equipment on which the liftgate is being installed. Waltco's installation instructions are not intended to give rationale for all the instructions that are given; however, it is the intent of these instructions to give the installer both the operations and what we believe to be the most desirable sequence of implementing these operations. These instructions can in no way expand into an area where they will replace a qualified person, or clear thinking and a basic knowledge that must be possessed by the installer.

It has been our experience that a knowledgeable journeyman following these instructions and observing the operation of the liftgate will have a sufficient comprehension of the liftgate to enable this person to troubleshoot and correct all normal problems that may be encountered.

Failure to follow the installation instructions, adjustments and mounting dimensions may result in improper and unsafe operation of the liftgate. Unauthorized alterations of the liftgate can cause an undesirable and dangerous condition.

OWNER'S MANUAL

The Waltco Owner's Manual is intended to act as a guide for operation and routine maintenance but is no way intended to encourage usage or repair of the liftgate by those who are not qualified to do so.

The contents of the Owner's Manual include, but are not limited to general operation instructions, routine lubrication, parts list, and an outline of things that should be checked but may not be obvious to those not technically qualified. The manual assumes the liftgate is properly installed, undamaged and operates correctly. Improper installation, improper operation, or damage should be immediately corrected by a qualified person.

INSPECTION

As part of the regular inspection of a liftgate and after damage or suspicion of an overload, inspect for wear or structural damage and make necessary repairs or replacements. Check all structural components and their attachment to the liftgate for cracked welds, loose fasteners, wear and part deformation. Check cylinder and hose for leaks. Inspections and repairs should be made by a qualified mechanic.

REPLACEMENT PARTS

Use only Waltco original equipment replacement parts. Components of other liftgate manufacturers may outwardly appear to be the same but are not interchangeable with Waltco products. Waltco components are specifically designed for safety requirements, reliability and compatibility with our products. Refer to your Waltco Parts Manual when ordering parts. NOTE: When ordering, give model and serial number for liftgate.

DECALS

It is important that every vehicle that has a WALTCO Liftgate have legible DECALS clearly posted on the vehicle and an OWNER'S MANUAL in the vehicle at all times as a guide for proper operation and maintenance. Additional DECALS and OWNER'S MANUALS can be obtained from WALTCO LIFT CORP.

80101388

Rev 04 EO10758

Chapter 1 Safety Information



WARNING

Read, understand, and follow all of the warnings listed below.

Failure to follow these warnings could result in severe personal injury or death.

- * Read and understand the Owner's Manual, all decals and warnings on liftgate before operating liftgate.
- * Do not operate liftgate without a thorough knowledge and understanding of the operation of the liftgate.
- * Liftgate hazards can result in crushing or failing.
- * This liftgate is designed for loading and unloading cargo. If personnel are required to ride the liftgate, observe and familiarize yourself with the liftgate operation, decals and manuals. Ensure stable footing at all times.
- * Do not ride liftgate with unstable loads.
- * Wheeled loads must be properly retained from rolling.
- * Tall, high center of gravity loads must be retained from falling over.
- * **Never overload liftgate:**
Load platform as close to the vehicle and towards the middle of the platform as possible. Refer to Owner's Manual and capacity decal of liftgate for maximum load and load placement.
- * Keep hands and feet clear of all potential pinch points.
- * Never use liftgate if it shows any signs of structural damage such as cracked welds, bent or distorted members.
- * Do not attempt any repairs unless you are qualified to do so. Care should be taken when work is performed on a disabled liftgate located near moving traffic. When possible, the vehicle should be moved away from traffic areas for repair. Precautionary measures should be taken to ensure personal safety including those recommended in Federal Motor Vehicle Safety Standards 571.125.
- * When welding to liftgate, or liftgate components, take all necessary safety precautions, including using respiratory protection and other pertinent personal protective gear when welding harmful materials.
- * All protective covers, guards, and safety devices must be in place and access doors closed before operating liftgate.
- * Do not allow anyone to stand in or near area in which Platform will open and close before opening and closing Platform.
- * Do not allow anyone to stand near the Platform where a falling load could land on them.
- * Platform is always to be properly stored and secured for transit. See the Owner's Manual for details.
- * Take care to retain cargo during transit for liftgate Platforms which function as the tailgate or door of the cargo area. Small objects can fall through the space between the vehicle and the folded Platform.
- * A Lock-Out device or Shut-Off Switch should always be used to prevent unauthorized use of liftgate.
- * For liftgates with Runners, never use liftgate if Runners do not travel up or down freely and smoothly.
- * For liftgates with Roller Lifting Chain, the Chain should be replaced every (5) five years or 15,000 cycles, whichever comes first. Replace only with Waltco approved Roller Chain.
- * Never transfer loads which exceed lifting capacity on or over any part of the Platform or Bed Extension unless the liftgate is equipped with a special reinforced Platform and Platform Support Bars for use when the Platform is used as a loading ramp (dock board). Refer to the "Using Platform as a loading ramp" Chapter in the Operation Instructions of the BZ/RZ series Owner's Manual.
- * For liftgates equipped with Trailer Hitches, never exceed the rated capacity of the hitch. Do not exceed the vehicle's weight rating. Refer to the vehicle's Owner's Manual.
- * Vehicle must comply with all state and federal standards.
- * Follow the "Maintenance Guide" chapter in the Owner's Manual.

Chapter 1 Safety Information

Liftgates with Tilt Function

- * Proper use of the Control Switches is of extreme importance.
- * Improper use of Tilt Switch could cause load to fall from the Platform or damage the liftgate.
- * Platform should be in a generally horizontal position when raising or lowering with a load.
- * In any tilt position, the Platform may vary from level while raising or lowering the Platform.

Liftgates equipped with spring operated Cam Closer

- * Replace Cam Release Spring every (5) five years or 15,000 cycles, whichever comes first.

RGL Series Liftgates

- * Make certain Platform Brake mechanisms are operating properly.
- * The Runners are always to remain powered up against the Upstop Pins when in transit.
Inspect cables every (3) three months or 750 cycles, whichever comes first. Cables must be replaced if they show signs of wear, distortion, kinking or if any broken wires are visible.
- * Replace cables every (5) five years or 10,000 cycles, whichever comes first.

MDL Series Liftgates

- * Make certain Platform Brake mechanisms are operating properly.
- * The Platform Retaining Bar should be lowered into H-Frame Storage Plate when in transit.
Inspect Roller Chains every (3) three months or 750 cycles, whichever comes first. Roller Chains must be measured and checked for signs of stretching. If the chain is stretched by more than 3% they should be replaced.
Replace Roller Chains every (5) five years or 15,000 cycles whichever comes first. Replace only with WALTCO APPROVED Roller Chain.
- * Check that all connecting links at each end of Roller Chain are properly secured with proper cotter pins monthly.

This is the Safety Alert Symbol. This manual uses this symbol to alert you to potential personal injury hazards. Obey all safety messages that follow this symbol to avoid personal injury or death.

SIGNAL WORDS

WARNING

Indicates a potentially hazardous situation, which if not avoided, could result in death or serious injury.
Black letters on an orange background.



CAUTION

Indicates a potentially hazardous situation, which if not avoided, may result in minor or moderate injury.
May also be used to alert against unsafe practices.
Black letters on an yellow background.



NOTICE

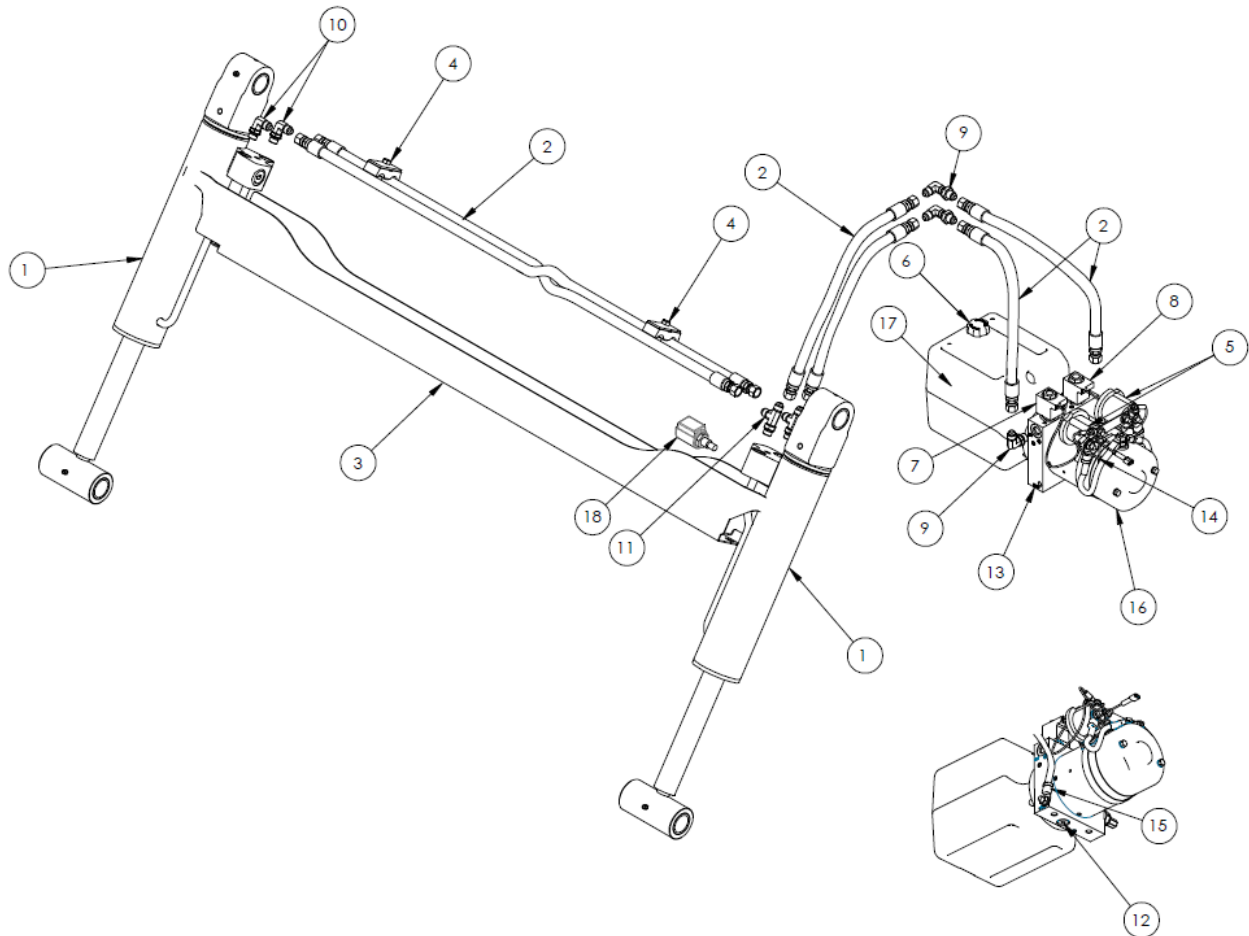
Indicates a potentially hazardous situation, which if not avoided, could result in property damage.



Chapter 2 Liftgate Terminology

1. Hydraulic Cylinder
2. Hose Assembly
3. Hose Guard
4. Dual Hose Clamp
5. Pump Unit Starter Solenoid
6. Breather Cap
7. Lowering Valve Coil
8. Raise Valve Coil
9. Bulkhead Elbow, 90 Deg.

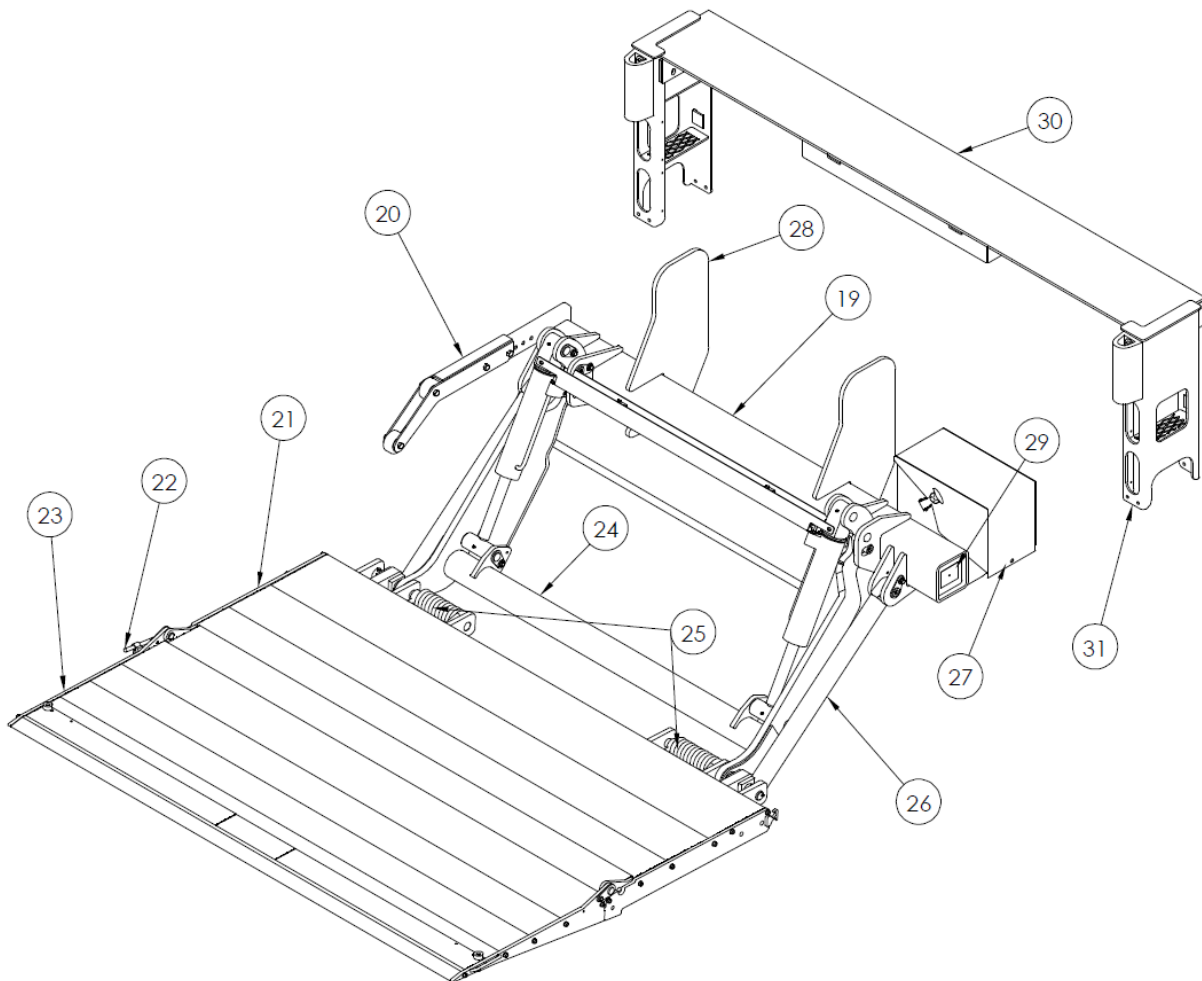
10. 90 Deg. Hose Fitting
11. Tee, Hose Fitting
12. Drain Plug
13. Pump
14. Thermal Switch (Inside Motor)
15. Ground Cable
16. Pump Unit Motor
17. Pump Unit Reservoir
18. Lock Valve



Chapter 2 Liftgate Terminology

- 19. Mount Tube Assembly
- 20. Parting Bar Assembly
- 21. Deck Assembly
- 22. Torsion Bar
- 23. Deck Extension Assembly
- 24. Lift Arm Assembly
- 25. Folding Assist Springs
- 26. Parallel Arm

- 27. Pump Box
- 28. Mount Plate
- 29. Spec Tag
- 30. Bed Extension
- 31. Dock Bumper



Chapter 2

Liftgate Terminology

Explanation of Specification Tag

Model Name	Description	Capacity
HLF25	Twin Cylinder	2500 lb.
HLF30	Twin Cylinder	3000 lb.
HLF40	Twin Cylinder	4000 lb.
HLF50	Twin Cylinder	5000 lb.

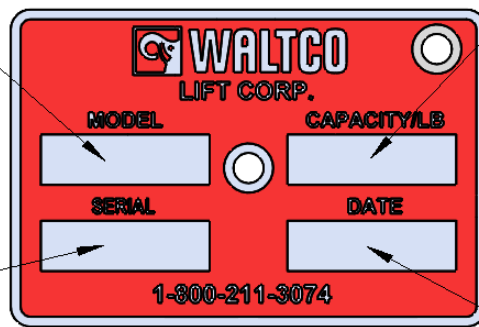
MODEL NAME

RATED CAPACITY

Based on an evenly distributed load on the platform flat surface

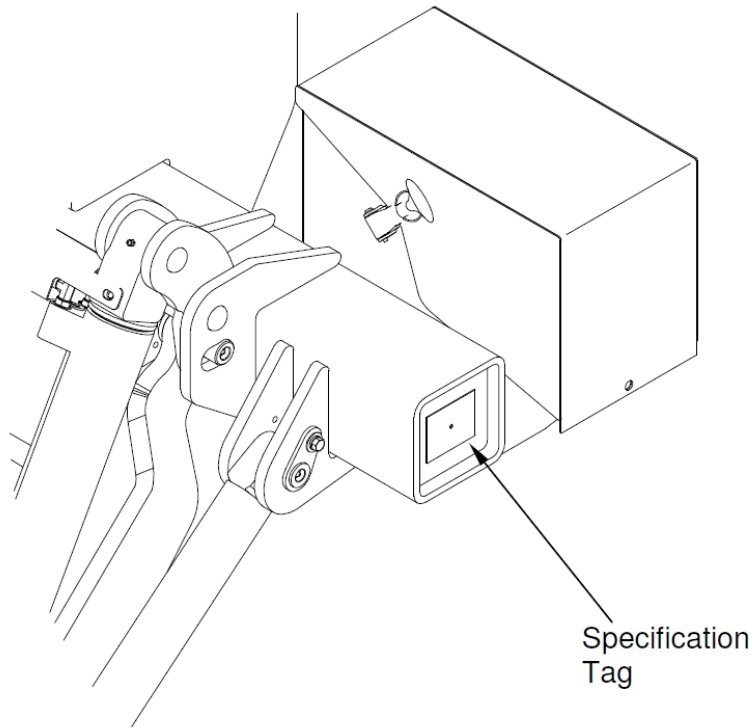
SERIAL NUMBER

of liftgate. To be used when ordering parts or when contacting Waltco for service or warranty questions



DATE OF MANUFACTURE

Month / Year



Chapter 3 Determine Basic Mounting Requirement

Measure distance from ground to floor level. This is the bed height.

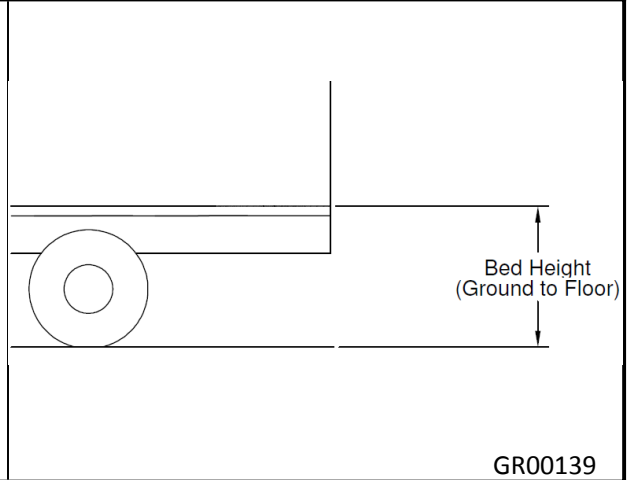
Refer to bed height dimension on mounting chart to determine basic mounting dimension "A" and minimum mount frame clearance required.

NOTE:

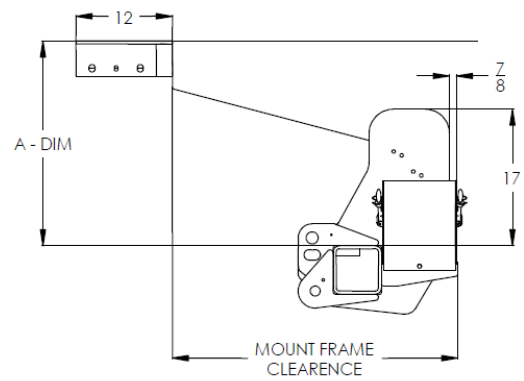
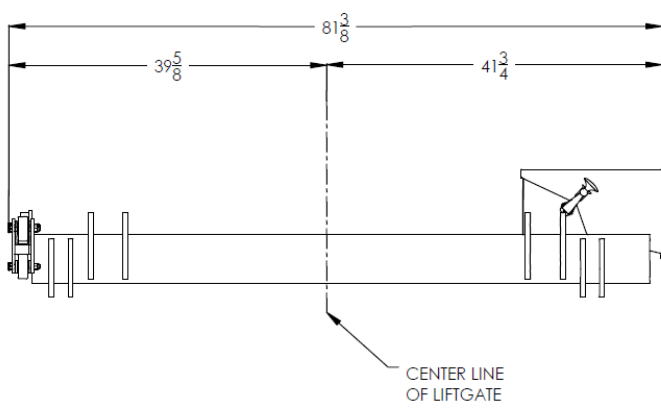
Max bed height dimensions for unloaded vehicle.
Min bed height dimensions for fully loaded vehicle

NOTE:

Tire clearance should be 6" minimum between tire and mount frame.



STANDARD BED HEIGHT MODELS		
MOUNTING CHART		
Bed Height	"A" Dimension	Mount Frame Clearance
46"-57"	25-1/2"	35-1/2"
57"-60"	26-1/2"	34-1/4"



GR02781

Chapter 4

Installation

PREPARATION OF BODY SILL

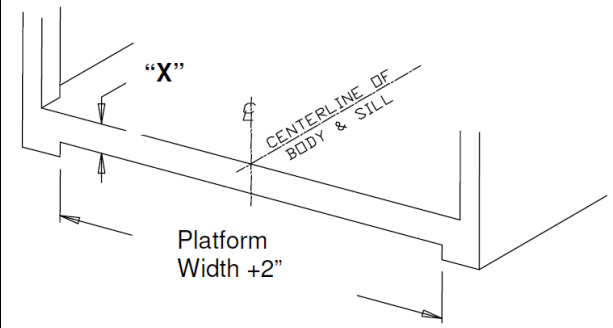
Remove all obstructions that would interfere with operation of Liftgate; such as dock bumpers, trailer hitches, projections, etc.

Locate and mark the center of body sill.

NOTE:

All mounting measurements for centering liftgate will come from centerline mark.

Body sill must have clearances indicated. Cut or notch rear sill to obtain these clearances.



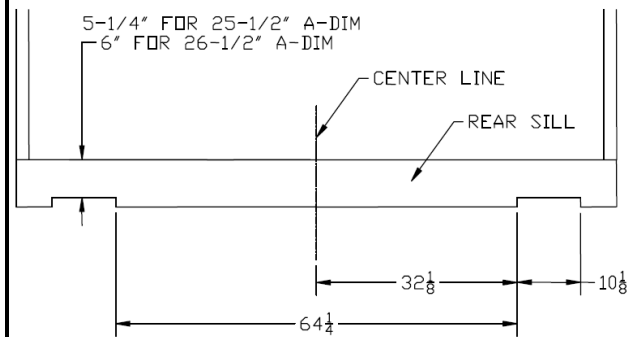
Hold "X" as follows:

"A" Dimension	"X" Max.
25-1/2"	6"
26-1/2"	7"

GR02184

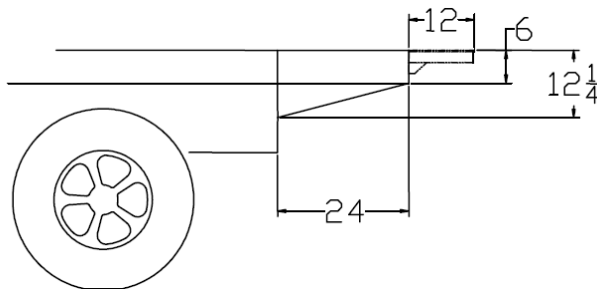
Additional Notching.

Additional notching of the rear sill may be necessary on units with larger sills.



GR02782

Cut away vehicle frame as required to obtain the minimum clearance indicated.



**46" TO 57"
BED HEIGHT**

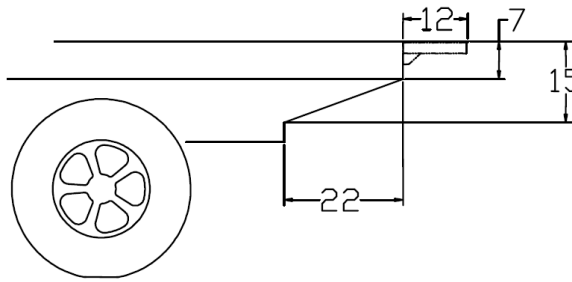
**25-1/2"
"A" Dimension**

GR02783

Chapter 4

Installation

Cut away vehicle frame as required to obtain the minimum clearance indicated.



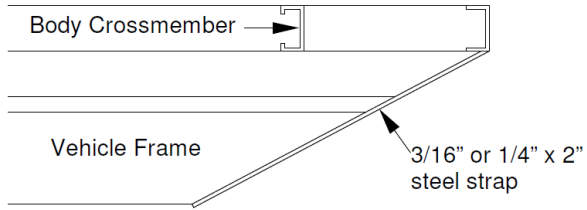
**57" TO 60"
BED HEIGHT**

**26-1/2"
"A" Dimensions**

GR02784

It is recommended to cap the Vehicle Frame using 3/16" or 1/4" x 2" steel strap.

Otherwise cleanup the frame and remove any sharp edges or burrs.



GR00625

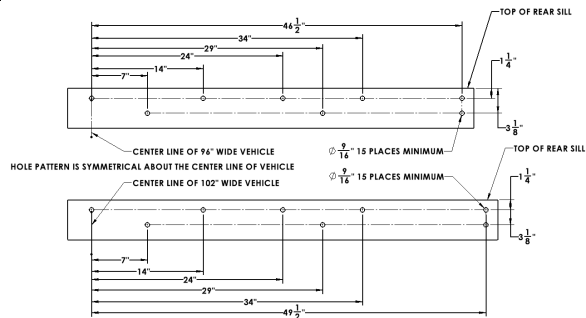
INSTALLATION OF BED EXTENSION

There are two methods of installing the bed extension, welding and bolting.

IF BOLTING:

If bed extension is to be bolted on, use pattern at right for drilling holes.

Thirteen (13) 9/16" diameter holes required



GR10149

Chapter 4

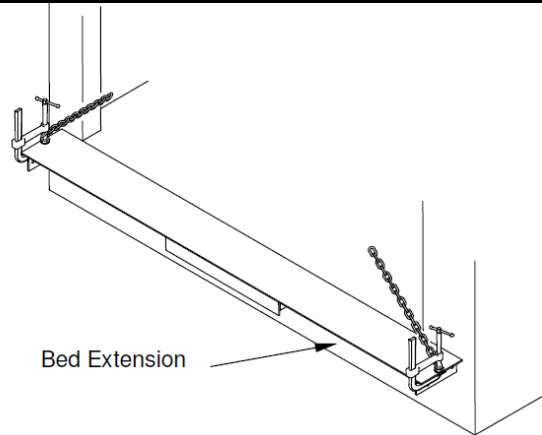
Installation

Position Bed Extension up to rear sill using a forklift or crane.

Make certain bed extension is centered on vehicle body and level with bed.



Other means may be used to support Bed Extension in position. ALWAYS verify the safety of your supporting method before proceeding.



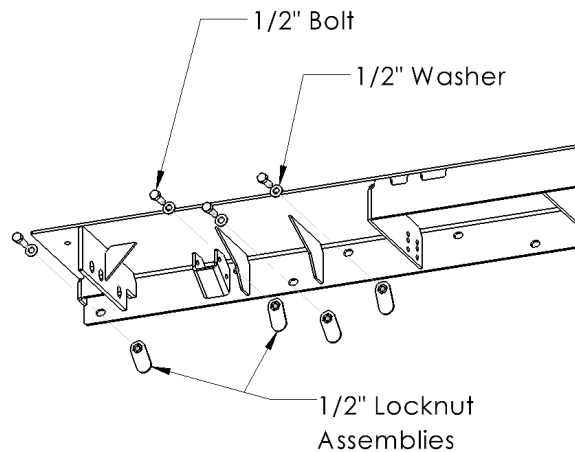
GR02647

IF BOLTING:

Bed extension to sill, use thirteen (13) 1/2" bolts, nuts and washers provided with kit. Torque bolts to 90 ft. lbs.

NOTE:

If corner posts of vehicle body extend beyond rear sill of body, shims may be added behind bed extension to prevent bowing of bed extension.



GR10158

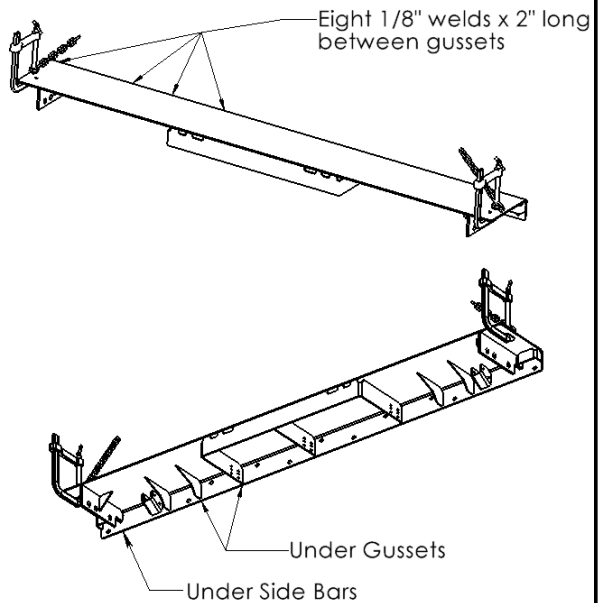
Chapter 4

Installation

IF WELDING:

Weld top side of bed extension, 1/8" x 2" welds over each of the supports on underside of extension.

Weld under the side bars and all gussets with 1/8" weld x 2" long.



GR10159

Remove liftgate from shipping pallet, and all banding. Do not unfold platform until instructed to do so.

STOP! Before proceeding; verify vehicle bed height and A-dimension to be used!

Refer to Chapter 3 of this manual.

NOTE:

If mounting to 26-1/2" A-Dimension, the Mounting Bars will need to be removed before proceeding.

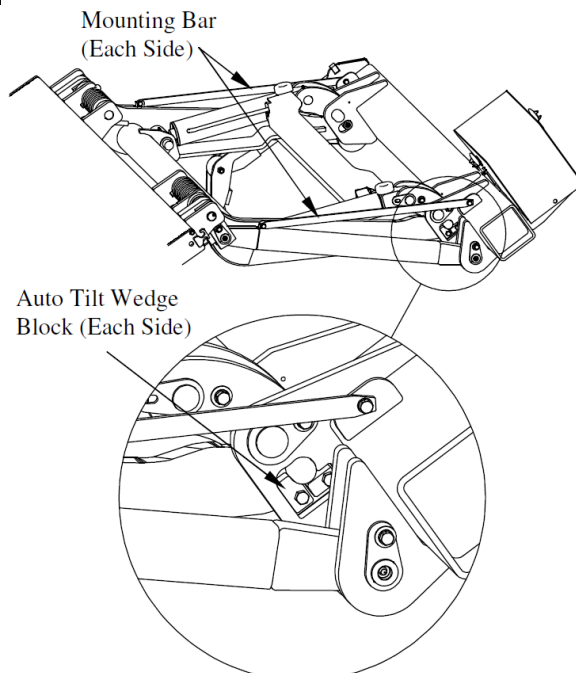
Do not remove the Auto Tilt Wedge Blocks.

Mount Bars are set for 25-1/2" A-Dimension when shipped from factory.

NOTE:

Do not remove Mounting Bars until instructed to do so.

Unfold platform to open position.



GR02785

Chapter 4

Installation

Position liftgate up under vehicle.

Using a forklift or crane, raise platform up to bed extension.

Ensure 3/16" coil pins are between platform and bed extension skins.

Platform to be centered on vehicle, and level with floor (bed) of vehicle.

A jack can be used to help position mount tube to proper A-Dimension.

Be sure platform is centered on vehicle body and bed extension.

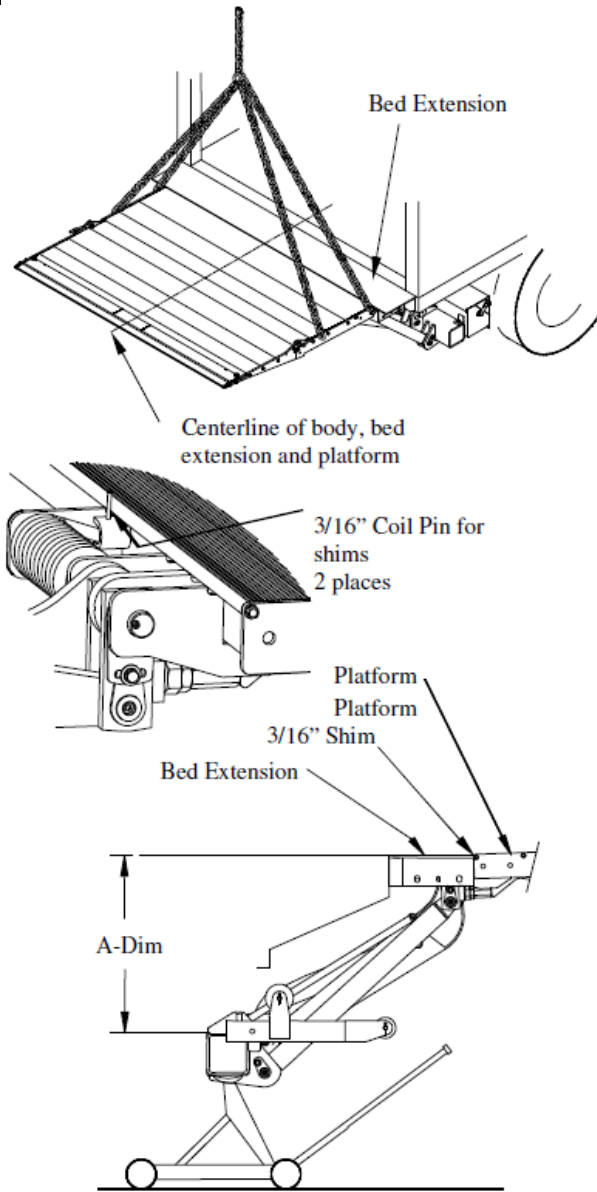


Other means may be used to support Liftgate in position. ALWAYS verify the safety of your supporting method before proceeding.

Position platform so it is level with vehicle body, and verify proper A-Dimension.

NOTE:

If unable to obtain correct A-Dimension with platform level, it may be necessary to screw in the Platform Adjustment Bolts as shown below. Platform and Mount Tube should be level.



GR02786, GR027887, GR02937

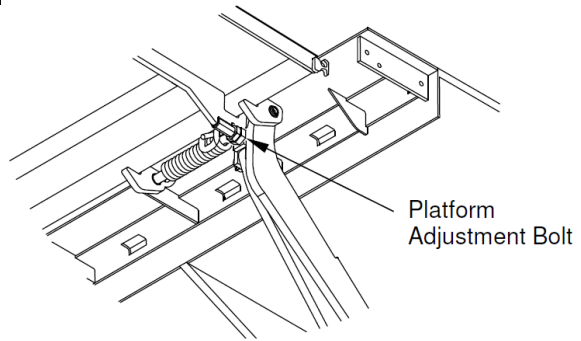
Chapter 4 Installation

Bolts heads should be contacting platform hinges, if they are not, ensure the platform and mount tube are parallel prior to adjusting.

NOTE:
Platform springs are engaged and under tension.



Take care when adjusting liftgate.



GR02660

With the platform centered and level with the bed extension, secure it so that it cannot move.

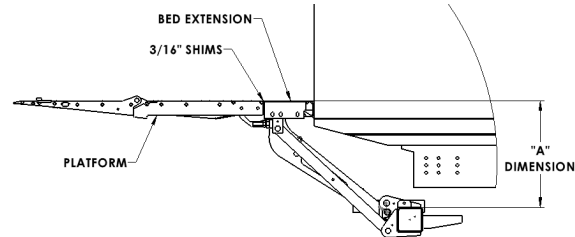


ALWAYS verify the safety of your supporting method before proceeding any further.

IMPORTANT:

Verify mount tube is at correct A-Dimension before proceeding to next step:

- Correct A-Dimension for bed height
- If using 26-1/2" A-Dimension and no mounting bar, square up mount tube with ground by temporarily powering the gate to obtain the correct A-Dimension.



GR10151

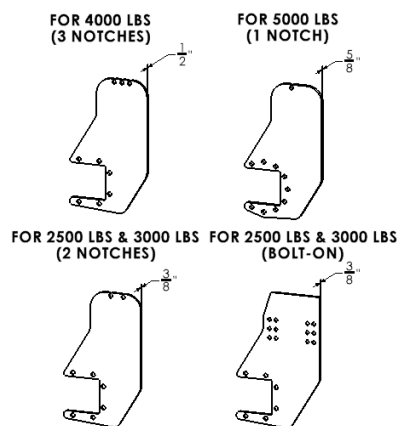
CONFIRM PROPER MOUNT PLATE



Higher capacity liftgates (4000# & 5000#) must use 5/8" Mount Plate

Confirm the capacity and mount plate profiles match the picture to the right.

Contact Waltco immediately if you have a high capacity liftgate with the wrong mount plate.



GR10150

Chapter 4

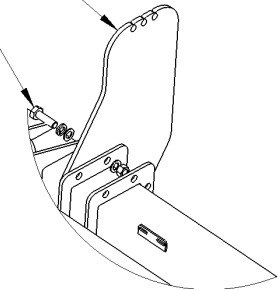
Installation

FOR WELD-ON MOUNT PLATE INSTALLATION

Align mount plates with outside of brackets on mount tube. Loosely install all of the $\phi 3/4$ " hardware with the bolt head on the outside to hold mount plate in position.

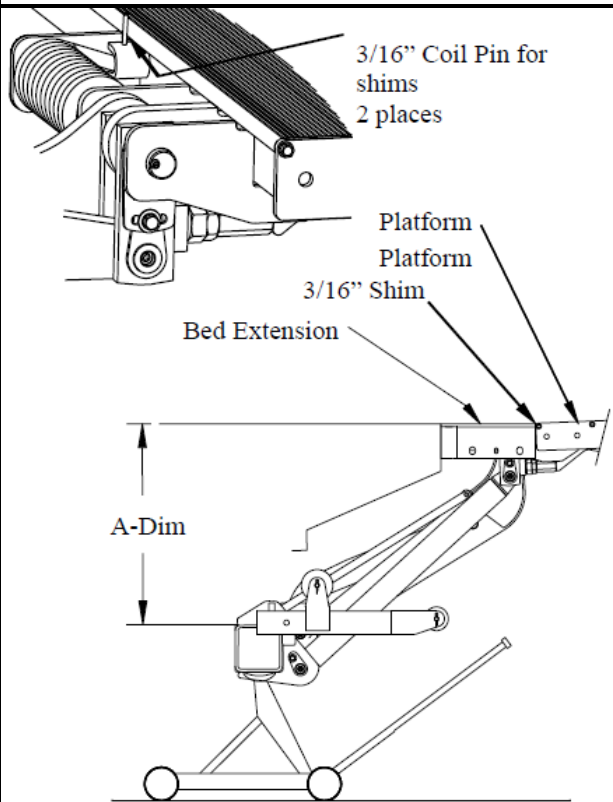
Mount plate to be on outside of brackets.

$\phi 3/4$ " Hardware Bolt head to be on the outside too.



GR02907

With mount plates loosely attached, the platform level with the bed extension and the $3/16$ " coil pin spacers in place, raise the mount tube up to the correct A dimension.



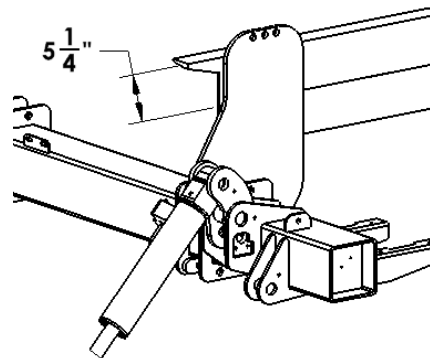
GR02787 & GR02937

Mount plates should be approximately 90° to vehicle frame.

Check that you can weld $5-1/4$ " of vertical weld to both sides of mount plates. If dimension cannot be held, refer to optional installation.



Shield all wires and hoses from heat and weld splatter.



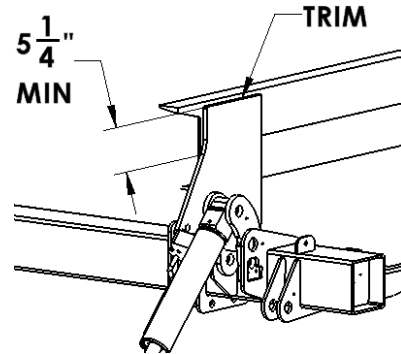
GR10152

Chapter 4

Installation

NOTE:

Top of mount plate may be trimmed off if necessary to weld three (3) sides to vehicle frame. The 5-1/4" minimum dimension must be held.



GR10153

OPTIONAL INSTALLATION

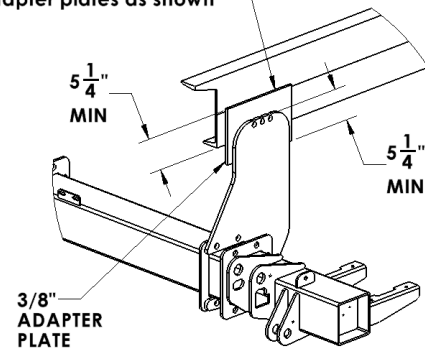
If the 5-1/4" dimension cannot be met, a 3/8" thick plate must be added.



Shield all wires and hoses from heat and weld splatter.

Recheck "A" dimension. Weld three sides of mount plates and three sides of 3/8" plate 100% with 3/8" welds.

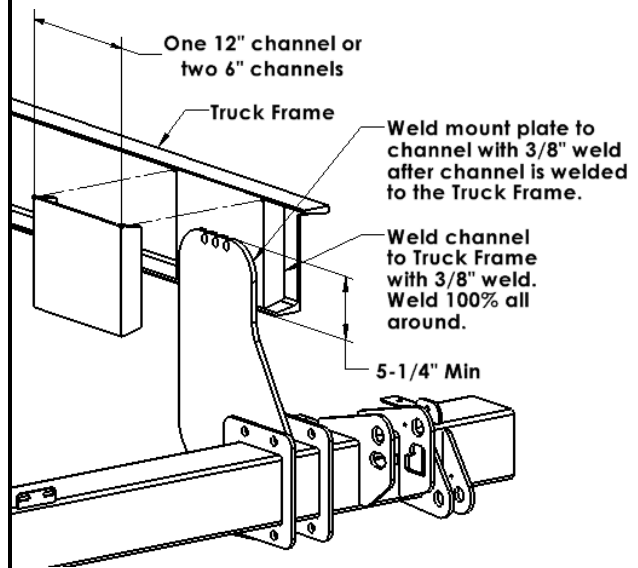
3/8" weld 100%, three sides of mount plate and adapter plates as shown



GR10154

NOTE:

If necessary, liftgate may be mounted to inside of frame as shown.



GR10155

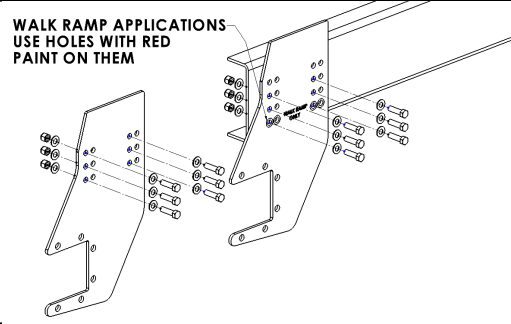
HLF-30 Bolt-on Mount Plate Instructions

80101776

Install six 5/8-18 Grade 8 bolts, lock nuts and washers per mount plate as shown.

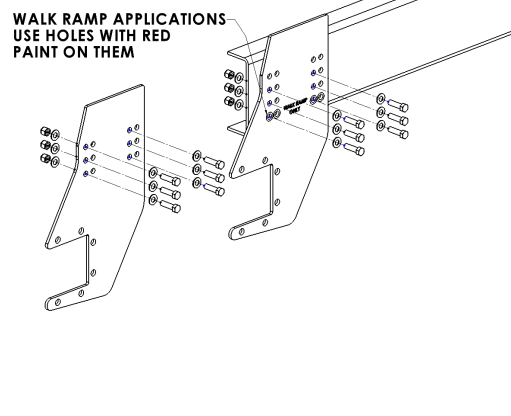
The two columns of bolts MUST be 7-1/2" on center.

Do not completely tighten bolts.

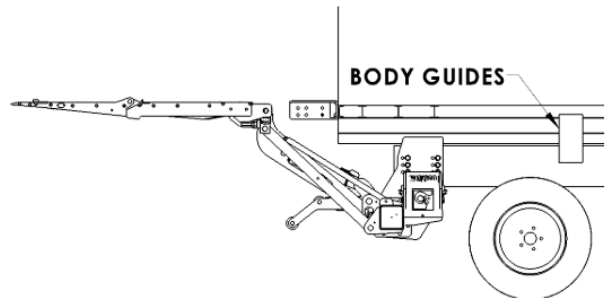


Make sure **INSTALL BARS** and the **INSTALL BLOCKS** are still in place.

With unsupported liftgate bolted to mount plates, tighten 5/8" bolts to 185 ft-lbs.



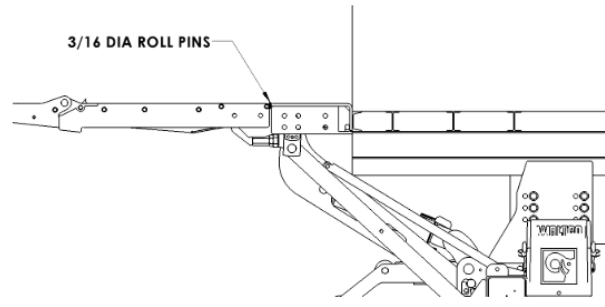
Make sure **INSTALL BARS** and the **INSTALL BLOCKS** are still in place when aligning body to chassis. With the liftgate completely bolted to the chassis, and the bed extension attached to the body, lower the body enough so the body guides straddle the chassis frame rails but the long members are not contacting the chassis rails.



Slide body backwards until the bed extension contacts the 3/16" diameter roll pins in the platform.

Finish lowering the body onto the chassis rails.

Secure body to chassis and remove liftgate install bars and install blocks.



Rev 02 EO11037

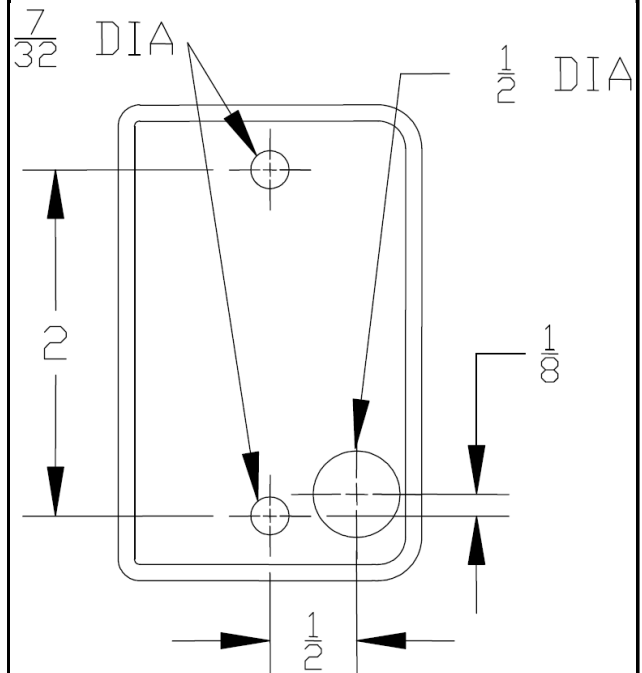
Chapter 4

Installation

INSTALLATION OF CONTROLS

Locate switch such that, when operating liftgate, operator will have clear view of entire platform area and will not be in area that liftgate will pass through.

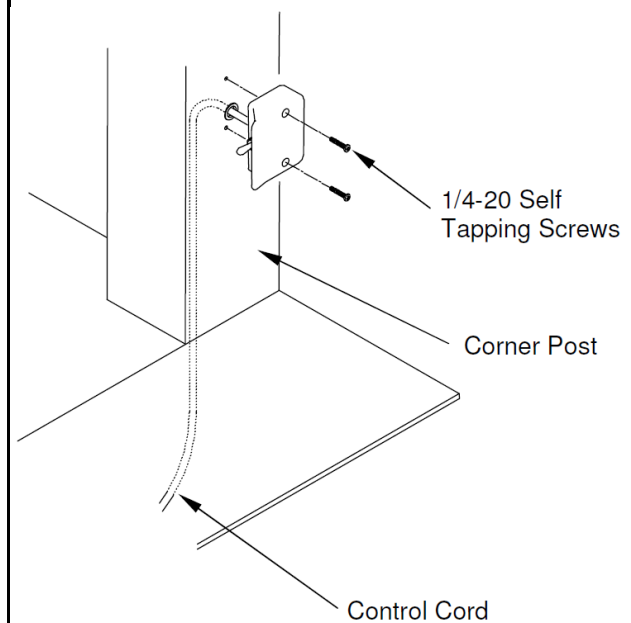
Use this template to locate screw holes, and hole for control cord.



GR02662

If Control Cord will be run through a hole of body, remove all sharp edges from hole.

Use 1/4" Self-tapping Screws to secure switch.



GR02761

Chapter 4

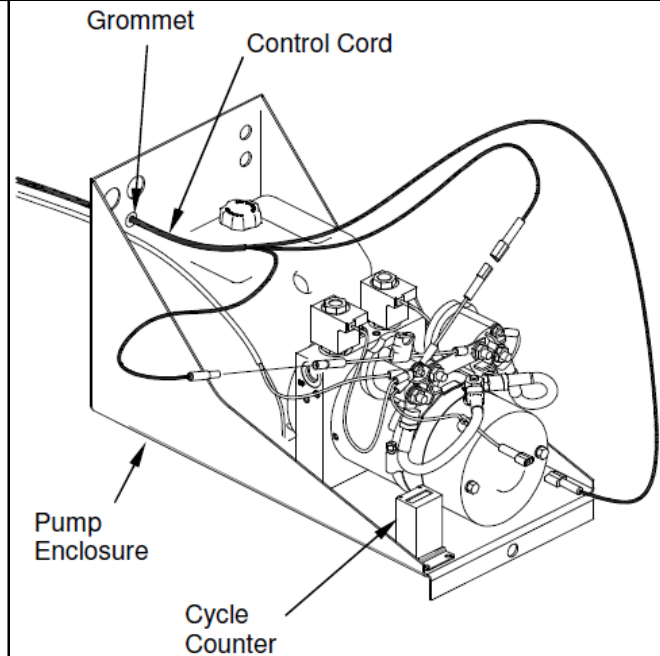
Installation

Route control cord into pump enclosure, using grommet supplied.

Hints:

With grommet loose, insert largest terminal of control cord through the grommet first, then the others. Apply a drop or two of oil on grommet to help insert terminals through grommet, and to install grommet into pump enclosure.

Connect control cord to pump unit as shown. Terminals are gendered to allow only correct connections. Also see schematic on following pages.



Note: Some components not shown for clarity.

GR02766

INSTALLING BATTERY CABLES

Route both power and ground cables into pump enclosure using grommets as shown.

Note: The power cable might have red ends, ground cable is all black.

Power cable is bolted to either one of the solenoids and copper bus bar.

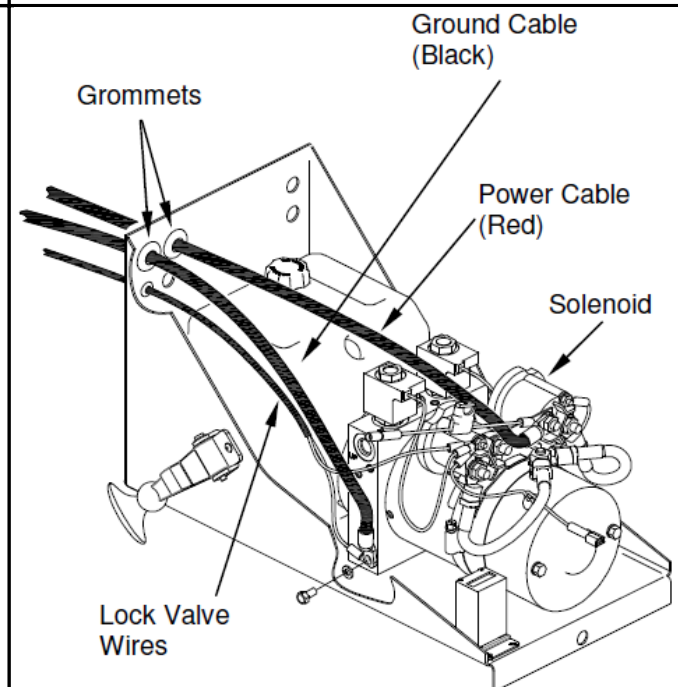
Ground cable is bolted to pump unit side, with Lock Valve ground wire.

Route power and ground cables along truck chassis, towards truck batteries, securing them every 24" with cable ties provided.

Do not connect any cables to batteries at this time.



Be certain cables are protected with grommets when passing through metal holes or over sharp edges.



Note: Some components not shown for clarity.

GR02765

Chapter 4

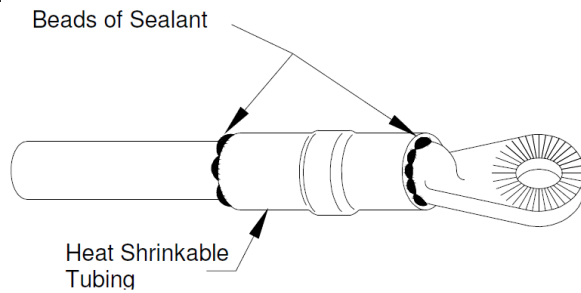
Installation

INSTALLATION OF POWER CABLES

Route battery cables to battery compartment using cable ties to secure cables to the vehicle.

Cut battery cables to proper length and install terminal connector per UL standards for 2 AWG cable.

Position the red heat shrink tubing over the terminal end of cable and shrink tubing with electric heat gun.



GR00301

These instructions are for connecting to truck batteries only. Refer to auxiliary battery instructions in back of this manual.

Locate and mount circuit breaker directly to batteries using copper terminal link supplied.

Circuit breaker must be mounted to give good protection against any objects coming into contact with circuit breaker terminals and causing a short. Position must also be readily accessible to reset breaker.

NOTE:

Circuit Breaker is to rest solidly on battery to prevent vibration during transit.

If unable to connect circuit breaker direct to batteries, an optional jumper cable can be made from excessive length of power cable, see instructions above for installing terminal lugs.

Connect power cable (positive) from liftgate to circuit breaker. Then connect ground cable to negative terminal on batteries.

Apply a generous amount of Dielectric Grease to all Battery terminals and Circuit Breaker terminals.



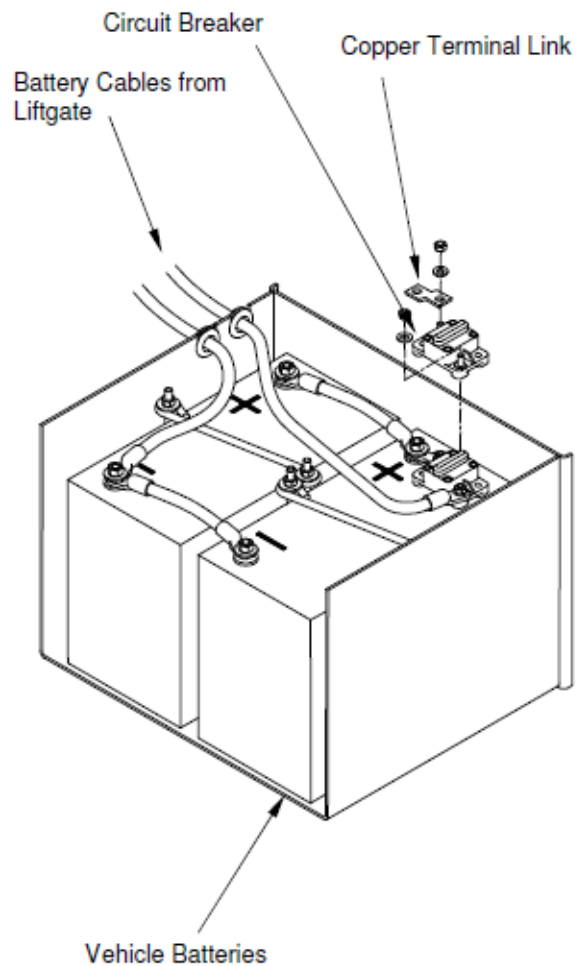
Protect wires from any sharp edges or holes that may abrade insulated covering of wires.



Secure battery cable so it does not come near, or in contact with, other vehicle wiring, fuel lines, brake lines, air hoses, exhaust system, etc.

IMPORTANT:

DO NOT operate liftgate until Mounting Bar has been removed.

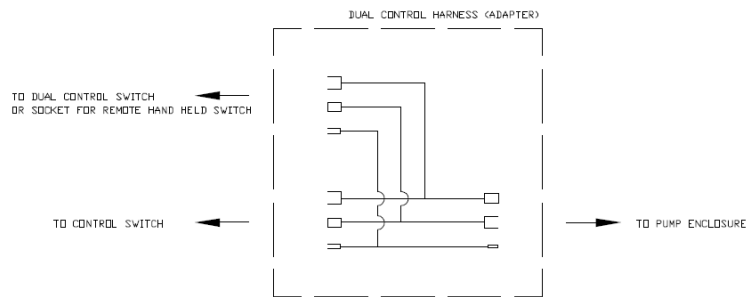
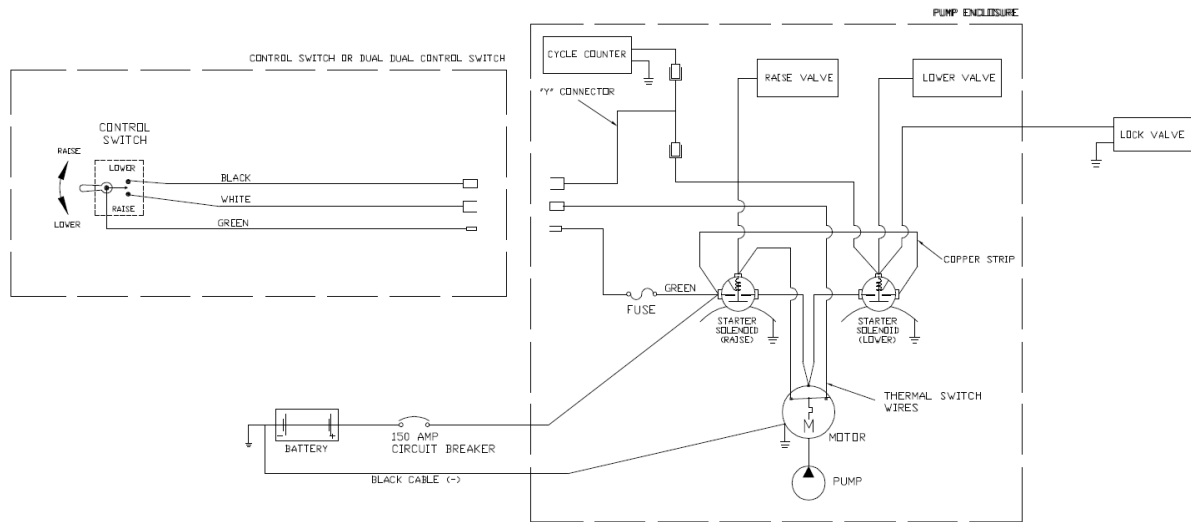


GR02764

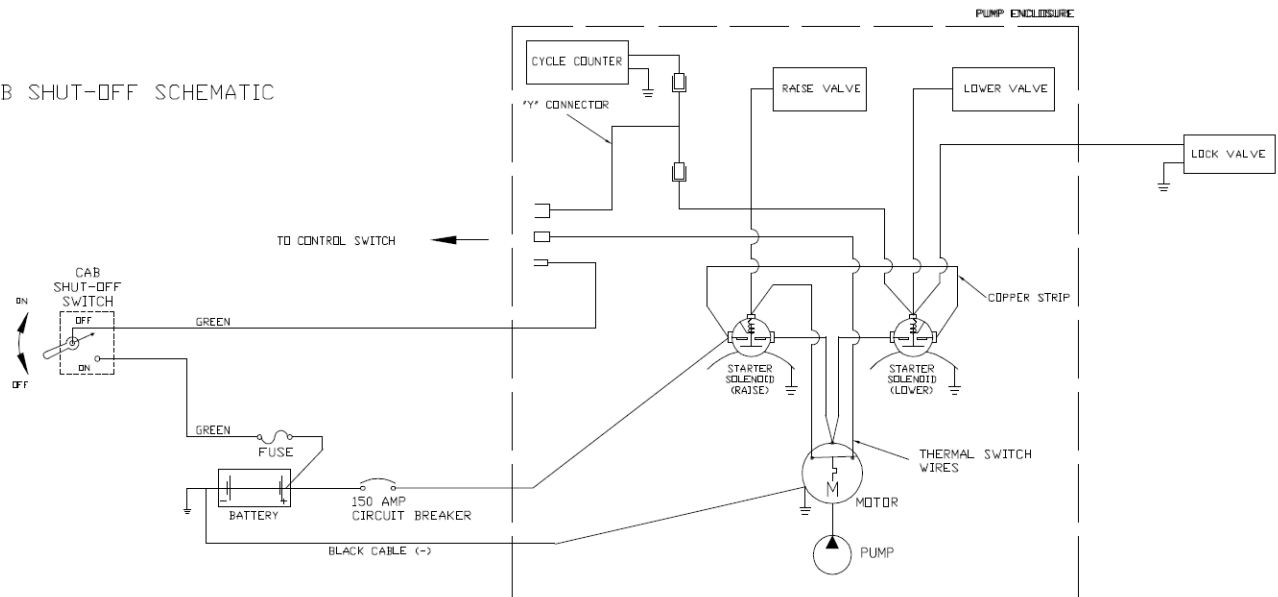
Chapter 4

Installation

Electrical Schematics



CAB SHUT-OFF SCHEMATIC

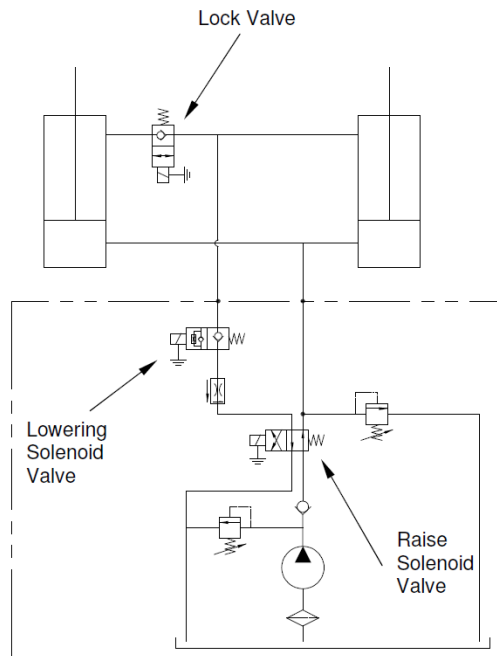


GR02798

Chapter 4

Installation

Hydraulic Schematic

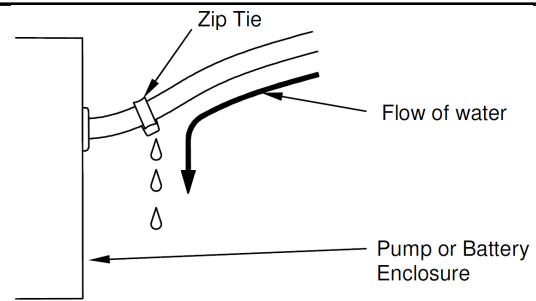


GR02797

DIVERT WATER FROM ENCLOSURE

To help prevent channeling water into pump or battery enclosures:

- Secure hoses, cables and cords downward as they exit the enclosure.
- If a downward exit is impractical, a Zip Tie can be installed around hose or cable to help interrupt the flow of water as shown.



GR02460

Chapter 4

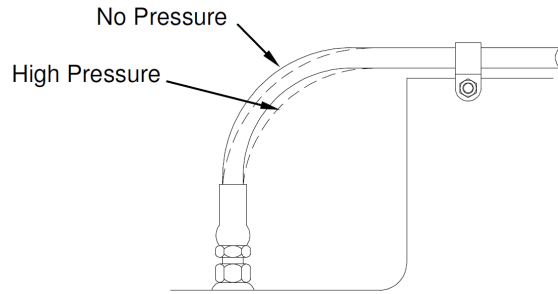
Installation

HOSE INSTALLATION

Avoid twisting of hoses.

Hoses will contract under pressure. Allow plenty of slack between connecting points.

Do not clamp hoses at bends to allow for length changes when hose is pressurized.



GR00717

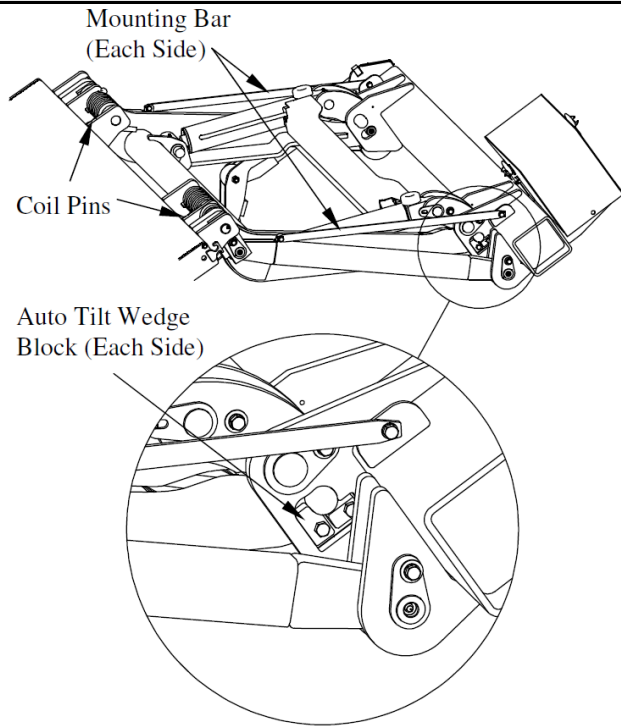
REMOVE MOUNTING BAR, WEDGE BLOCKS, AND 3/16" COIL PIN SHIMS

Insure platform is properly supported before disconnecting the Mounting Bars and Wedge Blocks.



Do not be under platform or lift arms when disconnecting the Mounting Bar. Access bar from forward side of mount tube.

Remove two 3/16" coil pins from platform at spring retainer.



GR02785

Chapter 4

Installation

FILLING HYDRAULIC RESERVOIR

Position liftgate deck into raise position (use forklift, crane, or other safe device if necessary).

Remove Reservoir Plug.

Oil level should be 1/2" from top of reservoir in raised position.

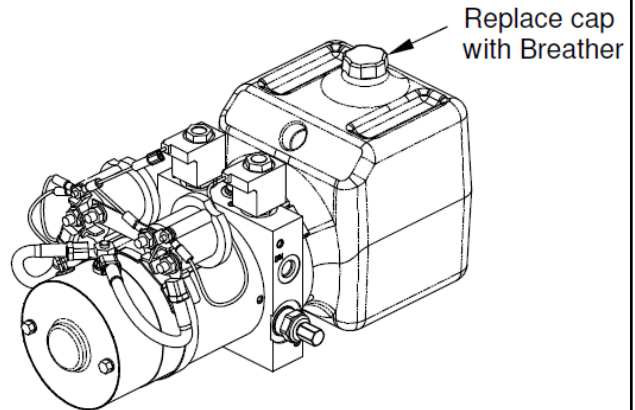
If low, fill as required.

Replace Plug with Breather.

Run liftgate full cycle several times to release trapped air from system.

NOTE:

The hydraulic system was bled of air at the factory. If however any hydraulic components, such as hoses, fittings, cylinders or pump were removed and replaced or disconnected during installation, or you suspect there is air in the system, the system should be bled per the instructions at the end of this section.



GR02792

Recommended Fluids	
Temperature Range	Acceptable Fluids
0° to 120° F	Waltco Biodegradable Liftlube™ part #85803860
	Shell Tellus S2 V 32
	Chevron Rando HDZ 32
-20° to 90° F	Waltco Biodegradable LiftLube Arctic part #85803866
	Waltco All Season Hyd Oil Part 85803867
	Shell Tellus S2 V 15
	Mobil DTE 10 Excell 15

A good quality SAE 10W motor oil may also be used in temperatures above 32° F.

Fill reservoir

- Fill with recommended fluid or equivalent.
- Fill the reservoir to within 1/2" from the top.
- Fluids are available from the Waltco parts Dept. 1-800-411-5685 www.waltco.com

NOTE:

Do not use the following fluids:

- Brake Fluid
- Power steering fluid
- Automatic Transmission Fluid (ATF)

Chapter 4

Installation

There is no speed adjustment on this liftgate.

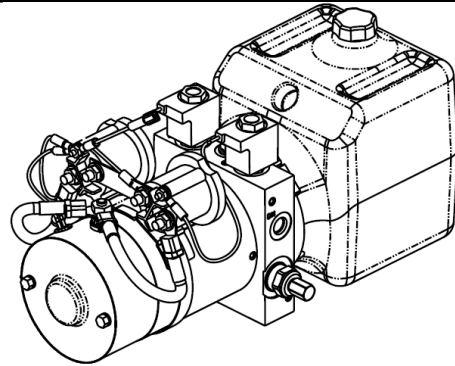
Lowering speed is controlled by the pressure compensative valve plumbed into the pump.

Regardless of weight on platform, liftgate should lower at approximately six (6) inches per second.

$$\frac{\text{Bed Height (inches)}}{6} = \text{Lowering Time (seconds)}$$



This liftgate must have the pressure compensative valve installed in the pump.



Pressure Compensative Flow Control Valve inside Pump

GR02792

INSTALLATION OF PARTING BAR

The parting bar assists in opening the platform.

Determine position of parting bar:

Without walk ramp:

Position parting bar so that three of the six holes on the parting mount tube are visible.

With walk ramp:

Position parting bar so that none of the holes on the parting mount tube are visible.

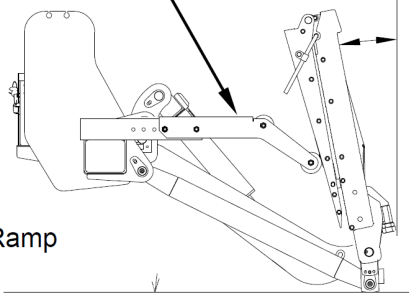
Install parting bar using two 1/2-13x2-3/4" hex bolts provided.

Tighten nuts and bolts to 50 ft lbs.



Platform is to lean in towards parting bar when at ground. It is not to fall open to ground.

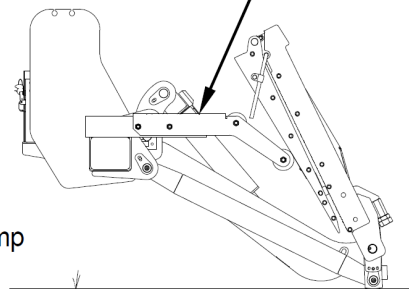
Parting Bar positioned as needed



2 to 18 Degrees of Lean

No Walk Ramp

Parting Bar positioned All way forward



Walk Ramp

GR02900

Chapter 4

Installation

ADJUST PLATFORM TILT

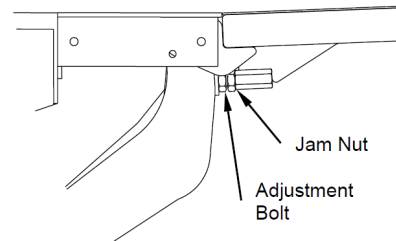
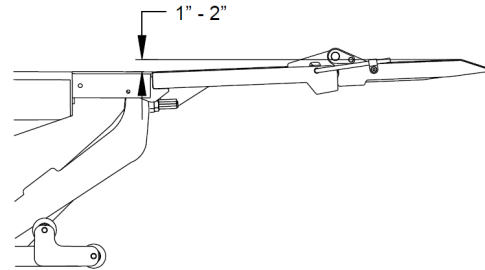
Adjust bolts between Stop Block and Platform Hinge to achieve 1" - 2" tilt up of platform as shown. A greater tilt up is recommended for higher capacities.

NOTE:

Adjust both Stop Block Bolts evenly.
Tighten Jam Nuts.

NOTE:

Tack weld Jam Nut to Adjustment Bolt when adjusting is completed.



GR02668, GR02690

Chapter 4

Installation

OPTIONAL RUBBER SNUBBER INSTALLATION

Note: Rubber snubbers are NOT required to hold the gate during transit but are available as an optional feature when desired.

Raise platform up 1-1/2" below the bed extension as shown.

Note:

Take care not to fully raise platform so as to contact chassis frame and damage paint on platform.

Locate Rubber Snubber flat against deck tube or against the aluminum extrusion as shown.

Weld one Snubber in place and check operation:

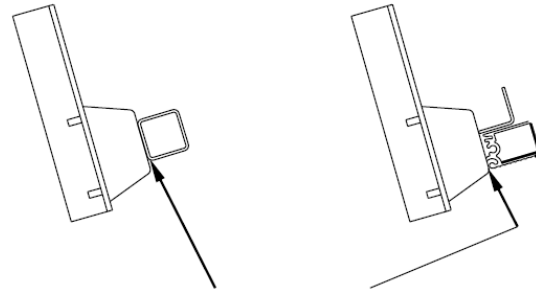
- Check that snubber holds platform tight.
- Check that platform clears snubber while opening.

Weld second snubber on opposite side of chassis frame.

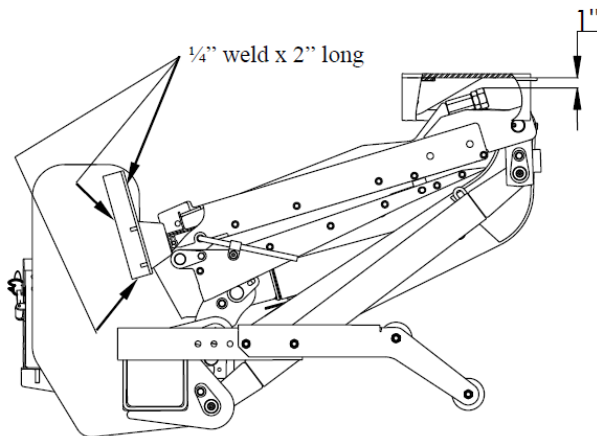
Note:

Weld snubbers to mount plate or chassis frame as required. Steel angle of snubber may be trimmed as needed.

After installing parting bar and snubbers, carefully run liftgate up to stored position and verify platform clears the chassis frame cutout (see beginning of this chapter).



Locate snubber flat against platform cross tube or against the aluminum extrusion as shown



GR02793

Chapter 4

Installation

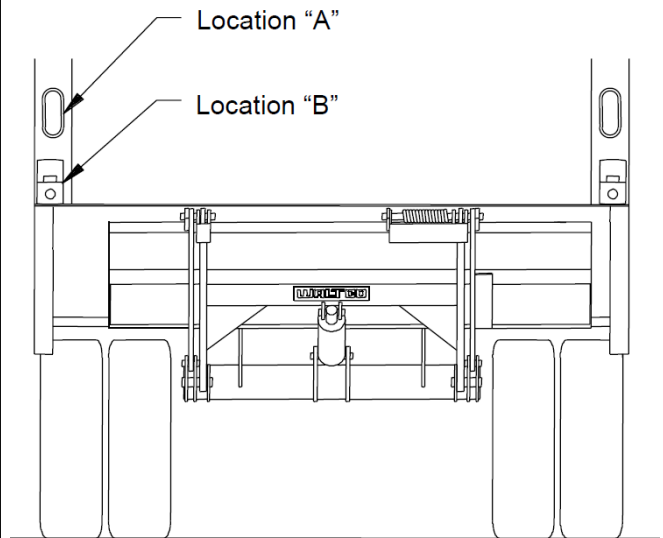
Waltco offers two suggestions for the installation of the vehicle taillights. We believe these suggested locations meet D.O.T. regulations but do not warrant that they do. Your installation of the vehicle taillights should meet all applicable regulations and requirements. This is in no way to infer that these suggestions are the only correct method of installing taillights.

Mount lights above bed extension and into the rear corner post.

Waltco also offers dock bumpers with lights pre-installed.

IMPORTANT:

All lights must be installed in accordance with all applicable D.O.T. regulations.



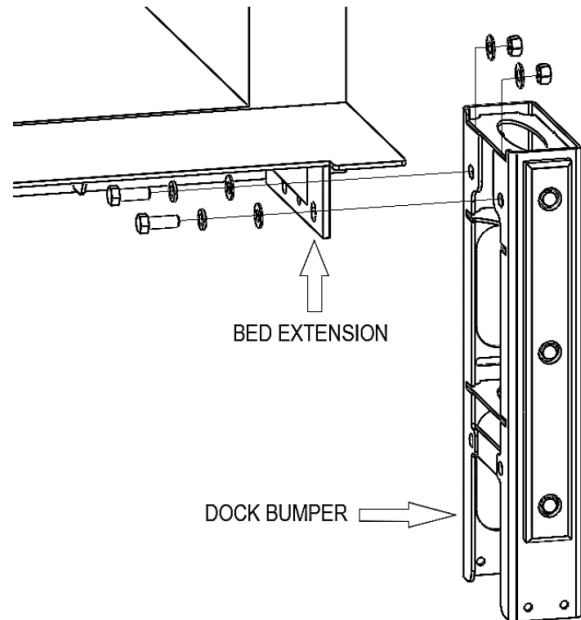
GR02762

INSTALL DOCK BUMPERS (Non-Walkramp units, 2 bolts)

Bolt bumpers to bed extension using four 5/8" bolts, nuts, washers per side.

Torque bolts to 167-179 ft. lbs.

For walk ramp ready units, see pages 50-54 for additional Dock Bumper and Bed Extension installation instructions.



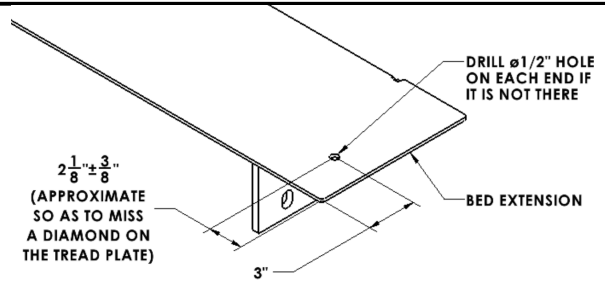
Dock Bumper Top Bolt Installation

80101736

If bed extension does not have holes on top tread plate, then add half inch holes as shown.

2-1/8" ± 3/8" dimension is approximate, so that hole center is 7/16" away from a diamond edge.

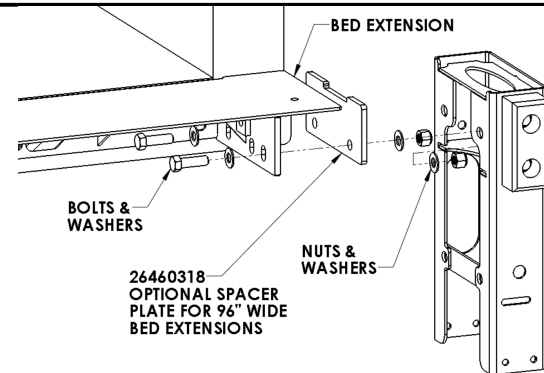
If you cannot avoid diamonds, grind them off.



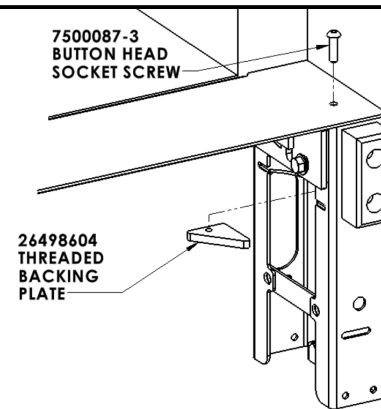
INSTALL DOCK BUMPERS

Bolt bumpers to bed extension using four 5/8" bolts, washers and nuts.

Torque bolts to 167-179 ft lbs.



Bolt bumper through top of bed extension with button head socket cap screw and backing plate by holding backing plate inside of bumper.



Chapter 4

Installation

INSTALL BRACES

Bolt brace and support angles as shown.

Support angle to span a minimum of 3 or 4 crossmembers.

Note:

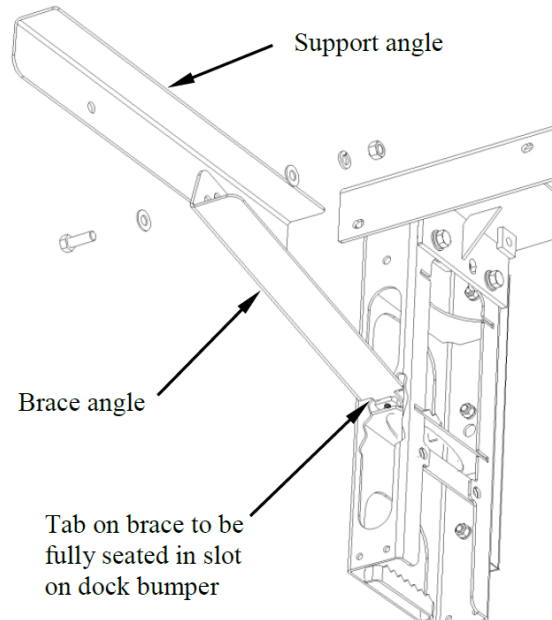
It may be necessary to trim rearward end of support angles to clear rear sill and/or dock bumper.

Weld support angles to all crossmembers it contacts with minimum four (4) inches of 3/16" weld total.

Insert brace angle into dock bumper then install 3/8" bolt and nut into brace angle. Attach brace angle to support angle with 5/8" bolts before tightening 3/8" bolt.

Torque 5/8" bolts to 167-179 ft. lbs.

Torque 3/8" bolts to 39-47 ft. lbs.



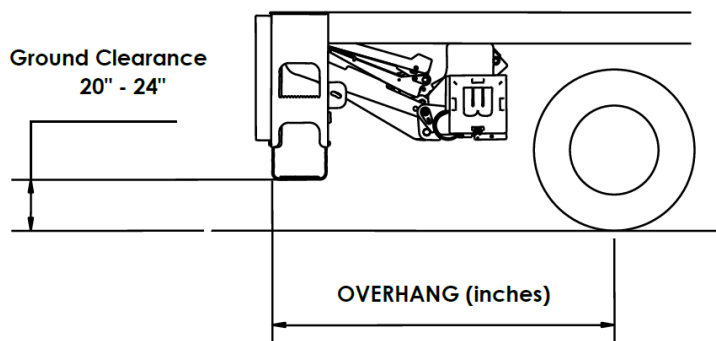
After installation of dock bumpers, ground clearance needs to be considered. If dock bumper steps are too low, they may hit the ground when driving in or out of driveways, etc.

Adjust dock bumper steps to achieve recommended ground clearance of 20" – 24" as shown below.

Note: Overhangs greater than 11 feet may need dock bumper steps set higher to maintain a 10° departure angle.

Use formula below to calculate ground clearance.

Bed heights below 46" may require the lower step to be completely removed to achieve sufficient ground clearance.



Calculate Ground Clearance for 10° departure angle:
Ground Clearance = Overhang x .176

GR02896

Chapter 4

Installation

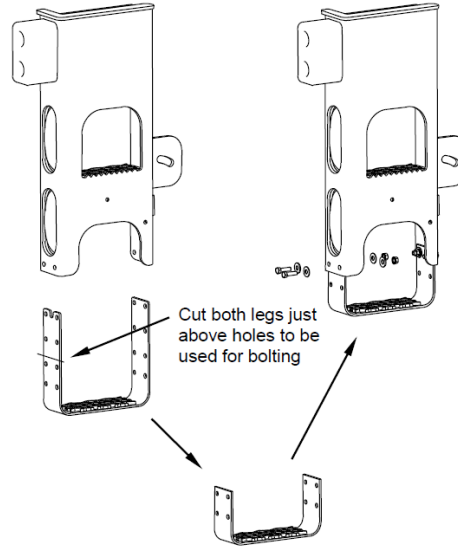
STEP ADJUSTMENT

Steps for non-light dock bumpers can be lowered by simply unbolting and lowering to desired setting.

For dock bumpers with lights, it will be necessary to install steps.

- 1 Determine correct step height per above recommendations.
- 2 Identify hole set required for bolting into position.
- 3 Cut off step legs just above hole set required.
- 4 Bolt into position as shown.

Torque bolts to 34-37 ft. lbs.



GR02744

Chapter 5

Placement of Decals

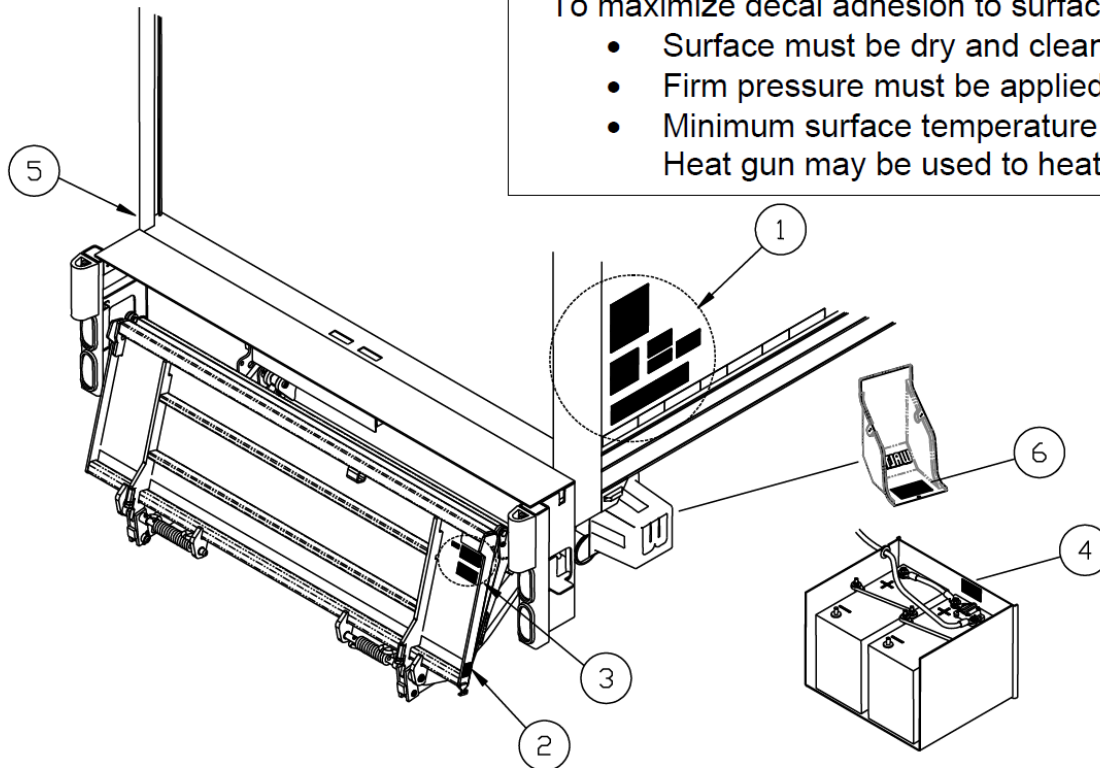


All decals must be in place and legible or all warranties are void.

ITEM	DECAL	QTY	PART NO.	LOCATION
1	Safety Instructions	1	80100850	Locate in a conspicuous place near controls. If your liftgate is equipped with dual controls, an additional Safety Instruction decal (80100850) is to be placed in a conspicuous place near the second set of controls. Refer to the following diagram showing decal locations.
	Operation Decal	1	801016646	
	Hazard Decal	1	80101370	
	Important Decal	1	80100828	
	Motor Thermal Switch Decal	1	80101480	
	Stand Clear Decal	1	75089296	
2	Capacity Decal- 2500lbs	1	80100255	Locate on curbside of platform (Position so as to be read when platform is open)
	Capacity Decal- 3000lbs	1	80100257	
	Capacity Decal- 4000lbs	1	80100260	
	Capacity Decal- 5000lbs	1	80100263	
3	Use Handle Decal	1	75089295	Locate near platform handle (Positioned so as to be read when platform is being unfolded into loading position)
	Stand Clear Decal	1	75089296	
	Capacity Decal- 2500lbs	1	80100255	
	Capacity Decal- 3000lbs	1	80100257	
	Capacity Decal- 4000lbs	1	80100260	
	Capacity Decal- 5000lbs	1	80100263	
4	Circuit Breaker Decal	1	80100829	Locate next to liftgate circuit breaker. In applications where more than one circuit breaker is used, this decal must be placed in both locations
5	Stand Clear Decal	1	75089296	Locate on driver's side of vehicle body near liftgate
6	Schematics Decal	1	80101622	Locate inside of pump box cover

To maximize decal adhesion to surfaces:

- Surface must be dry and clean
- Firm pressure must be applied to decal
- Minimum surface temperature 65°
Heat gun may be used to heat surface



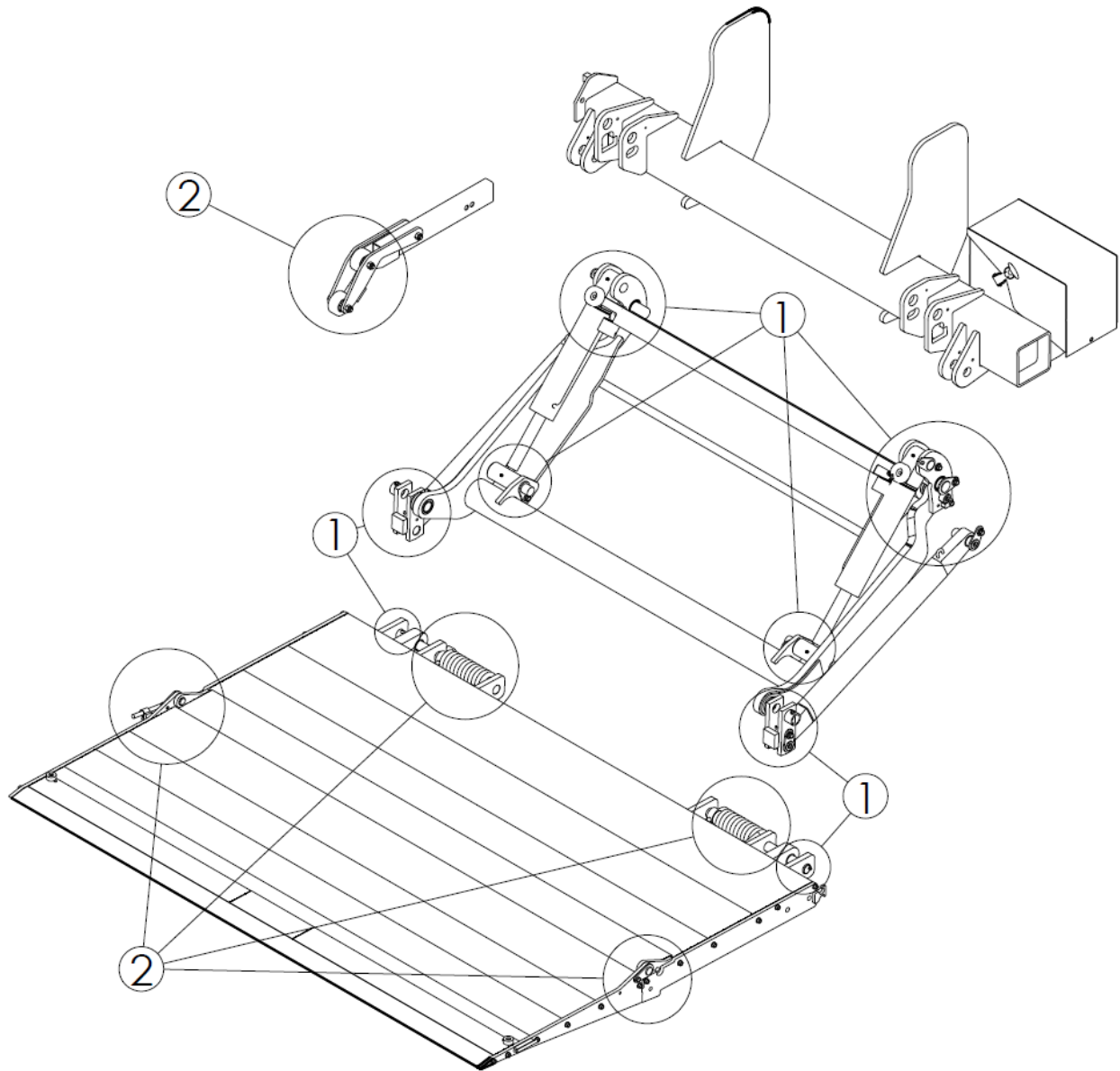
GR03007

Chapter 6 Lubrication Instructions

The liftgate should be lubricated every 120 days.

#1 – Grease all grease fittings in pins and cylinders with grease gun.

#2 - Oil with a light weight machine oil (do not use on bearings in platform).



GR02794

Chapter 7 FINAL INSPECTION SHEET

IMPORTANT:

All of the following are to be checked and verified before installation is complete.

- A. Are all pivot pins secured with retaining bolt and lock washer?
- B. Are all roll pins securely in place?
- C. Does liftgate fold and unfold properly?
- D. Does the platform meet the vehicle properly?
- E. Do controls operate properly?
- F. Are bed extension, mount frame, mount plates, dock bumpers, bumper braces, taillight guards and taillights all finish welded?
- G. Are hydraulic hoses and fittings properly connected with no leaks?
- H. Are battery cables attached and clamped tight?
- I. Is circuit breaker installed at battery?
- J. Are all electrical connections coated with dielectric grease?
- K. Hydraulic system is free of air?
- L. Is pump reservoir full of oil and capped with breather plug?
- M. Are all parts properly lubricated according to the lubrication instructions?
- N. Do lights operate properly (Note: Lights must be installed in accordance with all applicable state and federal D.O.T. regulations)
- O. Is license plate properly installed?
- P. Are all decals properly in place and legible according to the decal placement drawings?
- Q. Is pump cover installed and securely latched?
- R. Is the owner's manual in the vehicle?
- S. Are 3/16" coil pin shims removed from platform?
- T. Does cycle counter add a cycle each time lower switch is activated and held on for 4 seconds or longer?

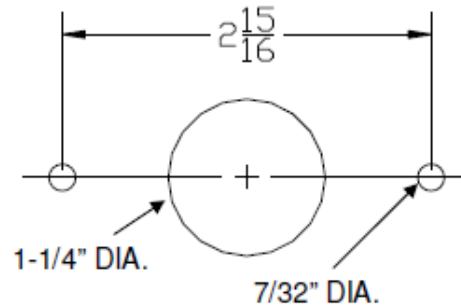
WARNING:

Do not use liftgate if any of the above are not checked and verified. If you have any questions not covered in this manual, contact your nearest Waltco distributor, or the nearest Waltco factory.

Hand Held Remote Installation

DRILL SOCKET HOLES

Using dimension shown, drill mounting holes in desired location for socket.



GR00036

INSTALL SOCKET

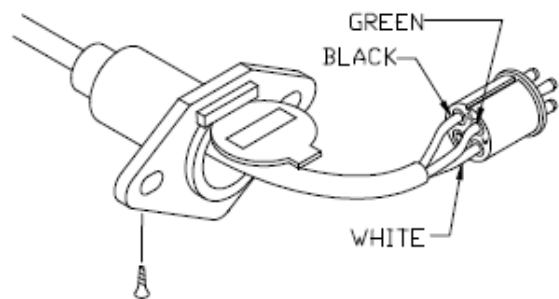
Assemble socket as shown.

Install wires according to colors:

W = White (Raise)

B or BK = Black (Lower)

G = Green (Power)



GR02240

CONNECT WIRES TO PUMP UNIT

Route Control Cord into pump enclosure.

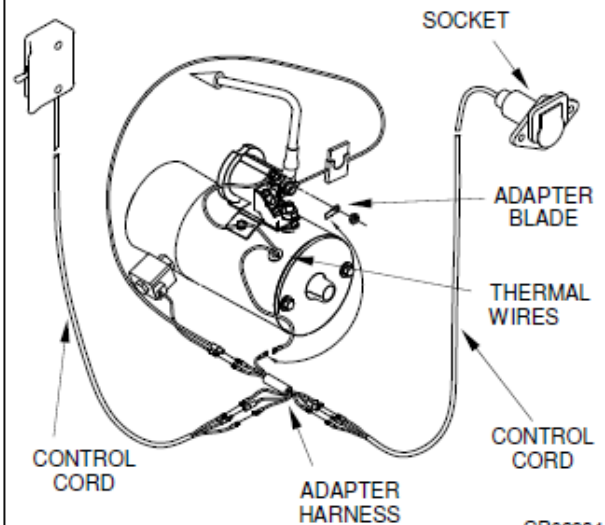
First connect Pump wires to Dual Control Adapter Harness as shown.

Connect both Control Cords to other ends of Adapter Harness as shown.

Note!

Match wire connections male to female. Color of wire may vary.

If motor does not have Thermal Wires, plug Adapter Harness into Adapter Blade.



GR02934

80101485

EO7820 Rev.06

80101485

EO7820 Rev. 06

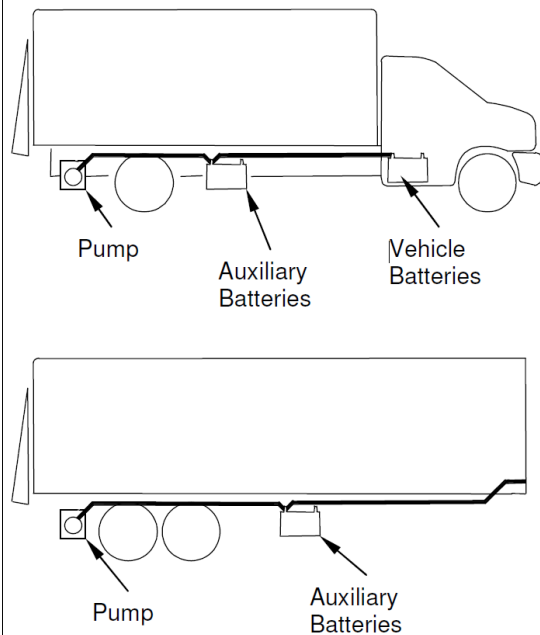
Auxiliary Battery kit w/Dual Cables

DETERMINE BATTERY LOCATION AND CABLE ROUTING

Determine where auxiliary battery box will be mounted on the vehicle.

For trucks, your installation will use cables supplied with liftgate.

For trailers, additional cables are supplied with the trailer kit.

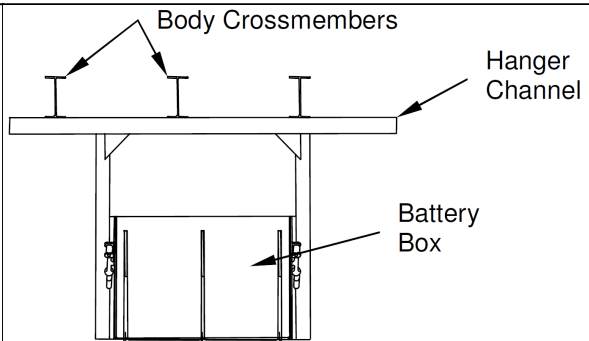


GR02768

Locate battery box in a suitable location under the vehicle body.

Weld hanger channel to body crossmembers.

Install batteries into box.



GR02769

Install power and ground cables to liftgate pump unit per liftgate instructions.

Route cables along chassis frame towards auxiliary battery box, securing them every 24" with cable ties provided.

Do not connect any cables to batteries at this time.



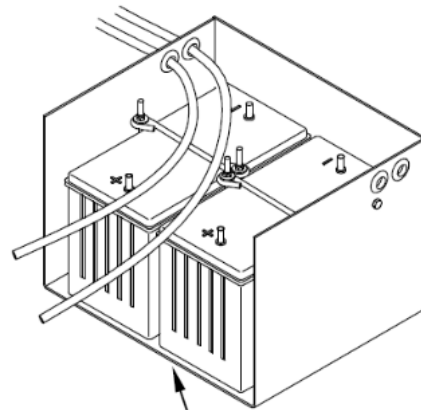
Be certain cables are protected with grommets when passing through metal holes or over sharp edges.

Auxiliary Battery kit w/Dual Cables

Cut cables to required length.

Use remaining length of cables to connect from auxiliary batteries to vehicle batteries (for truck applications only, trailers will use additional cables).

Install terminal lugs on ends of cables as shown below.



AUXILIARY OR VEHICLE BATTERIES



Protect wires from any sharp edges or holes that may abrade insulated covering of wires.



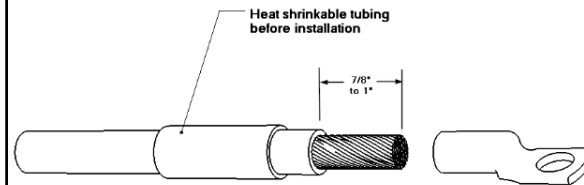
Secure battery cable so it does not come near, or in contact with, other vehicle wiring, fuel lines, brake lines, air hoses, exhaust system, etc.

INSTALLATION OF TERMINAL LUG

Strip 7/8" to 1" of insulation from end of cable. Slide heat shrinkable tubing onto cable. Insert bare wire into terminal lug until seated.

Crimp terminal with 4-way indent mil-spec crimp.

Terminal may also be soldered on.



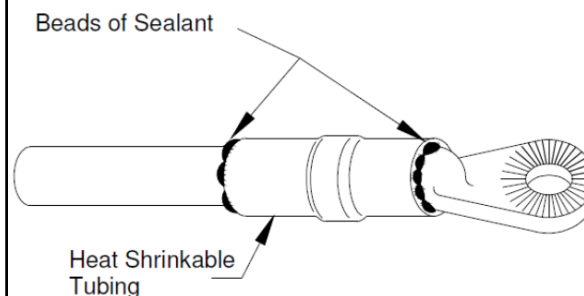
Position heat shrinkable tubing over terminal and end of cable.

Note: Red heat shrink is applied to power cable and black heat shrink to ground.

Shrink tubing using electric heat gun or torch.

Note: To reduce chance of damaging tube and cable, a heat gun is recommended.

Apply sufficient heat to produce thin bead of sealant all around tube edges.



Auxiliary Battery kit w/Dual Cables

INSTALLATION OF CIRCUIT BREAKER(S)

Batteries on a truck will require circuit breakers at both the auxiliary batteries and the vehicle batteries.

Locate and mount circuit breaker directly to batteries using copper terminal link supplied.

Circuit breakers must be mounted to give good protection against any objects coming into contact with circuit breaker terminals and causing a short. Positions must also be readily accessible to reset breakers.

Note: Circuit breaker is to rest solidly on battery to prevent vibration during transit.

If unable to connect circuit breaker direct to batteries, an optional 24" maximum length, 2 Ga. battery cable may be used.

Connect cables as shown

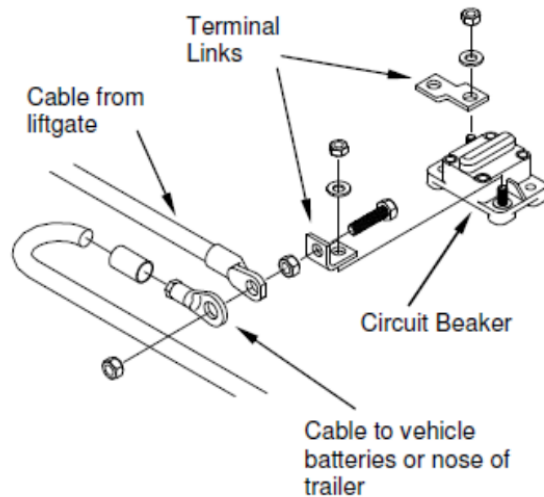
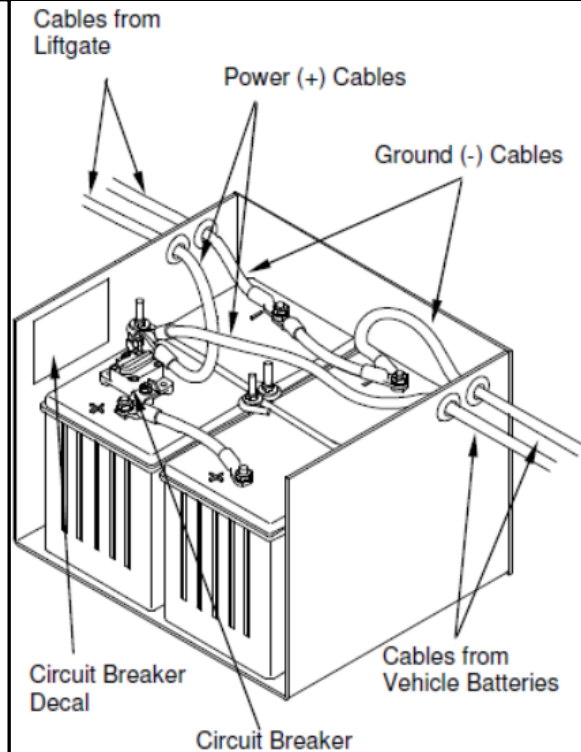
Apply a generous amount of dielectric grease to to all positive (hot) battery terminals and and circuit breaker terminals.

Install circuit breaker decal, 80100829, near the circuit breaker.

For trucks, use remaining length of cables supplied with liftgate and route from auxiliary batteries to vehicle batteries.

Install terminal lugs on cables as required per previous instructions.

Install circuit breaker and cables to vehicle batteries per previous instructions.



!	Protect wires from any sharp edges or holes that may abrade insulated covering of wires.
!	Secure battery cable so it does not come near, or in contact with, other vehicle wiring, fuel lines, brake lines, air hoses, exhaust system, etc.

IMPORTANT: If liftgate has a mounting bar, DO NOT operate liftgate before bar has been removed.

Auxiliary Battery kit w/Dual Cables

For trailer applications with dual pole socket:

Using cables supplied with trailer kit, feed each end through battery-box wall and install a terminal lug on both red and black cables.

Do not connect any cables to batteries at this time.

Run cables from battery box to trailer nose, securing them every 24" with cable ties.

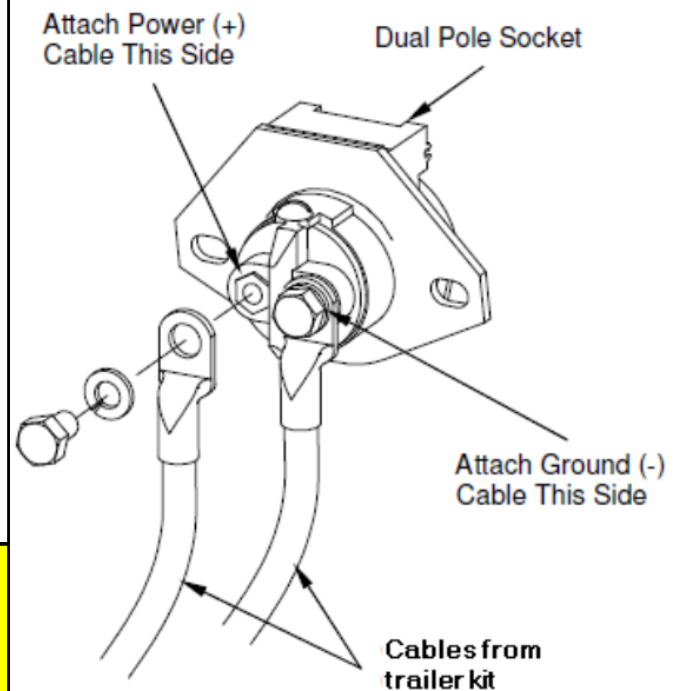
For trailer applications with dual pole socket:

Install dual pole socket in nose of trailer. Drill 1-3/4" hole in trailer and mount with hardware provided.

Route cables to socket as shown.

Apply a generous amount of dielectric grease over cable terminals.

IMPORTANT: Be sure to orient cables as shown, power (+) to the left, ground (-) to the right.



Power (charge) cable from tractor batteries to trailer must also be protected with a 150 amp circuit breaker at the tractor batteries.

Note: While these instructions can be used for single pole sockets, Waltco recommends dual pole sockets be used for their superior grounding abilities.

For trailer applications with single pole socket:

Using cable supplied with trailer kit, feed the end through battery-box wall and install a terminal lug on that end.

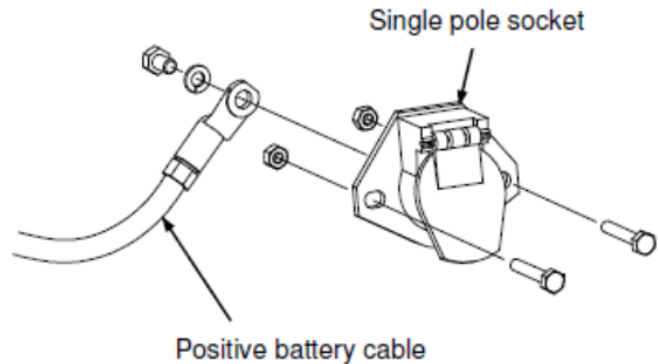
Do not connect any cables to batteries at this time.

Run cable from battery box to trailer nose, securing them every 24" with cable ties.

Auxiliary Battery kit w/Dual Cables

For trailer applications with single pole socket:

Drill 1-3/4" hole in nose of trailer for trailer socket.
Mount socket to trailer with bolts and nuts provided.
Attach cable to back of socket with bolt provided.
Apply a generous amount of dielectric grease over cable terminal.

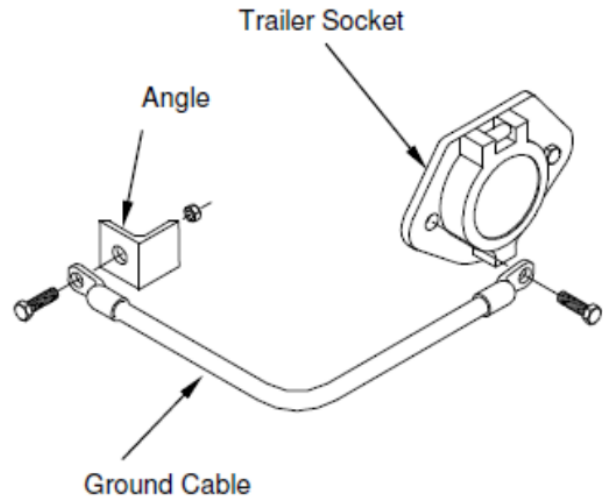


Power (charge) cable from tractor batteries to trailer must also be protected with a 150 amp circuit breaker at the tractor batteries.

Ground trailer socket to main structure of trailer.

Use the supplied 18" ground cable and bolt it to the trailer socket and suitable structure on the nose of the trailer.

An angle has been provided. It can be used by welding it to the crash plate or other suitable structure.

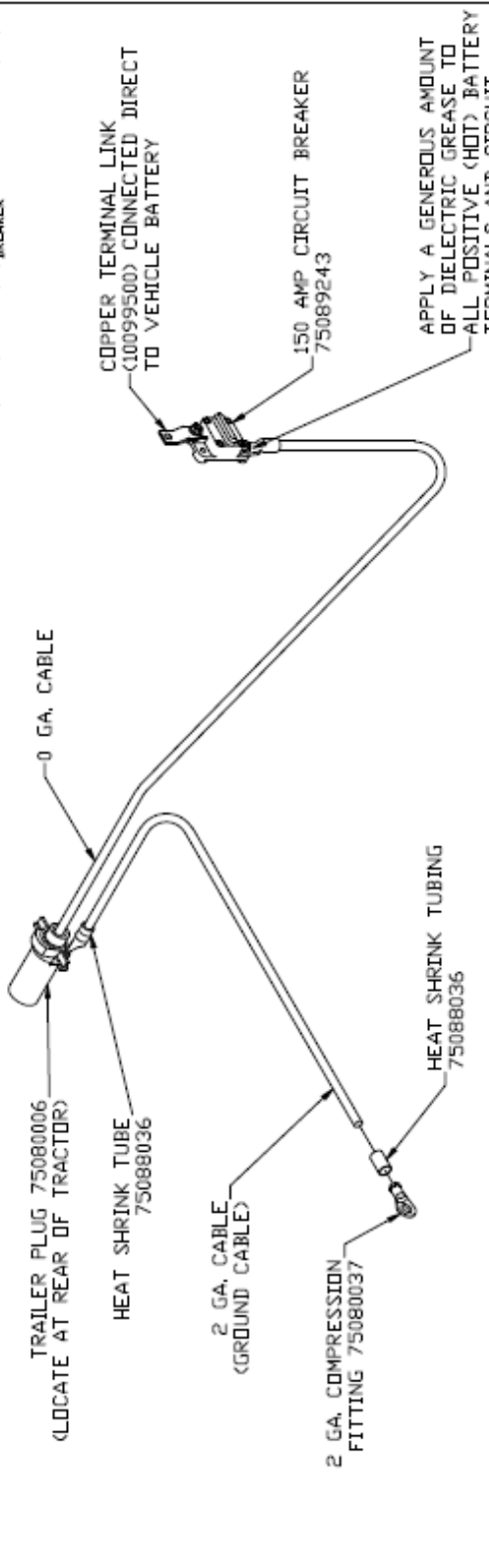


For all trailer applications:

After single or dual pole socket is installed:

Connect cable(s) to terminals in the battery box as shown previously; using a 150 amp circuit breaker to protect the charge circuit.

CA No.	DATE	CHANGE	BY	DATE
4547	9-24-2002	RE-DRAWN IN AUTO-CAD, CHANGED POSITION AND HOODUP OF CIRCUIT BREAKER	MK	



INSTRUCTIONS:

THE PURPOSE OF THIS KIT IS TO RUN THE LIFTGATE OFF OF THE TRACTOR BATTERIES.

1. LOCATE CIRCUIT BREAKER DIRECTLY ON VEHICLE BATTERY USING COPPER TERMINAL LINK (10099500). NOTE: IF UNABLE TO CONNECT CIRCUIT BREAKER DIRECT TO BATTERY, USE AN OPTIONAL 24" MAXIMUM LENGTH BATTERY CABLE TO CONNECT CIRCUIT BREAKER TO VEHICLE BATTERIES.
2. CUT CABLES TO LENGTH, INSTALL COMPRESSION TERMINALS, AND APPLY HEAT TO HEAT SHRINK TUBING SUPPLIED WITH KIT (SEE DRAWING 80100823).

IMPORTANT:
NEVER SECURE BATTERY CABLE IN SUCH A WAY THAT IT COMES INTO CONTACT WITH OTHER WIRING, FUEL LINES, BRAKE LINES, AIR HOSES, OR EXHAUST SYSTEM....ETC.

THIS DRAWING IS USED FOR POWER
KIT NUMBER 80000618

DATE	BY	DESCRIPTION	APPROVAL & SPEC.
9/24/02	MK	RE-DRAWN IN AUTO-CAD, CHANGED POSITION AND HOODUP OF CIRCUIT BREAKER	
		<input type="checkbox"/> VALTCO TRUCK EQUIPMENT CO. 10000 W. 10TH ST. WYOMING, WY 82001 PHONE: 307-778-7800 FAX: 307-778-7801 WWW.VALTCO.COM	
		TITLE: INSTALLATION OF TRACTOR WIRING KIT DRAWN: MK DATE: 9-27-02 SCALE: 1" = 1' PART NO. 80100823	



WALTCO



Dual Control Switch, Installation Instructions

For Kit 80000437

Note: Kit may include additional parts not used in all installations

Locating and Mounting Switch

Locate a position for Switch such that operator has a clear view of entire Platform area and will not be in the area that liftgate passes through.

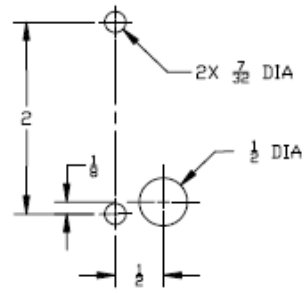
IMPORTANT

Verify that Control Cord is long enough to reach pump unit before advancing to the next step.

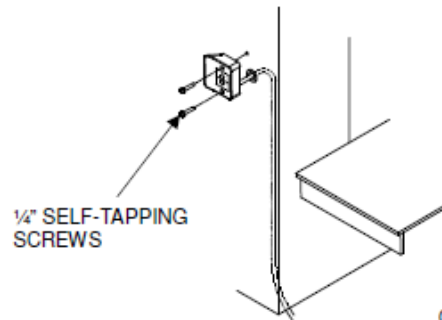
Using Switch Mounting Template or diagram to the right, drill two fastener holes with a 7/32" drill bit.

If Control Cord will be run through a hole in the side of the truck, drill 1/2" dia hole and remove all sharp edges and insert a grommet.

Mount Switch with 1/4" Self-tapping screws provided.



GR02652



GR02653

Route Control Cord into pump enclosure.

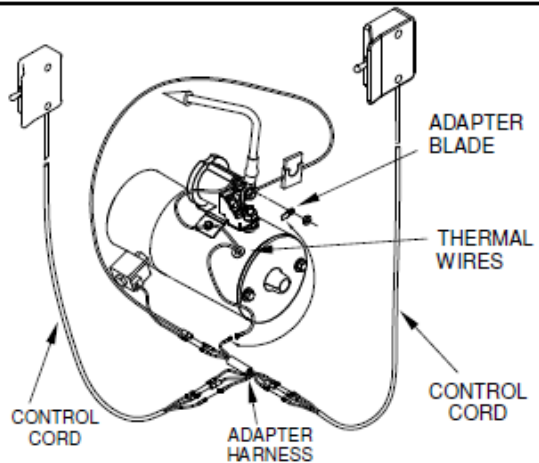
First connect Pump wires to Dual Control Adapter Harness as shown.

Connect both Control Cords to other ends of Adapter Harness as shown.

NOTE:

Match wire connections male to female. Color of wire may vary.

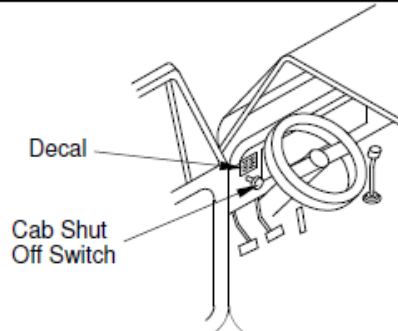
If motor does not have Thermal Wires, plug Adapter Harness into Adapter Blade.



GR02935

Installation of Cab Shut Off Switch

Install cab shut off switch and shut off switch decal in convenient location in vehicle cab.

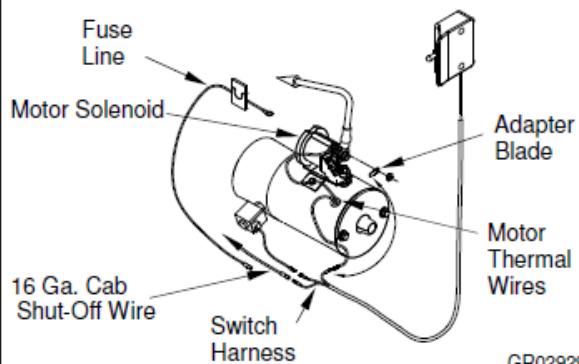


GR00379

Remove fuse line from motor solenoid. Unplug fuse line from switch harness and save for later installation.

Plug green 16 ga. x 40 ft. cab shut-off wire into switch harness.

Note:
If motor does not have Thermal Wires, plug switch wire into Adapter Blade.



GR02929

Run green 16 ga. x 40 ft. cab shut-off wire to cab shut-off switch.

Cut off excess wire and connect to cab shut off switch with supplied #10 ring terminal.

Re-using the fuse line, plug into excess 16 ga. wire.

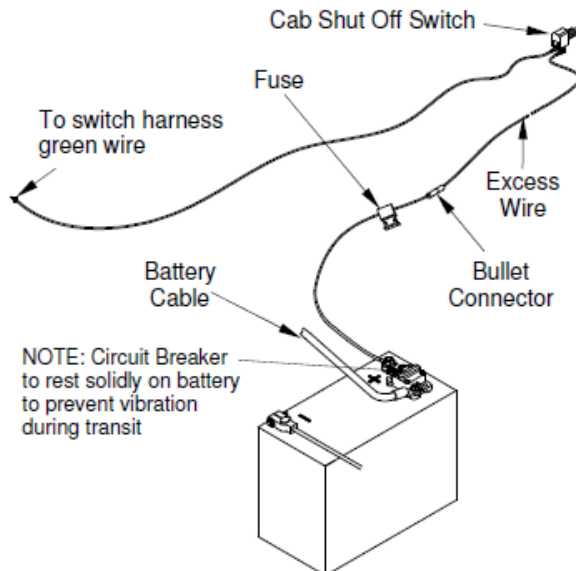
Run excess 16 ga. wire from vehicle battery to cab shut off switch. Fuse end to be toward battery.

Note: Do not connect to battery at this time.

Connect 16 ga. wire to cab shut off switch with supplied #10 ring terminal.

Connect fuse line to battery with attached 3/8" ring terminal.

Important: Heat shrink all connectors.



GR00716

80101363

EO7820
REV 06 3-2016

EM & HLF UNDER-RIDE INSTALLATION

INSTALLATION OF UNDER-RIDE BUMPER

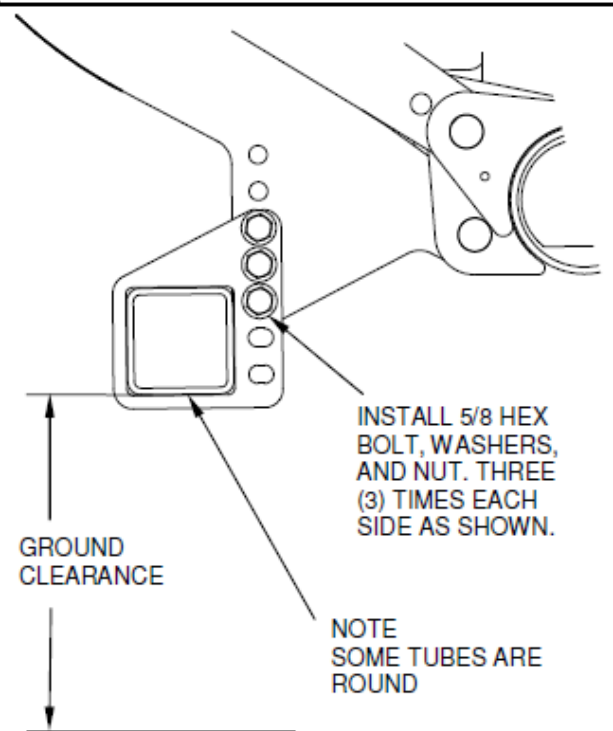
Align slots of under-ride bumper weldment with holes in lift arm at the desired height.

Install supplied 5/8" bolts, washers (2 per instance), and nuts. Three (3) must be used on each side of bumper as shown.

Torque to 100 ft-lbs minimum.

Operate liftgate to ensure proper ground clearances through complete cycle.

NOTE: To be compliant with Federal DOT Standard, Part 571.224, bumper must be installed per above directions and cannot exceed 22" of Ground Clearance in stored position.



GR02734

INSTALLATION INSTRUCTIONS

HLF CERTIFIED UNDER-RIDE TRAILER INTERFACE KIT

This Interface Kit is for mounting Waltco HLF-40/50 Flipaway to trailers with sliding rear suspensions.



This kit must be used to meet Canadian Under-ride CMV223 Certification. Interface components also must be welded as shown to meet certification.

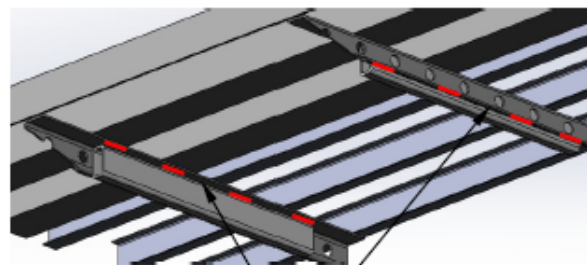
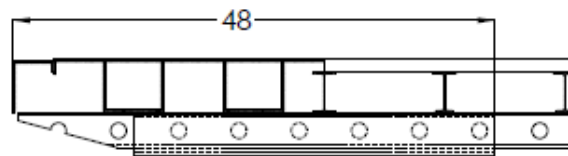


Ensure "Z" channels are adequately welded to trailer body.

Step 1:

Locate the 3x4 rectangular tubing 48" from rear sill as shown and weld to "Z" channels of trailer.

Weld four 4" long $\frac{1}{4}$ " fillets on top and bottom of each 3x4 tube to the "Z" channels as shown.

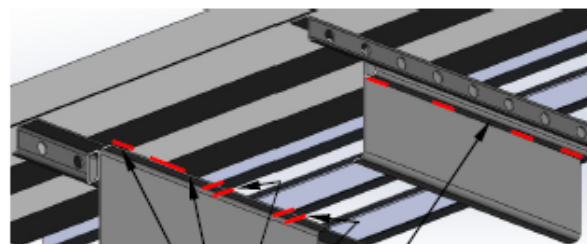


$\frac{1}{4}$ 4" - 10 5/8" TYP

Step 2:

Locate the formed channels to inside of 3x4 tubing with "C" facing inward and up tight against the crossmembers as shown. Align length flush with ends of 3x4 tubing.

Weld $\frac{1}{4}$ " fillets on top of "C" channels to all crossmembers in contact. Weld $\frac{1}{4}$ " fillets on top of "C" channel parallel to "I" beam crossmembers on both sides. **DO NOT WELD ACROSS BOTTOM OF "I" BEAMS.** Then on outside of "C" channels, weld four 4" long $\frac{1}{4}$ " fillets between "C" channels and 3x4 tubes as shown.



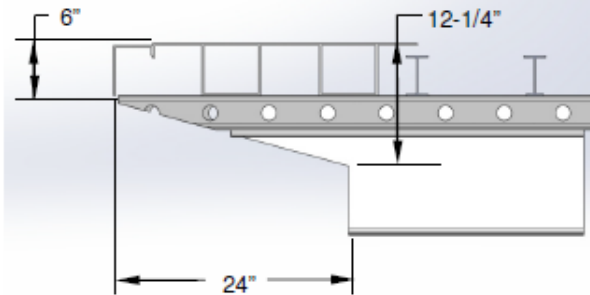
$\frac{1}{4}$ 4" - 10 5/8" TYP

INSTALLATION INSTRUCTIONS HLF CERTIFIED UNDER-RIDE TRAILER INTERFACE KIT

Step 3:

Cut away trailer frame as required to obtain the minimum clearance indicated.

NOTE: Same cut away as in installation manual 80122701



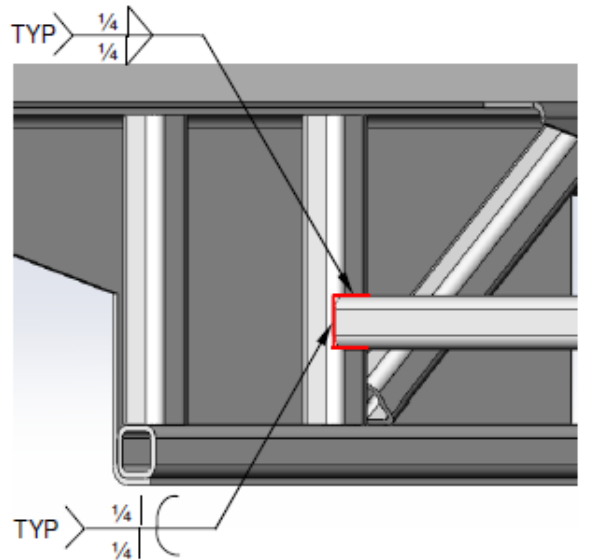
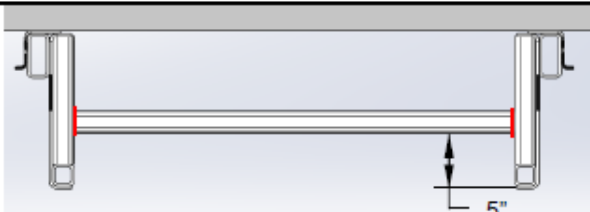
P

Step 4:

Place long 2x2 tube horizontal between interface plates. Locate on center 2x2 tube approximately 5" from the bottom of the "C" channel as shown.

Ensure interface plates are hanging vertical and spacing between plates is consistent from top to bottom within +/- 1/16"

Weld 1/4" fillets and flare bevels all around each end of long 2x2 tube to vertical 2x2 tubes as shown.



LIFTGATE INTERFACE INSTALLATION

80101257

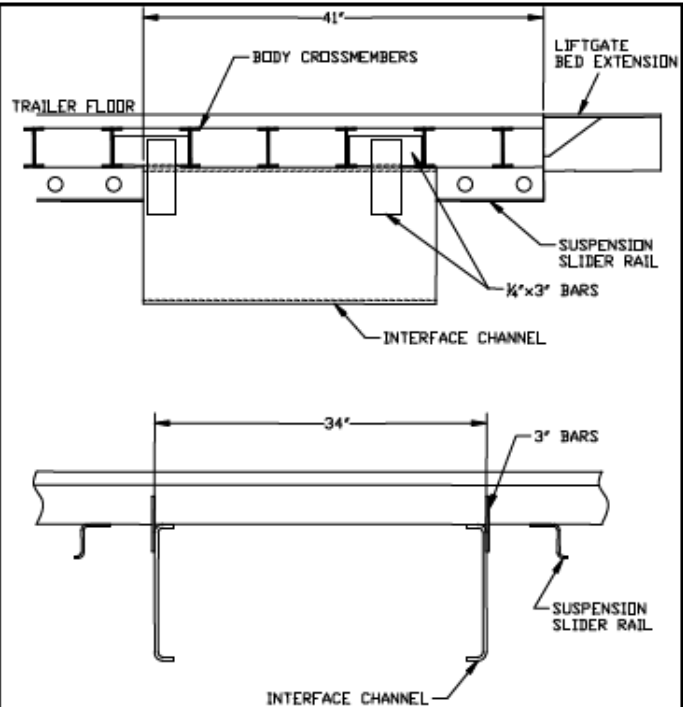
This Interface Kit is for mounting most Waltco Flipaway and Conventional liftgates to trailers with sliding rear suspensions.



This kit is not to be used for any liftgates that have a capacity rating over 4,400 pounds.

Interface channels must be welded to crossmembers as shown for adequate support of liftgate.

- Determine location of interface channels, 41" forward of rear sill, and at 34" spacing (centered on trailer).
- Weld channels to crossmembers as shown below.
- Cut four (4) of the 3" bars to fit between webs of crossmembers.
- Locate bars flush with channels and weld as shown.
- Locate and weld the additional 3" bars to tie channels and bars between crossmembers.



GR02752

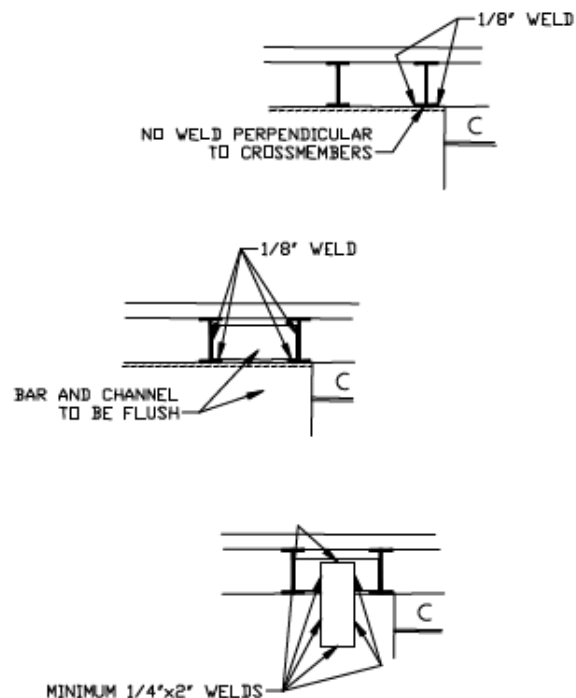
WELDING

- Weld each interface channel to minimum of four (4) crossmembers as shown above and at right.



Weld parallel to Cross Members, along top of Mounting Angles. **Never** perpendicular to Cross Members, as structural damage to the Trailer could result.

- Weld 3" bars between crossmembers at each end of interface channel as shown.
- Weld vertical 3" bars tying horizontal 3" bars and interface channels together as shown.



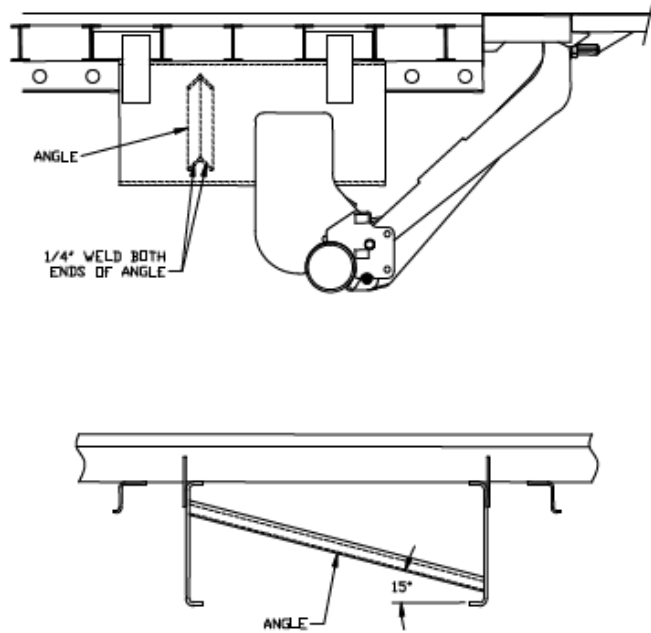
GR02753

LIFTGATE INTERFACE INSTALLATION

80101257

ANGLE

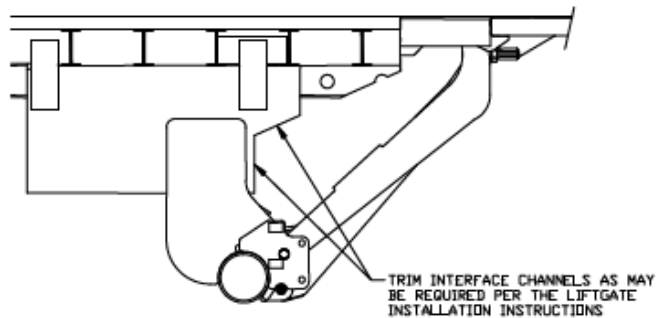
- Cut 2'x2" angle to fit between interface channels at an angle of approximately 15 degrees as shown.
- Position angle approximately as shown, such that it will not interfere with the liftgate. (This step should be done after liftgate is positioned)
- Weld angle into position.



GR02754

Trim Channels

- Trim interface channels and other trailer components as may be required per the liftgate installation instruction manual.



GR02755

Rev 05
EO8413
8-12-10

HLF WALK RAMP KIT INSTALLATION INSTRUCTIONS

HLF WALK RAMP KIT

*This kit is for bed height ranges of 49" fully laden to 60" empty.

**Additional bed height restrictions may apply.

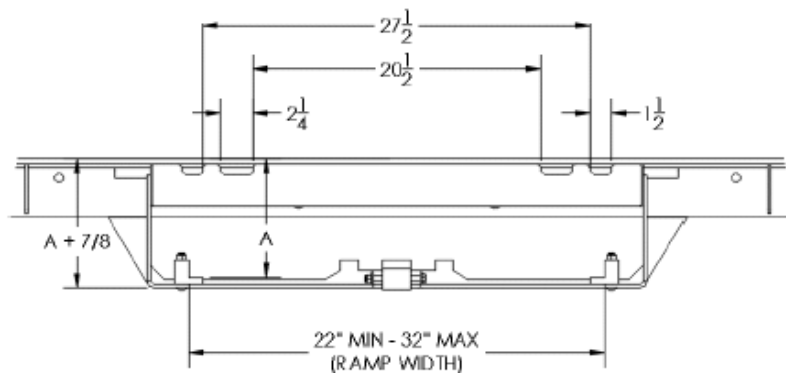
Walk Ramp Clearances

Check clearances prior to installing walk ramp kit.

Note Walk Ramp "A" Dim

Remove any items that cause interference.

This kit includes Walk Ramp Latch, Up-Stop Spacers, Up-Stops, Dock Bumper Spacers, and Walk Ramp Bracket.



GR02804

Assemble Walk Ramp Bracket and Up-Stops to Bed Extension

Bolt Walk Ramp Bracket to Bed Extension, as shown, with supplied 3/8" bolts, nuts, and washers. See chart on next page.

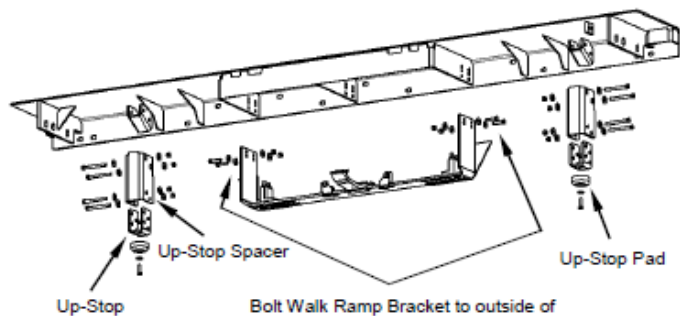
Note: Walk Ramp Bracket goes outside of support bars of Bed Extension.

Bolt on Up-Stop Spacer to Bed Extension, as shown, with supplied 3/8" bolts, nuts, and washers.

Bolt Up-Stop Pad to Up-Stop, as shown, with supplied 5/16" bolts, nuts, and washers.

Note: Failure to locate up-stop pads will result in damage to liftgate and walk ramp.

Bolt Up-Stop to Up-Stop Spacer, according to instructions on following page, with supplied 3/8" bolts, nuts, and washers.



GR10120

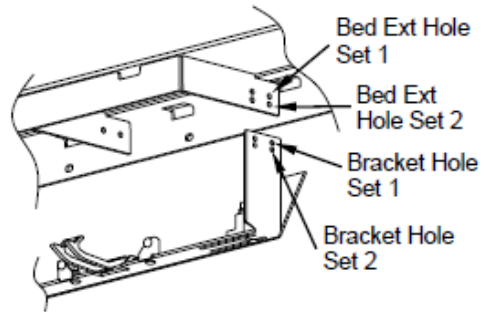
HLF WALK RAMP KIT INSTALLATION INSTRUCTIONS

Mounting Chart for Walk Ramp Bracket

Based on the walk ramp "A" dim and type of walk ramp, mounting the walk ramp bracket varies slightly.

Walk Ramp Type	A = 8-1/2"		A = 9"	
	Bracket Hole Set	Bed Ext. Hole Set	Bracket Hole Set	Bed Ext. Hole Set
Standard	2	1	1	1
Spring Assist	2	2	1	2

IMPORTANT: For every inch the walk ramp is lowered beyond 8-1/2", the equal amount must be added to minimum laden bed height.



GR02858

Additional Spacers

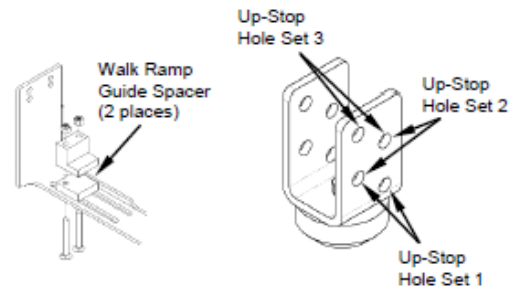
If "A" dim is 8-1/2" with standard walk ramp, use Up-Stop Hole Set 1.

If "A" dim is 8-1/2" with spring assist walk ramp, add Walk Ramp Guide Spacers and use Up-Stop Hole Set 2

If "A" dim is 9" with standard walk ramp, use Up-Stop Hole Set 2.

If "A" dim is 9" with spring assist walk ramp, add Walk Ramp Guide Spacers and use Up-Stop Hole Set 3.

IMPORTANT: For every inch the walk ramp is lowered beyond 8-1/2", the equal amount must be added to minimum laden bed height.

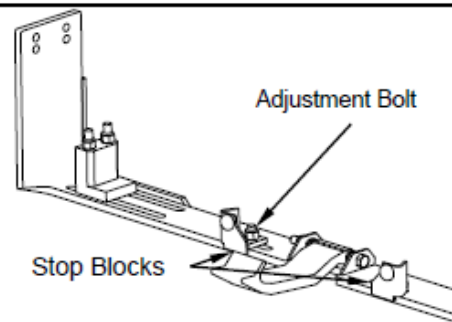


GR10121

Adjust Stop Blocks

Loosen adjustment bolts and slide stop blocks to proper width for the ramp.

Retighten adjustment bolts.



GR03008

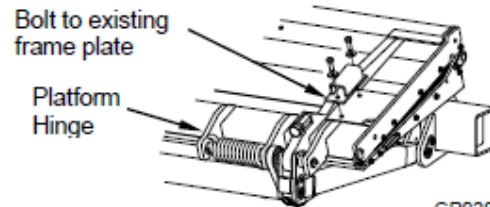
HLF WALK RAMP KIT INSTALLATION INSTRUCTIONS

Assemble Platform Brackets to Platform Frame

Orient the Platform Bracket with short leg towards the platform hinge.

Bolt on Platform Brackets with supplied 1/2" self tapping bolts.

Short Leg of Platform Bracket Towards Platform Hinge



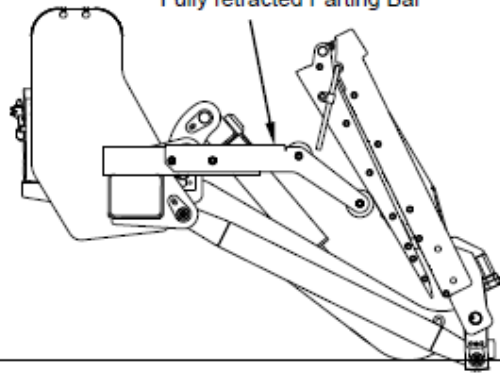
GR02808

Adjustment of Parting Bar

The Parting Bar must be located in the fully retracted position as show to right.

Tighten nuts and bolts to 50 ft lbs.

Fully retracted Parting Bar



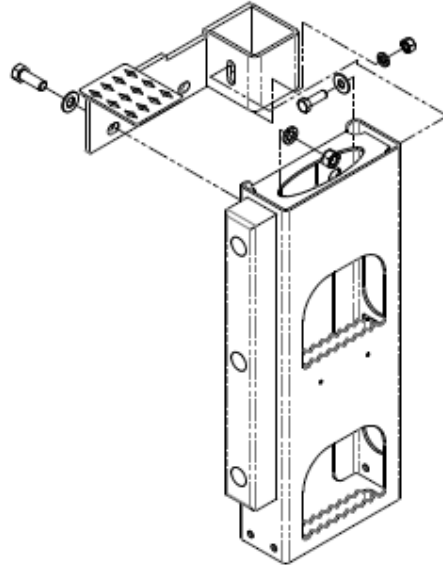
GR02799

HLF WALK RAMP KIT INSTALLATION INSTRUCTIONS

Assemble Dock Bumper to Spacer

Attach Dock Bumper to Spacer with supplied 5/8" bolt, nut, and washers and 1/2" bolt, nut, and washers.

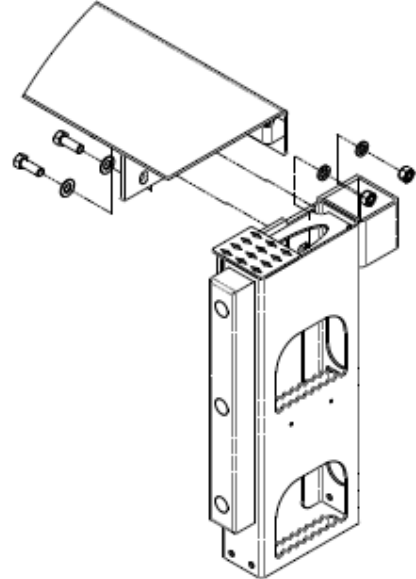
Attach Dock Bumper Spacer to Bed Extension with supplied 5/8" bolts, nuts, and washers.



GR10122

Assemble Dock Bumper Spacer to Bed Extension

Attach Dock Bumper Spacer to Bed Extension with supplied 5/8" bolts, nuts, and washers.



GR10122

HLF WALK RAMP KIT INSTALLATION INSTRUCTIONS

Final Inspection

After all components from Walk Ramp Kit have been installed, carefully run liftgate through a complete cycle to check for interferences.

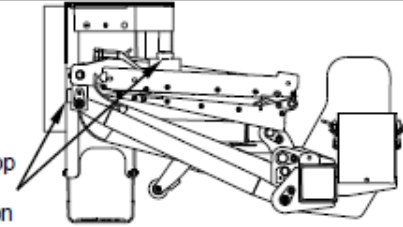
Check platform storage:

- Ensure Up-Stops contact Platform Brackets
- Ensure liftgate does not extend beyond steel of Dock Bumper

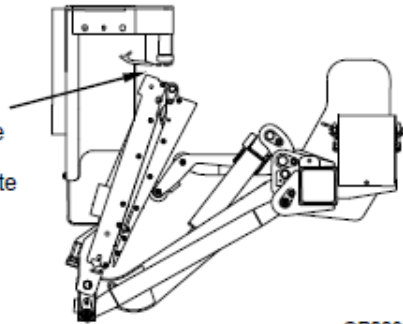
Check platform operation:

- Ensure platform does not contact Walk Ramp Bracket nor Up-Stops when opening and closing.
- If contact does occur, the Parting Bar was not adjusted or the bed height is too low.

Check Up-Stop
contact &
liftgate location



Check for
contact while
opening and
closing liftgate



GR02808

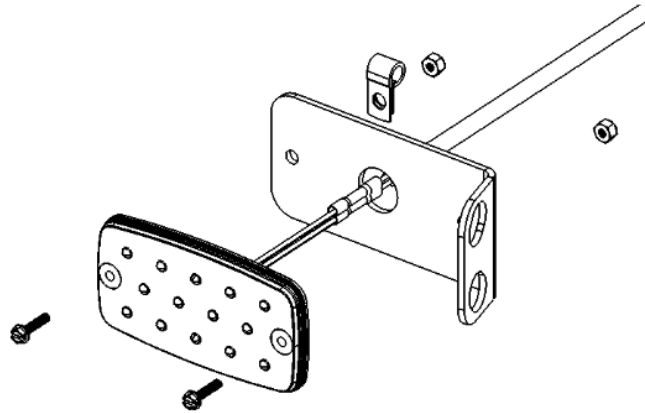
I/I, FLIPAWAY WORK LIGHT & ARC LIGHT

80101786

Install each light harness on light brackets using #8-32 screws and lock nuts.

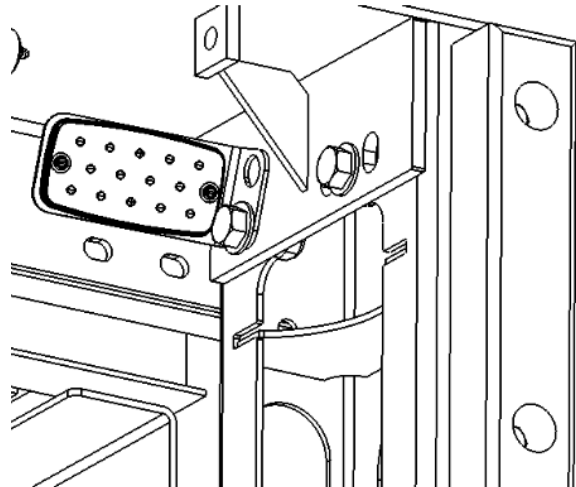
Secure wiring harness to the bracket with 1/4" "P" clamp.

Curbside harness is approximately three feet long and the driver side is approximately seven feet long.



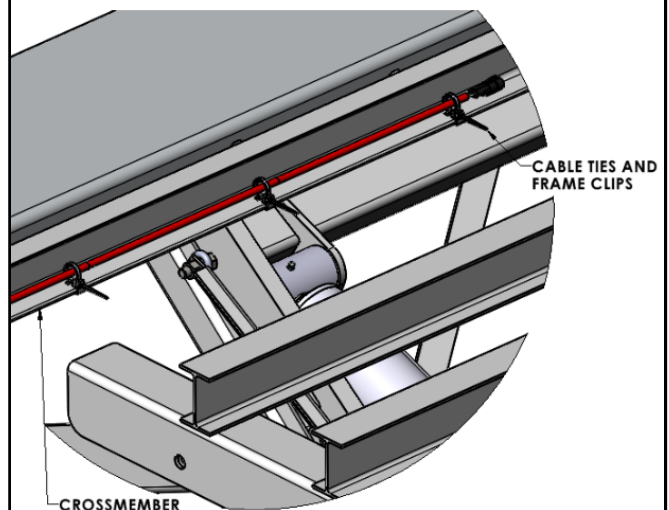
Install each light bracket under bed extension using rear most dock bumper bolt.

Angle of light can be adjusted and tightened down After power has been applied to liftgate.



Route each light harness along rear most crossmember of the floor using frame clips and cable ties.

Body floor and side wall have been removed for clarity.



I/I, FLIPAWAY WORK LIGHT & ARC LIGHT

80101786

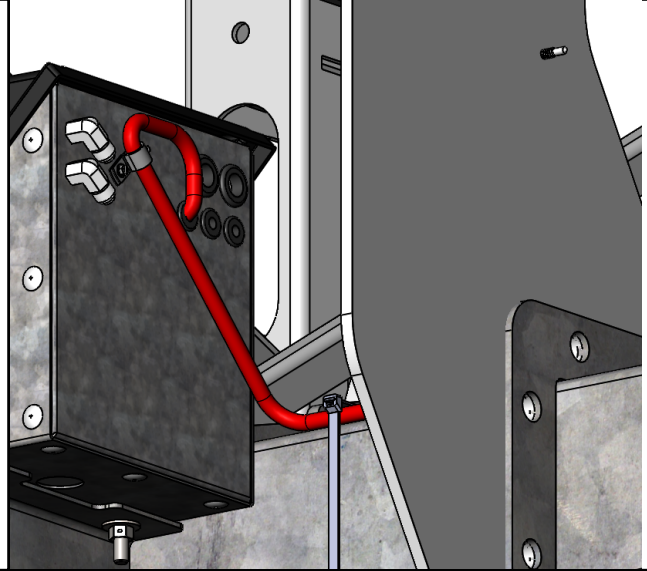
Remove knock out on the back of pump box and install rubber grommet.

Route the two connector end of the seven foot splitter harness into the pump box through the grommet.

Connect the two .180 bullet connectors of the harness to the two .180 bullet connectors of the relay harness.

Secure harness to back of pump box with "P" clamp, #8 screw and lock nut. Secure harness to mount tube using 16" cable ties.

Hydraulic hoses not shown for clarity. Harness shown in red for clarity.



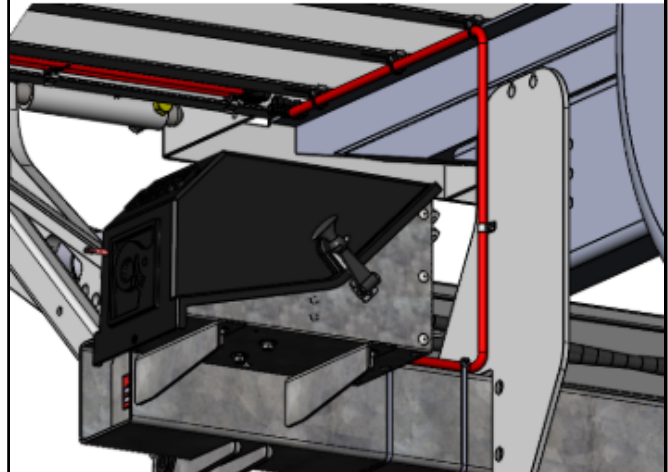
Route harness across mount tube to mount plate and then up to body crossmembers.

Secure harness to mount plate using self drilling/tapping screw and "P" clamp.

Secure harness to bottom of crossmembers using frame clips and cable ties.

Connect both light harnesses to splitter harness.

One of the connectors on splitter harness has plugs in it for the optional Arc Light harness.



Test the lights for proper operation.

The lights should come on when the switch to lower is activated and remain on while lowering.

Release the lower switch and the lights should remain on.

Activate the raise switch and while raising the lights should remain lit.

When the raise switch is deactivated, the lights should turn off.

I/I, FLIPAWAY WORK LIGHT & ARC LIGHT

80101786

ARC LIGHT INSTALLATION (OPTIONAL)

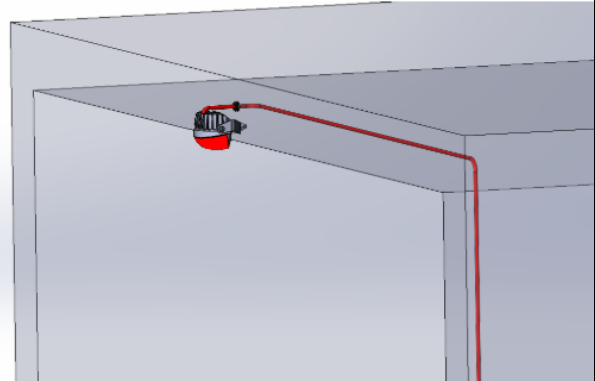
Route the two .180 bullet connector end of 18 foot Arc light harness up through the curd side corner post to the header of the body. Then continue to route it to the centerline of the header and through the grommet.

Consideration should be given to ID marker lights and back up camera when locating Arc light.

Corner post and header shown in see through mode.

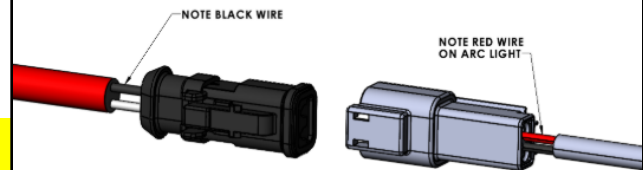
Route Arc light harness along rear most crossmember of the floor using frame clips and cable ties of work light harness.

Remove the seal plugs on the third connector of splitter harness and connect the Arc light harness.



Connect harness to the light.

ALTHOUGH THE ARC LIGHT COULD BE WIRED INTO THE CAB SHUT OFF SWITCH IF SO DESIRED. SEE NEXT PAGE TO DO SO.



80001596

Test the Arc light for proper operation.

The light should come on when the switch to lower is activated and remain on while lowering.

Release the lower switch and the light should remain on.

Activate the raise switch and while raising the light should remain lit.

When the raise switch is deactivated, the light should turn off.

I/I, FLIPAWAY WORK LIGHT & ARC LIGHT

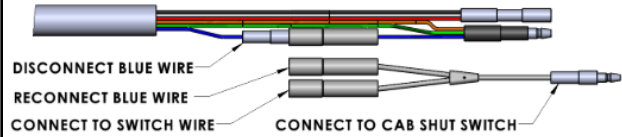
80101786

To connect Arc light to cab shut off switch, disconnect blue wire at bullet connector as shown in the pump box.

Then reconnect it to "Y" splitter harness.

Then connect the switch connector and the cab shut off switch as shown to the right. Reference cab shut off installation instructions, part number 80101363

Then test for proper operation, the Arc light should turn on and off with the cab shut off switch.



How To Order Parts

Repairs should be made only by authorized mechanic using WALTCO Replacement parts.

When ordering repair or replacement parts, please include all of the information asked for below. If this information is not available, a complete written description or sketch of the required part will help WALTCO identify and deliver the needed part to you.

THE FOLLOWING INFORMATION MUST BE INCLUDED:

- 1 SERIAL NUMBER - [WALTCO liftgate serial numbers can be found on the Specification tag attached to the mount frame. (On older units, the Specification Tag is located on the side or bottom of the platform)]
- 2 MODEL NUMBER - [Or capacity]
- 3 PLATFORM SIZE

THEN INCLUDE THE FOLLOWING INFORMATION:

- 4 PART NUMBERS
- 5 DESCRIPTION
- 6 QUANTITY REQUIRED

MAIL, E-MAIL OR PHONE YOUR REQUEST TO :

Waltco lift Corp.
1777 Miller Parkway
Streetsboro, OH 44241
1-800-411-5685
FAX: 1-800-411-5684
E-MAIL: parts@waltco.com

ALL PARTS ARE F.O.B. FROM THE SHIPPING FACTORY

PLEASE NOTE:

To assure you of continuing and effective quality control, our warranty policy permits replacement of hydraulic cylinders, valves and motor pump units when their factory seals are intact. Parts under warranty will be exchanged after careful inspection of the returned assemblies.

80101389

EO10758
REV 03



Every vehicle that has a WALTCO liftgate must have legible WARNING AND OPERATION DECALS clearly posted on the vehicle and an OWNER'S MANUAL in the vehicle at all times as a guide for proper operation and maintenance.

Additional WARNING DECALS, OPERATION DECALS and OWNER'S MANUALS can be obtained from WALTCO LIFT CORP.

NOTE:

When ordering, give model
and serial number of the liftgate

IMPORTANT



WARNING

Improper operation and maintenance of this liftgate could result in severe personal injury or death.

Read and understand the contents of this manual and all warning and operation decals before operating and/or performing maintenance on this liftgate.

For SAFETY information on this liftgate see Chapter 1 of this manual