

Hiab XS 111 CLX

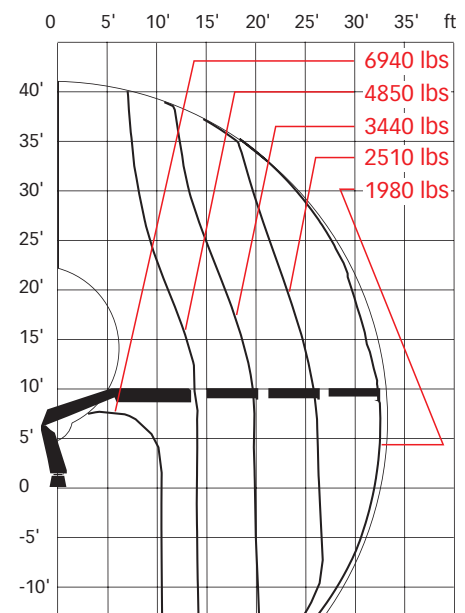
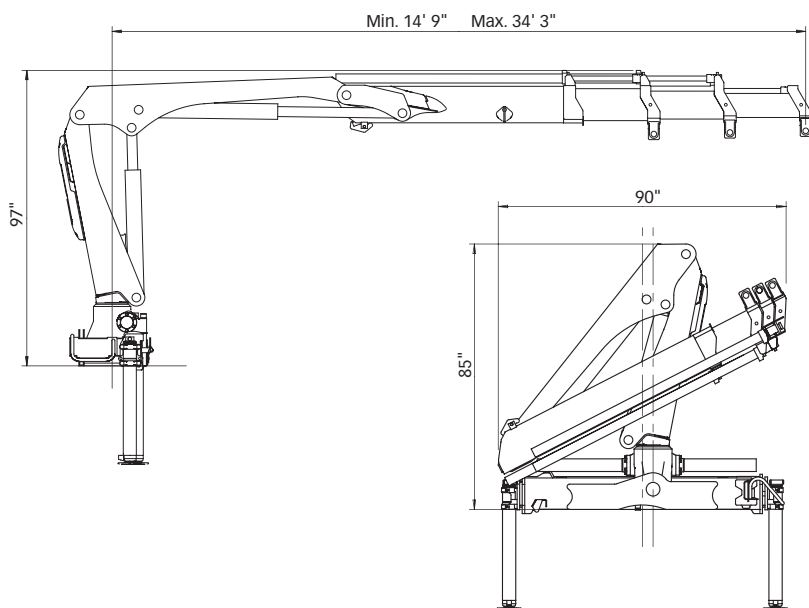
Capacity 72,000 ft-lbs



Hiab XS 111 CLX Basic data

Technical data	B-1 CLX	BS-2 CLX	B-2 CLX	BS-3 CLX	B-3 CLX
Max. lifting capacity (ft-lbs)	75 250	73 010	71 560	70 040	68 590
Outreach, hydraulic extensions	19' 8"	-	26' 3"	-	33' 2"
Outreach, manual extensions	33' 2"	38' 9"	39' 8"	38' 9"	39' 8"
Outreach / lifting capacity (ft / lbs)	7' 7" / 9 810	7' 7" / 9 590	9' 2" / 7 830	7' 7" / 9 260	10' 2" / 6 940
	13' 9" / 5 470	12' 10" / 5 690	13' 9" / 5 200	12' 10" / 5 470	14' 1" / 4 850
	19' 0" / 3 970	18' 1" / 3 970	19' 4" / 3 700	18' 4" / 3 660	19' 4" / 3 440
	-	-	-	31' 2" / 2 690	32' 2" / 2 510
Slewing angle	0° - 0°	0° - 0°	0° - 0°	0° - 0°	0° - 0°
Height in folded position	85"	85"	85"	85"	85"
Width in folded position	85"	89"	89"	90"	90"
Installation space needed	32"	32"	32"	34"	34"
Weight, "standard" crane without stabilizers (lbs)	2,380	-	2,650	-	2,870
Weight, stabilizer equipment (lbs)	310 - 630	310 - 630	310 - 630	310 - 630	310 - 630

Hiab XS 111 B-3 CLX



Disclaimer. Hiab cranes have been built to meet the highest standards of safety and service life and have been thoroughly tested. Strength calculations for this model have been carried out in accordance with EN13001 in fatigue class S2. Cargotec's certified Quality Assurance System complies with ISO 9001. Some of the items in our literature may be extra equipment. Certain applications may require an official permit. We reserve the right to change technical specifications without prior notice. Hiab cranes produced for EU-countries are CE-marked and comply with the European Standard EN 12999.

Cargotec improves the efficiency of cargo flows on land and at sea – wherever cargo is on the move. Cargotec's daughter brands – Hiab, Kalmar, and MacGregor – are recognized leaders in cargo and load handling solutions around the world. Cargotec's global network is positioned close to customers and offers a wide range of services that ensure the continuous, reliable, and sustainable performance of equipment. www.cargotec.com