

# Hiab Multilift Demountables Productview



Go with the leader

# Hiab Multilift demountable load handling systems

Product	Page
Hooklift	3
XR Light range XR2 - 7S	4
XR Medium range XR8 + 10S	6
XR Power range XR14 - 26T	8
XR Power range XR14 - 30S	10
XR Power range XR21 + 26Z	14
LH Basic range LH17 - 22S	16
Skiploader SLT 142 + 192	18
Cablelift CLF	20

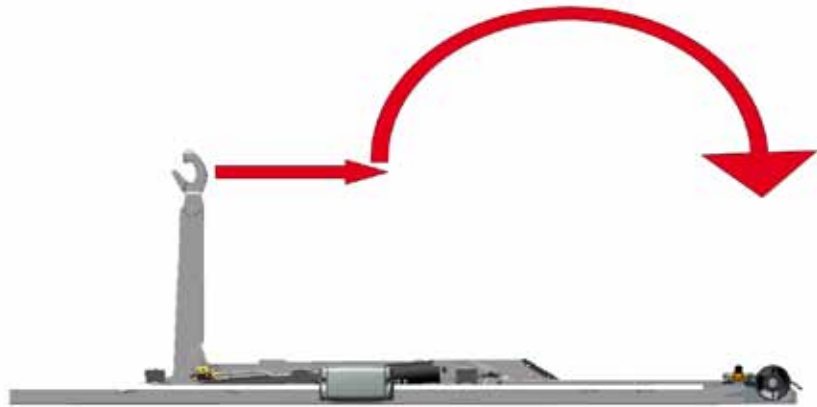
As the global market leader we offer you unrivalled experience and expertise in the design and development of demountable systems. Our success is based on tailor-made products and cost-effective solutions which we develop in close co-operation with our customers.



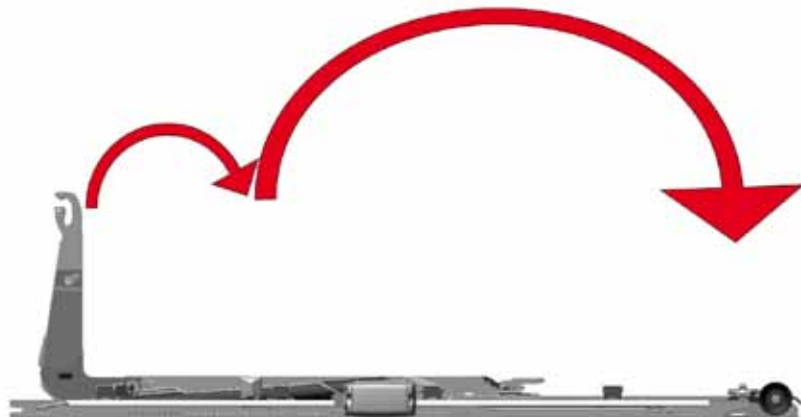
You'll easily find the most effective load handling solution for your purposes from our all-inclusive product offering, which includes hooklift and cablelift systems, as well as skiploaders suitable for both light and heavy vehicles. Our goal is to respond to our customers' needs by creating a partnership with the customer and learning more of their business. By doing so we are able to provide the solution that will both improve our customers' competitiveness and reduce the owning and operating costs of the equipment to an absolute minimum. A Hiab Multilift is a safe investment for the future.

# Hooklift

**S-model**  
**Sliding hooklift**



**T-model**  
**Tilting hooklift**



**Z-model**  
**Sliding and Tilting hooklift**





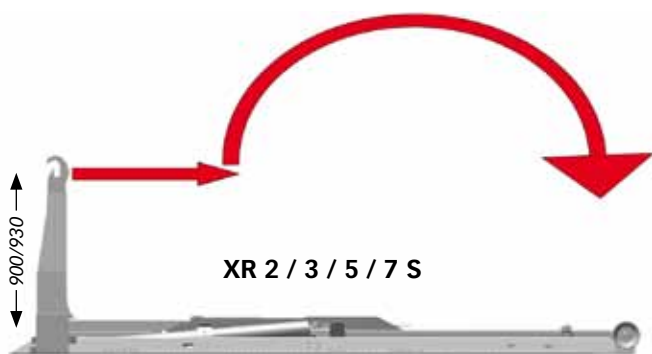
# XR Light range



# XR2 - 7S

The modular XR Light range hooklifts represent a major breakthrough in demountable technology. This pioneering user-oriented concept is based on a sliding hook mechanism, an innovative new single-plate subframe, and ingenious lifting frame designs. The result is a unique product that delivers outstanding performance with fast and easy body loading and unloading functions. The lifting capacities for these hooklifts range from 2 to 7 tonnes and they can be fitted to 3.5 - 10 GVW trucks.

- Well-proven construction and great safety features (e.g. tipping lock and hook safety latch)
- Easy and fast mounting on the truck
- Operator comfort: no wrong operations thanks to interlock safety features
- Low weight > greater payload > higher rentability
- A lower operating radius during loading and unloading cycle makes the XR system ideal for use in low-height applications
- Simple and clearly marked controls; fast, easy and precise operation



Model	Lifting and tipping capacity	Equipment length, G-Length	min. Body length	max. Body length	System weight	GVW of the vehicle
XR2S.27	2000 kg	2700	3000 mm	3000 mm	390 kg	ca. 3,5 t
XR2S.29	2000 kg	2950	3000 mm	3500 mm	410 kg	ca. 3,5 t
XR2S.32	2000 kg	3200	3500 mm	4000 mm	430 kg	ca. 3,5 t
XR3S.27	3000 kg	2700	3000 mm	3000 mm	400 kg	ca. 4,5 t
XR3S.29	3000 kg	2950	3000 mm	3500 mm	420 kg	ca. 4,5 t
XR3S.32	3000 kg	3200	3500 mm	4000 mm	440 kg	ca. 4,5 t
XR5S.32	5000 kg	3250	3000 mm	4000 mm	650 kg	ca. 7,5 t
XR5S.36	5000 kg	3650	3500 mm	4500 mm	690 kg	ca. 7,5 t
XR5S.41	5000 kg	4150	4000 mm	5000 mm	730 kg	ca. 7,5 t
XR7S.32	7000 kg	3250	3000 mm	4000 mm	930 kg	ca. 10/12 t
XR7S.36	7000 kg	3650	3500 mm	4500 mm	960 kg	ca. 10/12 t
XR7S.41	7000 kg	4150	4000 mm	5000 mm	990 kg	ca. 10/12 t

The indicated body lengths consider at present current DIN 30722. Body length can vary in different markets. With the min. body lengths the demountable body can be tilted partly only conditionally. Exact G-Length can be +20mm/-40mm from dimension in the table depending on the hook height and body standard.

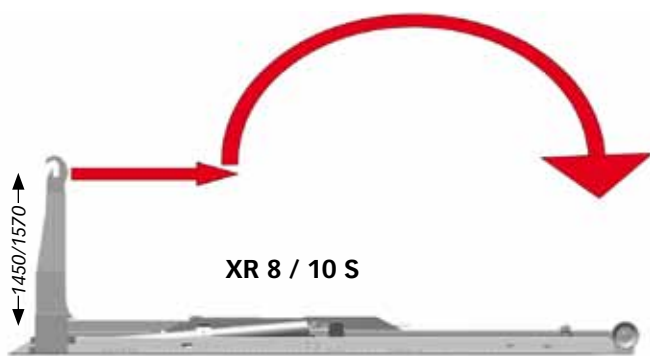
# XR Medium range



# XR8 + 10S

The XR Medium range hooklifts for 12 - 15 GVW trucks are power packages in their own right. The exceptional low weight / high strength ratio enables larger payloads, enhances the versatility of the vehicle and maximises its usage. Safety features include load-holding valves directly on the cylinders and a tipping lock mechanism.

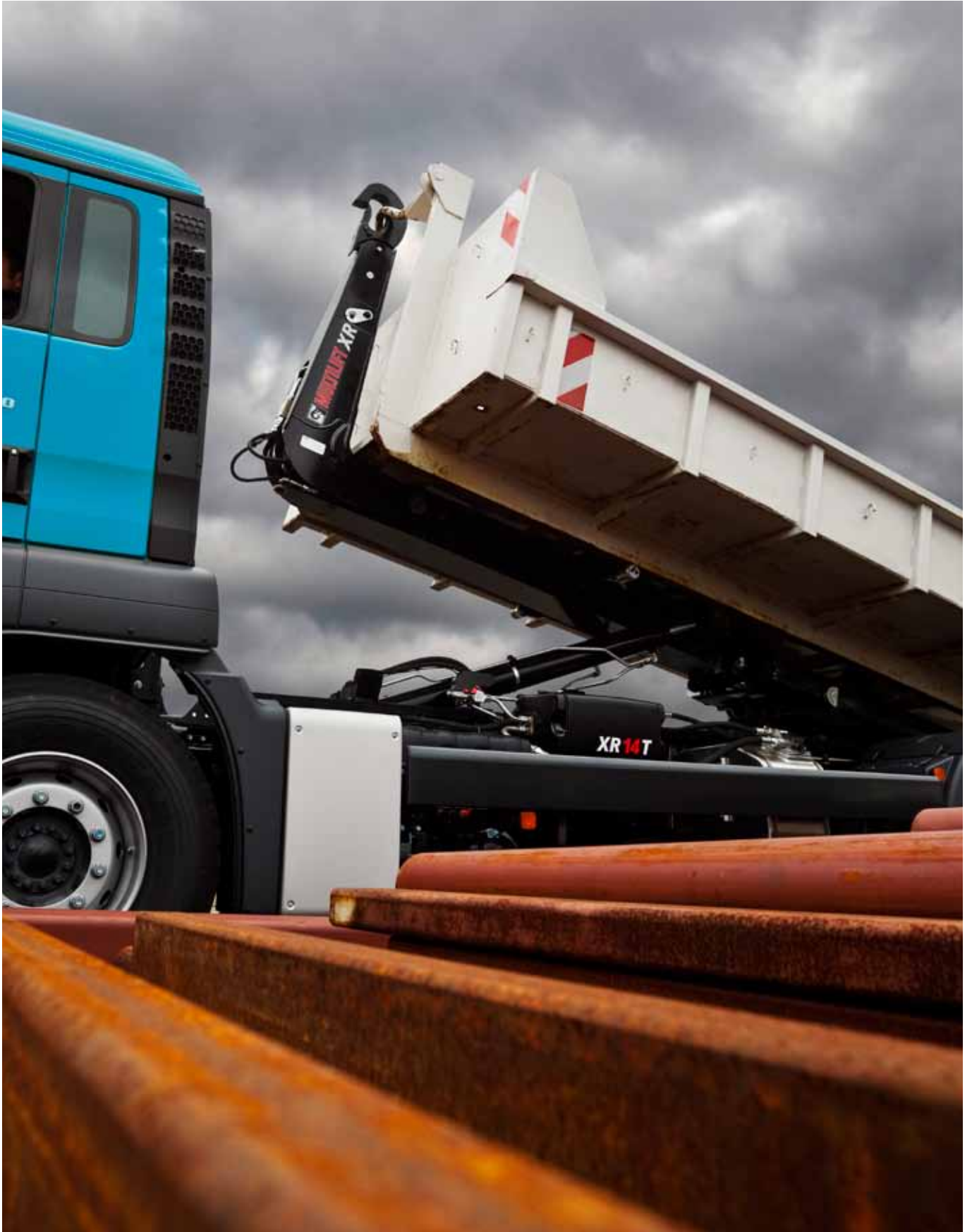
- A low installation height and centre of gravity provide outstanding stability
- Low weight combined with optimal construction guarantees higher payloads
- Well-proven construction and great safety features (e.g. tipping lock and hook safety latch)
- Welding minimised in critical areas > strong structure
- A lower operating radius during loading and unloading cycle makes the XR system ideal for use in low-height applications
- Fast, easy and precise controls



Model	Lifting and tipping capacity	Equipment length, G-Length	min. Body length	max. Body length	System weight	GVW of the vehicle
XR8S.32	8000 kg	3250	3000 mm	4000 mm	980 kg	ca. 12/14 t
XR8S.36	8000 kg	3650	3500 mm	4500 mm	1010 kg	ca. 12/14 t
XR8S.41	8000 kg	4150	4000 mm	5000 mm	1040 kg	ca. 12/14 t
XR10S.32	10000 kg	3250	3000 mm	4000 mm	990 kg	ca. 15 t
XR10S.36	10000 kg	3650	3500 mm	4500 mm	1040 kg	ca. 15 t
XR10S.41	10000 kg	4150	4000 mm	5000 mm	1070 kg	ca. 15 t
XR10S.46	10000 kg	4600	4000 mm	5500 mm	1110 kg	ca. 15 t
XR10S.51	10000 kg	5100	4500 mm	6000 mm	1150 kg	ca. 15 t

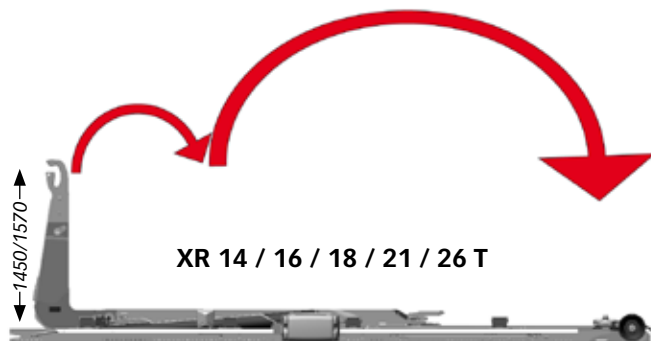


# XR Power range T-model





# XR14 - 26T



The XR T hooklift with tilting horizontal movement has a smartly designed turning pivot point on the hookarm which minimises wearing parts and increases power when moving the hookarm under load.

- PLC-operated control system Simple control system structure
- Revolutionary options: Automatic sequence control, fast speed and friction relief for frictionless body change
- All options can be chosen independently to match your precise requirements
- High quality top coat painting at factory as standard
- High strength, together with low weight, maximises the payload potential of your vehicle

Model	Lifting and tipping capacity	Equipment length, G-Length	min. Body length	max. Body length	System weight	GVW of the vehicle
XR14T.41	14000 kg	4080	3400 mm	5100 mm	1610 kg	18-19 t
XR14T.43	14000 kg	4250	3600 mm	5300 mm	1640 kg	18-19 t
XR14T.46	14000 kg	4580	3800 mm	5600 mm	1670 kg	18-19 t
XR14T.51	14000 kg	5080	4300 mm	6100 mm	1770 kg	18-19 t
XR16T.46	16000 kg	4580	3800 mm	5600 mm	1750 kg	18 / 25 t
XR16T.51	16000 kg	5080	4300 mm	6100 mm	1850 kg	18 / 25 t
XR16T.55	16000 kg	5480	4700 mm	6500 mm	1990 kg	18 / 25 t
XR18T.46	18000 kg	4580	3800 mm	5600 mm	1780 kg	25-26 t
XR18T.51	18000 kg	5080	4300 mm	6100 mm	1880 kg	25-26 t
XR18T.55	18000 kg	5480	4700 mm	6500 mm	1990 kg	25-26 t
XR21T.46	21000 kg	4580	3700 mm	5600 mm	2380 kg	25-26 t
XR21T.51	21000 kg	5080	4200 mm	6100 mm	2460 kg	25-26 t
XR21T.55	21000 kg	5480	4700 mm	6500 mm	2540 kg	25-26 t
XR21T.59	21000 kg	5850	5000 mm	6900 mm	2610 kg	25-26 t
XR21T.61	21000 kg	6080	5200 mm	7100 mm	2630 kg	25-26 t
XR26T.51	26000 kg	5080	4200 mm	6100 mm	2690 kg	32-35 t
XR26T.55	26000 kg	5480	4700 mm	6500 mm	2760 kg	32-35 t
XR26T.59	26000 kg	5850	5000 mm	6900 mm	2870 kg	32-35 t
XR26T.61	26000 kg	6080	5200 mm	7100 mm	2900 kg	32-35 t

# XR Power range S-model



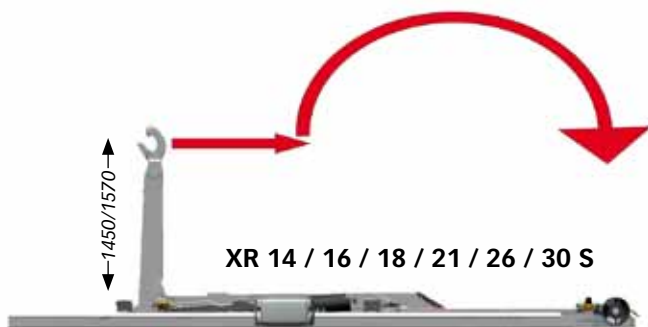


# XR14 - 30S

What gives the Hiab Multilift XR Power range hooklifts true versatility and makes them experts on all demountable load handling operations is the state-of-the-art PLC-operated (Programmable Logic Controls) control system, which controls the hooklift's functions. Thanks to PLC it is possible to add a number of new, unique functions to the hooklift to ease the daily load handling tasks. The control system provides a one of a kind simplicity in demountable body handling through the combination of automatic and manual control, as well as comfortable and fast operation. All new options are easily accessible from one cab-mounted control unit. The new features facilitate the daily tasks of a load handling professional.

The XR S hooklift features a sliding mechanism that offers a low operating radius during the loading / unloading cycle.

- PLC-operated control system Simple control system structure
- Revolutionary options: Automatic sequence control, fast speed and friction relief for frictionless body change
- All options can be chosen independently to match your precise requirements
- High quality top coat painting at factory as standard
- High strength, together with low weight, maximises the payload potential of your vehicle



# XR Power range S-model

## XR14 - 18S

Model	Lifting and tipping capacity	Equipment length, G-Length	min. Body length	max. Body length	System weight	GVW of the vehicle
XR14S.41	14000 kg	4080	3500 mm	5100 mm	1600 kg	18-19 t
XR14S.43	14000 kg	4270	3700 mm	5300 mm	1630 kg	18-19 t
XR14S.46	14000 kg	4580	4000 mm	5600 mm	1660 kg	18-19 t
XR14S.51	14000 kg	5080	4300 mm	6100 mm	1760 kg	18-19 t
XR14S.53	14000 kg	5360	4500 mm	6400 mm	1840 kg	18-19 t
XR14S.56	14000 kg	5560	4500 mm	6600 mm	1860 kg	18-19 t
XR16S.46	16000 kg	4580	4000 mm	5600 mm	1740 kg	18 / 25 t
XR16S.51	16000 kg	5080	4300 mm	6100 mm	1840 kg	18 / 25 t
XR16S.53	16000 kg	5360	4500 mm	6400 mm	1920 kg	18 / 25 t
XR16S.56	16000 kg	5560	4500 mm	6600 mm	1940 kg	18 / 25 t
XR16S.59	16000 kg	5860	4700 mm	6900 mm	1990 kg	25 t
XR16S.61	16000 kg	6080	4900 mm	7100 mm	2010 kg	25 t
XR18S.46	18000 kg	4580	4000 mm	5600 mm	1770 kg	25-26 t
XR18S.51	18000 kg	5080	4300 mm	6100 mm	1870 kg	25-26 t
XR18S.53	18000 kg	5360	4500 mm	6400 mm	1960 kg	25-26 t
XR18S.56	18000 kg	5560	4500 mm	6600 mm	2000 kg	25-26 t
XR18S.59	18000 kg	5860	4700 mm	6900 mm	2020 kg	25-26 t
XR18S.61	18000 kg	6080	4900 mm	7100 mm	2040 kg	25-26 t





# XR Power range S-model

## XR21 - 30S

Model	Lifting and tipping capacity	Equipment length, G-Length	min. Body length	max. Body length	System weight	GVW of the vehicle
XR21S.46	21000 kg	4580	4000 mm	5600 mm	2290 kg	25-26 t
XR21S.51	21000 kg	5080	4300 mm	6100 mm	2380 kg	25-26 t
XR21S.53	21000 kg	5360	4500 mm	6400 mm	2470 kg	25-26 t
XR21S.56	21000 kg	5560	4500 mm	6600 mm	2500 kg	25-26 t
XR21S.59	21000 kg	5860	4700 mm	6900 mm	2530 kg	25-26 t
XR21S.61	21000 kg	6080	4900 mm	7100 mm	2550 kg	25-26 t
XR21S.63	21000 kg	6310	5100 mm	7300 mm	2590 kg	25-26 t
XR26S.51	26000 kg	5080	4300 mm	6100 mm	2550 kg	32-35 t
XR26S.53	26000 kg	5360	4500 mm	6400 mm	2650 kg	32-35 t
XR26S.56	26000 kg	5560	4500 mm	6600 mm	2680 kg	32-35 t
XR26S.59	26000 kg	5860	4700 mm	6900 mm	2730 kg	32-35 t
XR26S.61	26000 kg	6080	4900 mm	7100 mm	2750 kg	32-35 t
XR26S.63	26000 kg	6310	5100 mm	7300 mm	2790 kg	32-35 t
XR26S.70	26000 kg	6980	5800 mm	8000 mm	3080 kg	32-35 t
XR26S.78	26000 kg	7780	6600 mm	8800 mm	3230 kg	32-35 t
XR30S.53	30000 kg	5360	4500 mm	6400 mm	2770 kg	35-41 t
XR30S.56	30000 kg	5560	4500 mm	6600 mm	2790 kg	35-41 t
XR30S.59	30000 kg	5860	4700 mm	6900 mm	2850 kg	35-41 t
XR30S.61	30000 kg	6080	4900 mm	7100 mm	2870 kg	35-41 t
XR30S.63	30000 kg	6310	5100 mm	7300 mm	2910 kg	35-41 t



The indicated body lengths consider at present current DIN 30722. Body length can vary in different markets. With the min. body lengths the demountable body can be tilted partly only conditionally. Exact G-Length can be +20mm/-40mm from dimension in the table depending on the hook height and body standard. Hook height can vary in different markets.



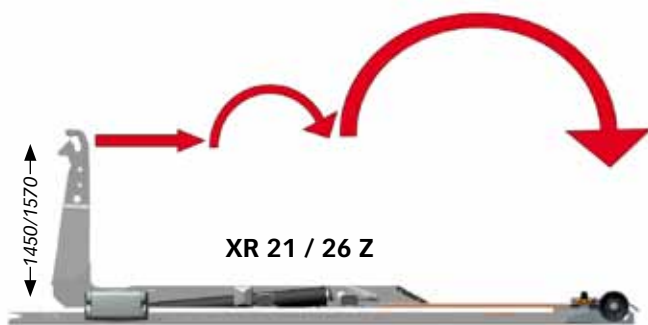
# XR Power range Z-model



# XR21 + 26Z

The new Hiab Multilift XR21Z and XR26Z hooklifts, topped with industry-leading control functions, are designed to maximise the truck's versatility through the hooklifts' ability to handle demountable bodies of various lengths. The XR Z series hooklifts have an extremely low lifting angle during body change, when both sliding and tilting functions are being used, which makes it an ideal solution for low headroom applications.

- PLC-operated control system Simple control system structure
- Revolutionary options: Automatic sequence control, fast speed and friction relief for frictionless body change
- All options can be chosen independently to match your precise requirements
- High quality top coat painting at factory as standard
- High strength, together with low weight, maximises the payload potential of your vehicle



Model	Lifting and tipping capacity	Equipment length, G-Length	min. Body length	max. Body length	System weight	GVW of the vehicle
XR21Z.51	21000 kg	5080	3200 mm	6100 mm	2690 kg	25-26 t
XR21Z.53	21000 kg	5320	3500 mm	6300 mm	2720 kg	25-26 t
XR21Z.56	21000 kg	5610	3800 mm	6600 mm	2770 kg	25-26 t
XR21Z.59	21000 kg	5880	4000 mm	6900 mm	2810 kg	25-26 t
XR21Z.61	21000 kg	6110	4300 mm	7100 mm	2840 kg	25-26 t
XR26Z.51	26000 kg	5080	3200 mm	6100 mm	2720 kg	32-35 t
XR26Z.53	26000 kg	5310	3500 mm	6300 mm	2750 kg	32-35 t
XR26Z.56	26000 kg	5610	3800 mm	6600 mm	2800 kg	32-35 t
XR26Z.59	26000 kg	5880	4000 mm	6900 mm	2840 kg	32-35 t
XR26Z.61	26000 kg	6110	4300 mm	7100 mm	2870 kg	32-35 t
XR26Z.65	26000 kg	6430	4600 mm	7400 mm	2950 kg	32-35 t

The indicated body lengths consider at present current DIN 30722. Body length can vary in different markets. With the min. body lengths the demountable body can be tilted partly only conditionally. Exact G-Length can be +20mm/-40mm from dimension in the table depending on the hook height and body standard. Hook height can vary in different markets.



# LH Basic range

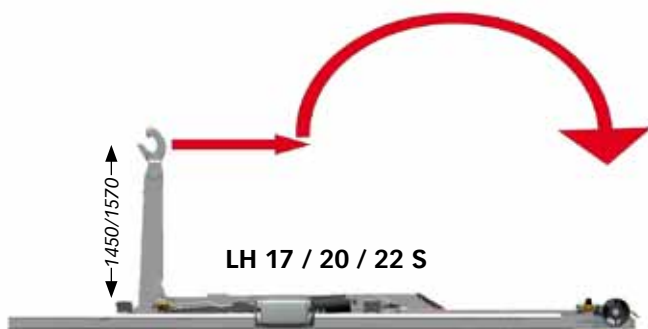




# LH17S - LH22S

LH Basic Range hooklift models feature a sliding mechanism that offers a lower operating radius in the loading/unloading cycle. The LH hooklifts have a low weight, low installation height and high operational speed. The optimised construction guarantees a high net payload as well as fast tipping and body change.

- Balanced high-quality robot welds
- Steel castings in high stress areas make the system more rigid, increase lifetime and enable weight savings to be made
- Pneumatic controls
- Safety interlocks guarantee safe operations on hydraulics
- Automatic tipping frame and subframe locking
- Floating of main cylinders with soft lowering of the body onto chassis guarantee better driving comfort
- Proportional main cylinder movements
- Compact and secure JIC connectors on hydraulics



Model	Lifting and tipping capacity	Equipment length, G-Length	min. Body length	max. Body length	System weight	GVW of the vehicle
LH17S.49	17000 kg	4870	4000 mm	5900 mm	1960 kg	19-25 t
LH17S.56	17000 kg	5600	4700 mm	6600 mm	2080 kg	19-25 t
LH20S.51	20000 kg	5100	4200 mm	6100 mm	1950 kg	26 t
LH20S.53	20000 kg	5380	4400 mm	6300 mm	2000 kg	26 t
LH20S.56	20000 kg	5600	4500 mm	6600 mm	2050 kg	26 t
LH22S.56	22000 kg	5600	4700 mm	6600 mm	2600 kg	26 t
LH22S.59	22000 kg	5880	4700 mm	6900 mm	2620 kg	26 t
LH22S.61	22000 kg	6100	4900 mm	7100 mm	2640 kg	26 t

# Skiploader



# SLT142 + 192

The Hiab Multilift skiploader is specially designed to provide rapid turn-around times on skip handling operations. Its ability to pick up a container horizontally with no lifting angle and to lift it over obstacles such as fences makes it a very fast and effective solution. The fact that the Hiab Multilift skiploader requires only a small space for operating, together with its compatibility with shorter containers and wheelbase trucks, make it ideally suited to urban work.

- Telescopic arms
- Adjustable and removable container stops in front and guide blocks
- Two angled and individually controllable support legs increase stability
- Double-acting lifting and support leg cylinders with in-cab optical warning system
- Dual or individual control of telescopic arms
- Pneumatically operated tipping hook with automatic hook safety latch
- Cylinders with load holding valves and hose failure valves
- Various optional extras

Model	Lifting and tipping capacity	Equipment length, G-Length	min. Body length	max. Body length	System weight	GVW of the vehicle
SLT 142	14000 kg	3255-4255	5 cbm	20 cbm	2900 kg	18-19 t
SLT 192	19000 kg	3500-4500	5 cbm	20 cbm	3800 kg	25-26 t

# Cablelift





# CLF

Hiab Multilift CLF cablelifts' low installation height and light construction stand for unparalleled performance and high net payload. Thanks to the unique hydraulic solutions, operating winch and tipping unit at the same time goes easily, even with a full load. The strong lightweight high-tensile steel construction maximises your payloads. The cablelift range is available with rear tipping as well as a 3-way tipping system.

- Equal tension between lifting cables prevents twisting pressures on vehicle body
- Middle and front container locking systems, together with the unique rear locking system, ensure complete security during transportation
- Freewheeling of empty bodies for fast turn-around
- Advanced joystick control ensures precise and proportional tipping and winch operations
- Easy integration of various additional hydraulic applications in control system
- Wide range of accessories

Model	Lifting and tipping capacity	Equipment length, G-Length	min. Body length	max. Body length	System weight	GVW of the vehicle
CLF190	14000 kg	3450-5460	4000 mm	6500 mm	ca. 1350 kg	18-19 t
CLF190 3W	14000 kg	4000-5470	4000 mm	6200 mm	ca. 1900 kg	18-19 t
CLF 260	20000 kg	3450-6460	4000 mm	7500 mm	ca. 1600 kg	25-26 t
CLF 260 3W	20000 kg	4700-6470	4000 mm	7000 mm	ca. 2100 kg	25-26 t
CLF 320	25000 kg	3450-7025	4000 mm	8000 mm	ca. 1800 kg	32-36 t
CLF 320 3W	25000 kg	4700-6970	4000 mm	7000 mm	ca. 2300 kg	32-36 t

# Hiab Multilift demountable load handling systems



# One truck, many tasks

All Hiab Multilift demountables are based on the same fundamental idea which has been the basis for our business for more than 60 years: One truck, many tasks. The Finnish brothers Terho patented the world's first demountable system in 1947. The simple but ingenious invention meant that the truck could be kept on the road at all times, enabling the diverse use of the vehicle. This led to unparalleled flexibility in diverse load handling operations.

**Today** the whole transportation chain is facing tighter and tighter efficiency demands. The life cycle costs of the equipment need to be kept under strict control. This reflects above all on the reliability of the equipment and the availability of service and spare parts. This also means that load handling solutions must be customised to specific application needs without compromises in safety and usability standards.

**Hiab Multilift systems** are renowned for their reliability, user-friendliness and safety of operation. Consequently, they are being used in many applications all around the world. Our customers range from one-truck owner-operators to large transportation companies, fleet operators and rental companies; they include local authorities, construction companies, as well as waste handling and recycling businesses. Demountables are also being used in fire brigades and military applications all around the world.

**Our global expertise** and industry know-how combined with our understanding of local operating conditions means that we can offer the right solutions - whatever the size of the customer's business or their application needs - anywhere in the world.

**Cargotec** improves the efficiency of cargo flows on land and at sea – wherever cargo is on the move. Cargotec's daughter brands Hiab, Kalmar and MacGregor are recognised leaders in cargo and load handling solutions around the world. Cargotec's global network is positioned close to customers and offers extensive services that ensure the continuous, reliable and sustainable performance of equipment. [www.cargotec.com](http://www.cargotec.com)

ООО «Карготек РУС», Москва  
Краснопресненская наб. 12  
офис 1807  
123610 Москва  
Тел. +7 495 258 16 01  
факс +7 495 967 07 79  
[www.hiab.ru](http://www.hiab.ru)

ООО «Карготек РУС», Санкт-Петербург  
Наб. Обводного канала 118 А  
лит. Ж, офис 503  
190005 Санкт-Петербург  
Тел. +7 812 337 54 50  
факс +7 812 337 54 51  
[www.hiab.ru](http://www.hiab.ru)

