

Hiab XS 111 HiDuo

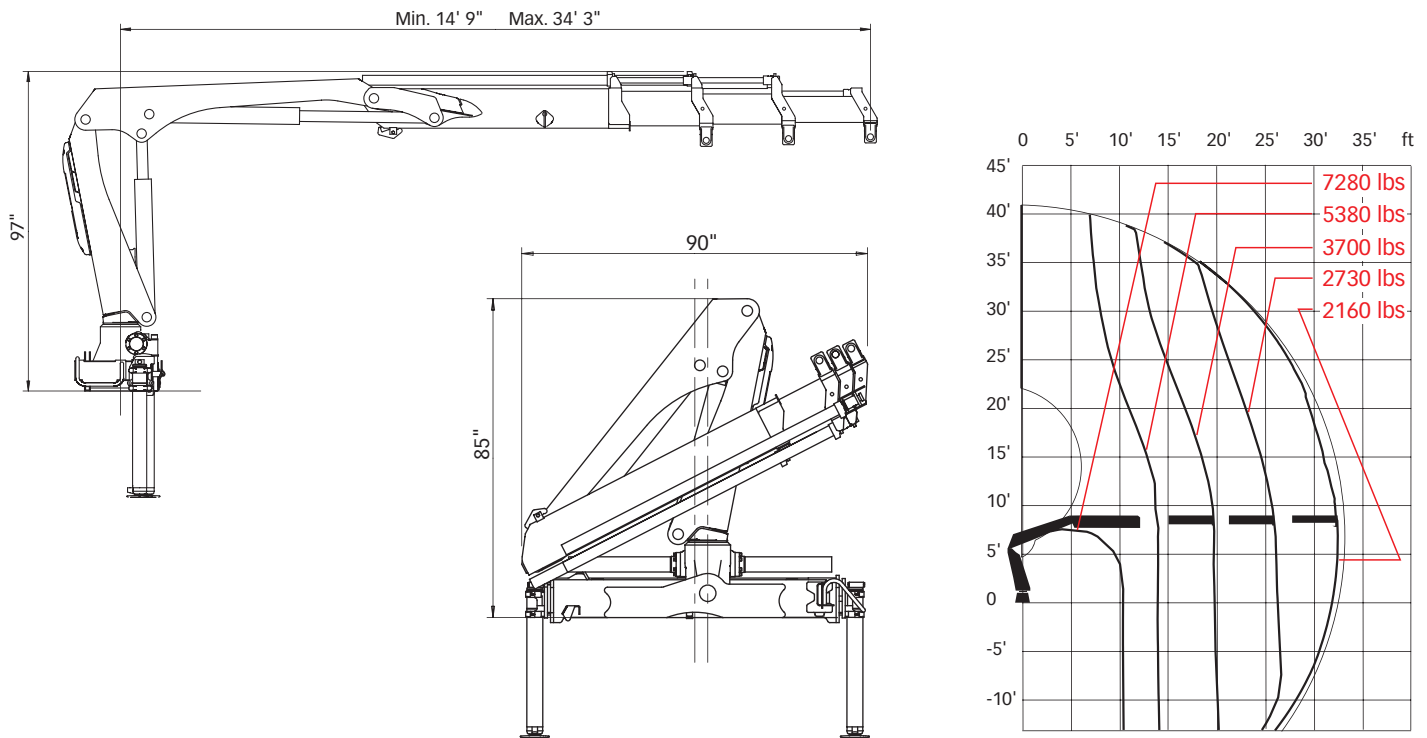
Capacity 81,100 ft-lbs



Hiab XS 111 HiDuo Basic data

Technical data	B-1 HiDuo	B-2 HiDuo	B-3 HiDuo	E-3 HiDuo	E-4 HiDuo	E-5 HiDuo
Max. lifting capacity (ft-lbs)	81,110	77,420	74,530	75,970	73,390	71,400
Outreach - hydraulic extensions	19' 8"	26' 3"	33' 2"	33' 6"	40' 9"	48' 0"
Outreach - manual extensions	33' 2"	39' 8"	39' 8"	47' 1"	54' 7"	54' 11"
Outreach / Lifting capacity, standard (lbs)	7' 7" / 10,470	9' 2" / 8,490	10' 2" / 7,280	7' 10" / 9,590	8' 2" / 8,930	8' 6" / 8,380
	13' 9" / 5,910	13' 9" / 5,640	14' 1" / 5,380	14' 1" / 5,380	14' 5" / 5,070	14' 9" / 4,810
	19' 0" / 4,280	19' 4" / 4,010	19' 4" / 3,700	20' 0" / 3,660	20' 4" / 3,400	20' 8" / 3,130
	-	25' 3" / 3,040	25' 7" / 2,730	26' 7" / 2,650	26' 11" / 2,380	27' 3" / 2,160
	-	-	32' 2" / 2,160	33' 6" / 2,070	33' 10" / 1,850	34' 1" / 1,590
	-	-	-	-	40' 8" / 1,500	41' 0" / 1,280
	-	-	-	-	-	47' 11" / 1,060
Slewing angle	406°	406°	406°	406°	406°	406°
Height in folded position	85"	85"	85"	85"	85"	85"
Width in folded position	85"	89"	90"	94"	94"	98"
Installation space needed	27"	27"	31"	31"	28"	32"
Weight - "standard" crane without stabilizers (lbs)	2,380	2,650	2,870	3,330	3,570	3,815
Weight - stabilizer equipment (lbs)	310 - 630	310 - 630	310 - 630	310 - 630	310 - 630	310 - 630

Hiab XS 111 B-3 HiDuo



Disclaimer. Hiab cranes have been built to meet the highest standards of safety and service life and have been thoroughly tested. Strength calculations for this model have been carried out in accordance with EN13001 in fatigue class S2. Cargotec's certified Quality Assurance System complies with ISO 9001. Some of the items in our literature may be extra equipment. Certain applications may require an official permit. We reserve the right to change technical specifications without prior notice. Hiab cranes produced for EU-countries are CE-marked and comply with the European Standard EN 12999.

Cargotec improves the efficiency of cargo flows by offering solutions for the loading and unloading of goods on land and at sea – wherever cargo is on the move. Cargotec's main daughter brands for cargo handling Hiab, Kalmar and MacGregor are global market leaders in their fields. www.cargotec.com