

Hiab XS 288 CLX

Capacity 25 tm

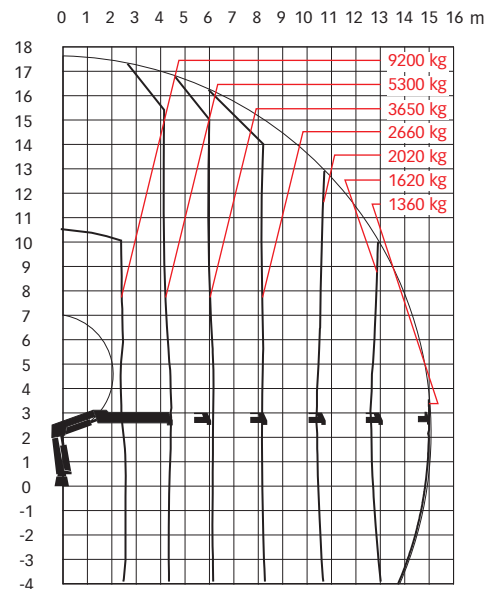
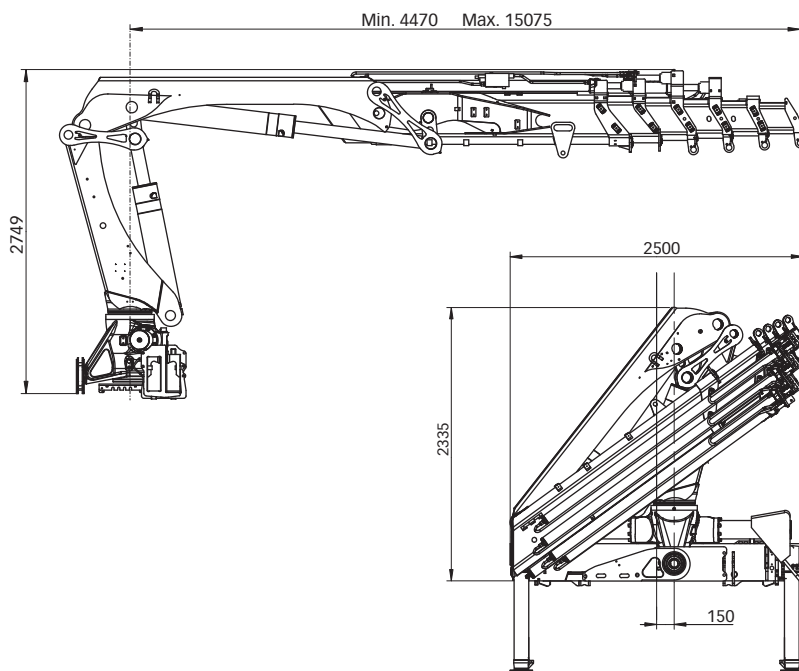


Hiab XS 288 CLX Basic data

Technical data

	EP-2 CLX	EP-3 CLX	EP-4 CLX	EP-5 CLX
Max. lifting capacity (kNm)	248	242	237	233
Outreach - hydraulic extensions (m)	8.0	10.3	12.7	15.1
Outreach - manual extensions (m)	12.5	14.9	17.2	17.2
Outreach / Lifting capacity, ABC standard (m / kg)	2.6 / 9400	2.6 / 9200	2.5 / 9300	2.5 / 9200
	4.2 / 6000	4.3 / 6500	4.4 / 5500	4.5 / 5300
	5.9 / 4250	6.0 / 4050	6.1 / 3850	6.2 / 3650
	7.9 / 3200	8.0 / 2980	8.1 / 2800	8.2 / 2660
	-	10.2 / 2340	10.3 / 2160	10.4 / 2020
	-	-	12.6 / 1760	12.7 / 1620
	-	-	-	15.0 / 1360
Slewing angle	420°	420°	420°	420°
Height in folded position (mm)	2335	2335	2335	2335
Width in folded position (mm)	2429	2495	2495	2500
Installation space needed (mm)	1070	1131	1166	1166
Weight - "standard" crane without stabilizers (kg)	2600	2800	2970	3110
Weight - stabilizer equipment (kg)	402 - 487	402 - 487	402 - 487	402 - 487

Hiab XS 288 EP-5 CLX



Disclaimer. Hiab cranes have been built to meet the highest standards of safety and service life and have been thoroughly tested. Strength calculations for this model have been carried out in accordance with EN13001 in fatigue class S2. Cargotec's certified Quality Assurance System complies with ISO 9001. Some of the items in our literature may be extra equipment. Certain applications may require an official permit. We reserve the right to change technical specifications without prior notice. Hiab cranes produced for EU-countries are CE-marked and comply with the European Standard EN 12999.

Cargotec improves the efficiency of cargo flows by offering solutions for the loading and unloading of goods on land and at sea – wherever cargo is on the move. Cargotec's main daughter brands for cargo handling Hiab, Kalmar and MacGregor are global market leaders in their fields. www.cargotec.com