

Marine Selfunloaders

Cement handling system



TECHNICAL INFORMATION

*Adamas
Amethyst
Aquamarine*

MacGregor cement system

Three cement carriers feature custom designed MacGregor self-unloading systems to maximise cargo flow efficiency

In 2004, Cargotec was awarded contracts for the supply of selfloading/unloading equipment for three cement carriers under construction in Turkey. The first contract was for the 9,000 dwt cement carrier, *Adamas*, and this was followed by two further contracts for the 6,000 dwt vessels, *Amethyst* and *Aquamarine*.

All three vessels are equipped with a MacGregor cement-handling system for both mechanical and pneumatic loading, rated at 800t/h and 600t/h respectively. The pneumatic unloading rate for *Adamas* is 500t/h and 350t/h for *Amethyst* and *Aquamarine*.

System description

The installed cargo handling equipment is designed for maximum flexibility with loading systems intended for both mechanical and pneumatic operation and pneumatic unloading.

Loading

The ship is loaded mechanically at a single point via flexible bellows from the shore or pneumatically via pipelines. The loaded cement is then distributed to the cargo holds by airslides on deck.

Unloading

The cargo is unloaded pneumatically using a MacGregor blow pump system via one or two pipelines to shore silos.

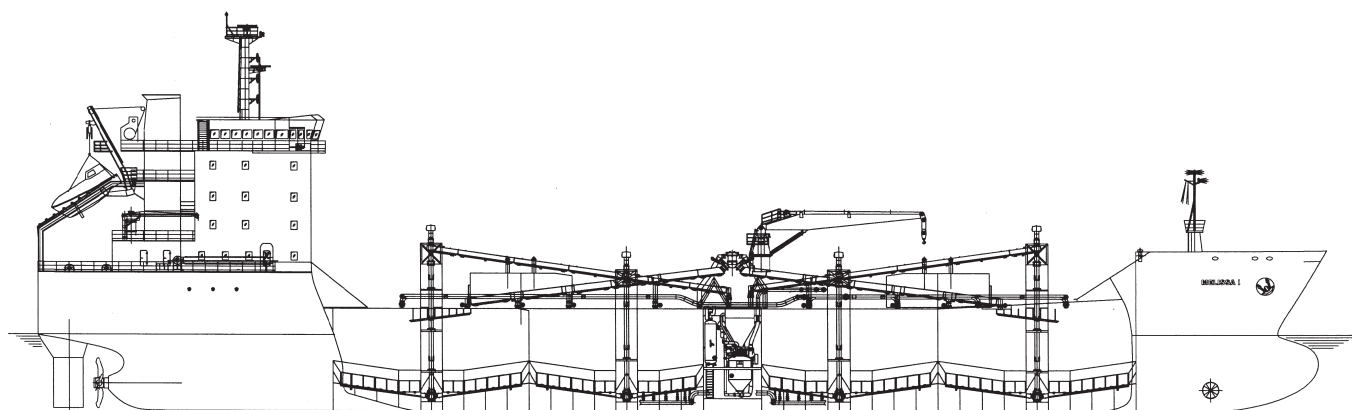
Vessels' dimensions

9,000 dwt/6,000 dwt

Length, overall	123.5m/112.0m
Breadth	19.6m/16.3m
Depth to main deck	9.8m/8.7m
Draft	7.5m/6.2m
Deadweight	9,000 dwt/ 6,000 dwt

System data

Rated loading capacity	
Mechanically	800t/h
Pneumatically	600t/h
Rated unloading capacity	
Pneumatically	500t/h/350t/h



Design principle of the three cement self-unloading systems

7/04SU02/03/04-AUG2011



Lloyd's Register Quality Assurance certifies that the Quality Management System for Cargotec Marine is ISO 9001:2008 compliant.

Cargotec improves the efficiency of cargo flows on land and at sea – wherever cargo is on the move. Cargotec's daughter brands Hiab, Kalmar and MacGregor are recognised leaders in cargo and load handling solutions around the world.

MacGregor is the global market-leading brand in marine cargo handling and offshore load-handling solutions. Customer-driven MacGregor engineering and service solutions for the maritime transportation industry and the offshore load-handling and naval logistics markets are used onboard merchant ships, offshore support vessels, and in ports and terminals.

Published by Cargotec Corporation. Copyright © Cargotec August 2011. All rights reserved. No part of this publication may be reproduced, stored, photocopied, recorded or transmitted without permission of the copyright owner.



Cargotec Sweden AB
Marine Selfunloaders

Gesällgatan 7, P.O. Box 914
SE-745 25 Enköping, Sweden
tel. +46 (0)171 232 00
susales.enk@cargotec.com
www.cargotec.com