



EFFER 120 D

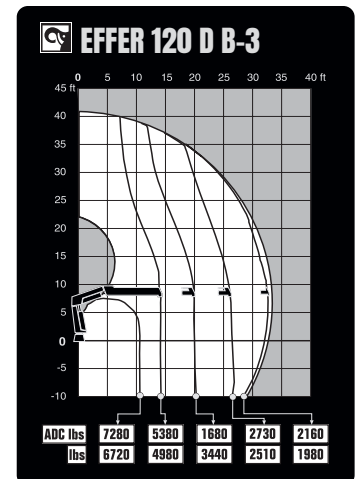
TECHNICAL SPECIFICATION

EFFER 120 D

TECHNICAL DATA	120 D B-1	120 D B-2	120 D B-3	120 D E-4	120 D E-5
Max. lifting capacity (ft-lbs)	81 131	77 444	74 493	73 387	71 396
Outreach, hydraulic extensions (ft)	19' 0.3"	25' 3.1"	32' 1.8"	40' 8.2"	47' 10.8"
Outreach, manual extensions (ft)	25' 3.1"	32' 1.8"	38' 8.6"	47' 6.9"	54' 9.5"
Outreach / lifting capacity (ft-lbs)	7' 6.6" - 10472.0	9' 2.2" - 8487.8	10' 2.0" - 7275.3	8' 2.4" - 8928.7	8' 6.4" - 8377.6
	13' 9.4" - 5908.4	13' 9.4" - 5643.8	14' 1.3" - 5379.3	14' 5.2" - 5070.6	14' 9.2" - 4806.1
	19' 0.3" - 4277.0	19' 4.3" - 4012.4	19' 4.3" - 3703.8	20' 4.1" - 3395.1	20' 8.0" - 3130.6
	-	25' 3.1" - 3042.4	25' 7.1" - 2733.7	26' 10.8" - 2381.0	27' 2.8" - 2160.5
	-	-	32' 1.8" - 2160.5	33' 9.5" - 1851.9	34' 1.4" - 1587.3
	-	-	-	40' 8.2" - 1499.1	41' 0.1" - 1278.7
-	-	-	-	47' 10.8" - 1058.2	
Slewing angle (°)	190 - 406	190 - 406	190 - 406	190 - 406	190 - 406
Height in folded position (in)	7' 1.4"	7' 1.4"	7' 1.4"	7' 1.4"	7' 1.4"
Width in folded position (in)	7' 1.0"	7' 4.6"	7' 6.4"	7' 10.2"	8' 1.9"
Installation space needed (in)	2' 5.5" - 2' 7.7"	2' 5.5" - 2' 7.7"	2' 6.9" - 2' 10.3"	2' 5.5" - 2' 7.7"	2' 7.8" - 2' 10.6"
Weight, "standard" crane without stabilizers (lbs)	2381	2646	2866	3572	3814
Weight, stabilizer equipment (lbs)	668	668	668	668	668
Weight, jib (lbs)	-	-	-	-	-

Features

- D-Drive remote control system
- VSL: Variable Stability Limit (Optional)
- LSS-V: Load Stability System
- SAF: Semi Automatic Folding
- HiConnect
- nDurance™ nano technology coating
- 1 Year warranty - All inclusive
- 3 Year warranty - Structural



Hiab is a leading provider of smart and sustainable load handling solutions. We are committed to delivering the best customer experience every day with the most engaged people and partners. Hiab's premium equipment includes HIAB, EFFER and ARGOS loader cranes, MOFFETT and PRINCETON truck mounted forklifts, LOGLIFT forestry cranes, JONSERED recycling cranes, MULTILIFT skiploaders and hooklifts, GALFAB roll-off cable hoists, and tail lifts under the ZEPRO, DEL and WALTCO brands. As the industry pioneer, Hiab continues to make load handling smarter, safer and more sustainable to build a better tomorrow.



Hiab USA, Inc.
 12233 Williams Rd
 Perrysburg, 43551 OH USA
 tel. +419 482 6000

effer.com - hiab.com

EFFER is part of Hiab