

Specification Sheet for WB Range

Company Name: _____ Date: _____

Order Number: _____ Quantity required: _____

Deliver Lift Collect Lift from Del Delivery Date Required: _____

Delivery Address

Company Name: _____ Street Address: _____

Post Code: _____ City: _____

Vehicle Details

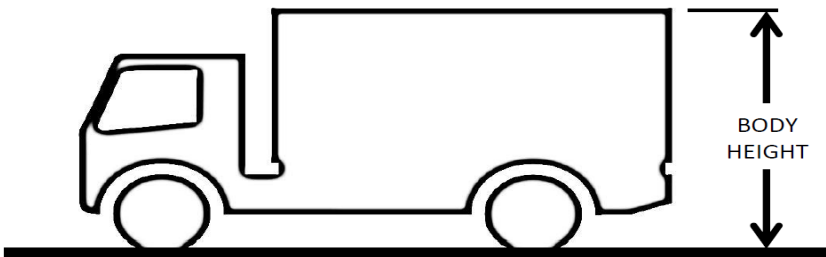
Rigid Trailer Chassis Mass: _____

Vehicle Voltage:

12v 24v

Tip Height Measurements:

Measure the height of the top of the vehicle body to the ground, and check that the lift supplied is suitable for this height.



Note that the lift can be used to tip into the side of the body, in these cases the 'body height' dimension will be from the ground to the bottom of the hole in the side of the body, into which the bin will tip.

A tolerance of $\pm 25\text{mm}$ is acceptable on the tip heights.

Tail Lift Details

Lift Capacity:

150kg 300kg

Drive:

PTO Operated Pack Operated*

*** POWER PACK OPERATED LIFTS ARE FOR OCCASIONAL USE ONLY, MAX 6 LIFTS EVERY 45 MINUTES.**

Tip Height/ Model Options:

150KG Options:

- 1670mm – 1740mm (WB150-550) 1970mm – 2040mm (WB150-700) 2290mm – 2350mm (WB150-850)
- 2400mm – 2490mm (WB150-914) 2790mm – 2850mm (WB150-1091) 3260mm – 3320mm (WB150-1330)
- 3350mm – 3400mm (WB150-1372)

300KG Options:

- 3260mm – 3320mm **(WB300-1330)*** 3350mm – 3400mm **(WB300-1372)***

***WB300 Lifts come with a fixed bin which is 150kg of the safe working load. Only Hydraulic Roof available.**

Roof requirement:

Roof Mechanism required: Yes No Lid Arms only

Mechanical Roof (Power Pack Operated Lifts)

- 730mm Wide x 1107mm Deep. – **Only available on WB150 Lift with tip heights of 1670mm – 2850mm**

Hydraulic Roof (PTO Operated Lifts). Please select Roof size below:

- 1150mm Wide x 1125mm Deep – **Only available on WB300 Lifts**
- 1200mm Wide x 1625mm Deep - **Only available on WB300 Lifts**
- 1490mm Wide x 1995mm Deep – **Only available on WB150 Lift with tip heights of 2290mm – 3400mm**
- 1695mm Wide x 2095mm Deep – **Only available on WB150 Lift with tip heights of 2290mm – 3400mm**

Roof Magnet required (Only available on Hydraulic Roof):

Yes No

Roof Hinge Type (Only available on Hydraulic Roof):

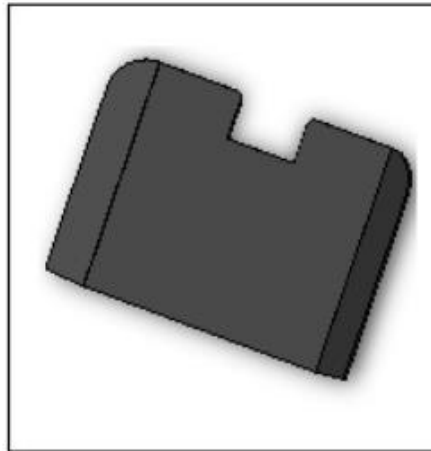
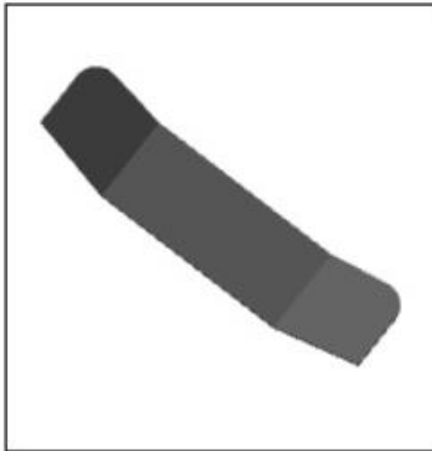
90 Degree Angle Straight

Chute Type required: (N/A on WB300 Lifts)

Standard

Deep (Food Pod)

Extended (Wide)



Control Setup:

Fixed Control

Wanderlead

Two handed control station: (Not Available with Wanderlead Control)

Yes

No

Battery & Earth cables required (Power Pack operated Lifts only):

28' Cables (standard)

35' Cables

56' Cables

Cab Warning System:

None

Visual

Audible

Warranty:

2 Year Warranty

3 Year Warranty

4 Year Warranty

5 Year Warranty

To be completed by DEL

Part Number of Lift: _____

Price of each Lift: _____