

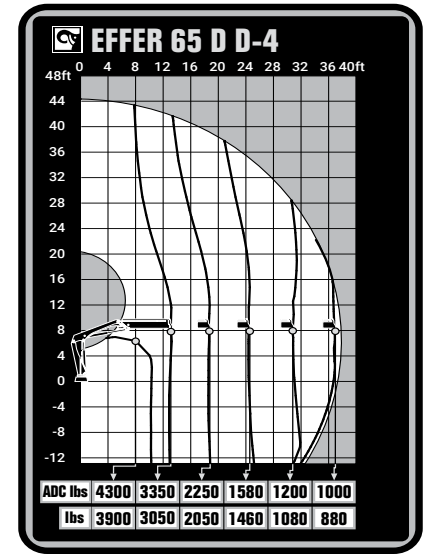


EFFER 65 D

TECHNICAL SPECIFICATION

EFFER 65 D

TECHNICAL DATA	65 D D-2	65 D D-3	65 D D-4
Max. lifting capacity (ft-lbs)	47 204	44 991	42 778
Outreach, hydraulic extensions (ft)	23' 7.5"	30' 6.1"	36' 5.0"
Outreach, manual extensions (ft)	30' 6.1"	37' 0.9"	-
Outreach / lifting capacity (ft-lbs)	8' 2.4" - 5599.7 12' 9.5" - 3659.7 17' 8.6" - 2601.5 23' 7.5" - 1940.1 -	9' 6.2" - 4717.9 13' 1.5" - 3439.2 18' 0.5" - 2381.0 23' 11.4" - 1763.7 30' 6.1" - 1366.9 -	10' 2.0" - 4277.0 12' 9.5" - 3351.0 18' 0.5" - 2248.7 23' 11.4" - 1587.3 30' 2.2" - 1190.5 36' 5.0" - 992.1
Slewing angle (°)	410	410	410
Height in folded position (in)	6' 2.8"	6' 2.8"	6' 2.8"
Width in folded position (in)	6' 7.3"	7' 0.6"	7' 1.4"
Installation space needed (in)	2' 1.6" - 2' 4.5"	2' 1.6" - 2' 4.5"	2' 1.6" - 2' 4.5"
Weight, "standard" crane without stabilizers (lbs)	1918	2095	2249
Weight, stabilizer equipment (lbs)	231.5 - 352.7	231.5 - 352.7	231.5 - 352.7
Weight, jib (lbs)	-	-	-



Features

- D-Drive remote control system
- VSL: Variable Stability Limit (Optional)
- LSS-V: Load Stability System
- 1 Year warranty - All inclusive
- 3 Year warranty - Structural
- HiConnect
- nDurance™ nano technology coating
- SAF: Semi Automatic Folding



Hiab is a leading provider of smart and sustainable load handling solutions. We are committed to delivering the best customer experience every day with the most engaged people and partners. Hiab's premium equipment includes HIAB, EFFER and ARGOS loader cranes, MOFFETT and PRINCETON truck mounted forklifts, LOGLIFT forestry cranes, JONSERED recycling cranes, MULTILIFT skiploaders and hooklifts, GALFAB roll-off cable hoists, and tail lifts under the ZEPRO, DEL and WALTCO brands. As the industry pioneer, Hiab continues to make load handling smarter, safer and more sustainable to build a better tomorrow.



Hiab USA, Inc.
12233 Williams Rd
Perrysburg, 43551 OH USA
tel. +419 482 6000

effe.com - hiab.com

EFFER is part of Hiab