

EFFER SUPER HEAVY RANGE CRANES A POWERFUL SOLUTION

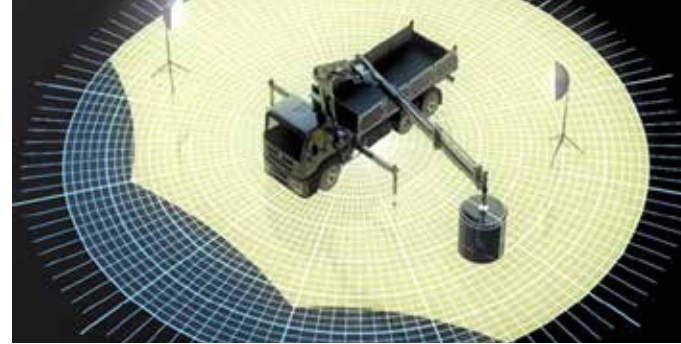
EFFER ADDRESSES YOUR INDUSTRY PAIN POINTS

EFFER loader cranes are stronger, tougher, and smarter, easily adapting to the ever changing needs of the material handling industry. With reliable support, intelligent services, and a growing number of connected solutions, EFFER loader cranes will maximize performance by offering the right solution for loading, unloading, or moving materials. Like no other truck mounted equipment provider, EFFER understands the specific requirements and realities of any industry and will help secure a safer, more efficient operation with reduced downtime while maximizing revenue.

- SAFETY**
 EFFER's industry leading technology provides world class safety features that keep operators safe and in control, minimizing risk to individuals or the environment. With the smart technology solutions of EFFER's loader cranes, human driven errors and unsafe operations are reduced.
- EFFICIENCY**
 EFFER's advanced technology drives the performance of the equipment resulting in superior operation efficiencies. EFFER's class-leading products can not only be used by operators of different skill levels, but are also helpful with everchanging resources, supporting business efficiency and increasing productivity.
- DOWNTIME**
 EFFER's renowned reliability combined with industry leading safety features and control systems is proven to reduce downtime, while our nationwide service network ensures that equipment is maintained with minimal oversight.
- TRAINING**
 Training and educating operators takes time, but EFFER's advanced control systems and technology allows customers to manage their resources in the best way, whether the operator is highly experienced or a new employee without losing too much time.
- RELIABILITY**
 EFFER loader cranes are the industry leaders in the area of reliability. Our premium engineering and cutting edge operation management features ensure optimum longevity and service life of your equipment. All backed up with the most comprehensive warranty in the market.
- REVENUE**
 EFFER loader cranes provide many cost benefits that are ideal for businesses with repetitive, efficient operations. With a reliable design, quality materials, game changing smart technology, and industry specific innovation, investing in EFFER equipment provides a total package for any industry.

HiConnect™

HiConnect™ is a web-based dashboard that displays insights on equipment usage, location, time in operation, idle time, and productivity level. By enabling new insights, it helps you to further increase efficiency, productivity, and safety. HiConnect is the latest technology in terms of connectivity capabilities. Being able to remotely access data is key to maximizing your business with facts instead of assumptions. HiConnect maintains constant contact with all units, giving fleet managers the ability to stop unsafe behavior and usage before an incident happens. With the ability to view service history and plan upcoming services, your fleet has minimum downtime and increases daily efficiencies.



FEATURES THAT OPTIMIZE OPERATIONS

- EFFER's VARIABLE STABILITY LIMIT SYSTEM (VSL+)** monitors the truck's stability by registering the extension of the stabilizers and monitoring the pressures at each leg to determine the maximum safe capacity of the crane, allowing for higher capacities in situations where the legs are not able to be fully extended.
- EFFER Super Heavy range cranes** are managed by the SPACEvo control system, which builds on an open and modular platform with many features available. The Overload Protection (OLP) delivers an unprecedented level of safety to operations without reducing performance. When approaching an overload condition, the crane gives an audible and visual signal at 90% and will stop all radius increasing functions once full capacity has been reached.
- AUTOMATIC SPEED CONTROL (ASC)** reduces dynamic loading by progressively reducing the speed of the crane when the capacity is between 80% and 100%, preventing operators from performing unsafe, abrupt movements.
- PUMP FLOW DISTRIBUTION (PFD)** provides smooth and precise crane operations by equally dividing oil flow among the functions.
- Equipped with the **COMBIDRIVE 4** remote control, the operator benefits from a lightweight remote combined to bright displays visible in all light conditions.
 - Optional Confirmed View
 - Personalized operator settings
- LOAD STABILITY SYSTEM (LSS-V)** provides smoother, more precise vertical boom motions. If an operator performs a hard stop while raising or lowering a load, the LSS-V system controls the boom movement, minimizing the bouncing of the boom and load, while preventing load damage and unnecessary stress on the crane's components for a longer working life and durability.
- SEMI AUTOMATIC FOLDING (SAF)** simplifies the stowing process (folding and unfolding) reducing it to a single-lever operation, protecting the crane and the truck from damage.
- nDurance™** finish is an anti-corrosion paint system using nano technology for maintaining a rust-free reliable crane.

Our extensive stock of parts at our **REGIONAL DISTRIBUTION CENTER** ensures next-day delivery on almost all items, reducing downtime and saving you money. The same team you trust to deliver high-quality, premium products to your exact requirements can also be trusted to keep you moving.



EFFER's **COMPREHENSIVE WARRANTY** exceeds the industry's standard terms because our products are designed to last longer and provide many years of reliable service.

EFFER's innovative design elements have the working **ENVIRONMENT** in mind. EFFER cranes have a high performing control system, which saves on fuel consumption. Our Valve 200, when combined with a variable displacement piston pump, provides the highest level of speed, precision, and efficiency available. On average, a EFFER crane with the V200 and variable pump will consume 325 gallons less diesel fuel per year compared to other models using fixed displacement pumps.

Hiab is a leading provider of smart and sustainable load handling solutions. We are committed to delivering the best customer experience every day with the most engaged people and partners. Hiab's premium equipment includes HIAB, EFFER and ARGOS loader cranes, MOFFETT and PRINCETON truck mounted forklifts, LOGLIFT forestry cranes, JONSERED recycling cranes, MULTILIFT skiploaders and hooklifts, GALFAB roll-off cable hoists, and tail lifts under the ZEPRO, DEL and WALTCO brands. As the industry pioneer, Hiab continues to make load handling smarter, safer and more sustainable to build a better tomorrow.

effer.com - hiab.com

EFFER is part of Hiab



Hiab Inc Usa
 12233 Williams Road
 Perrysburg, OH 43551 USA
 tel. +419 482 6000

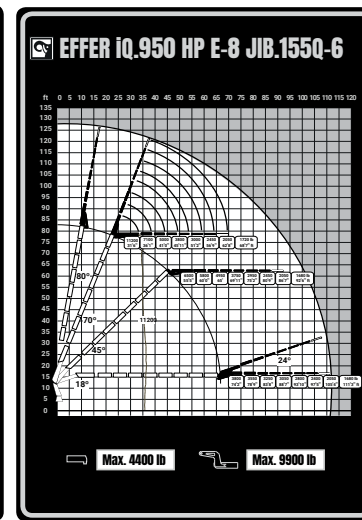
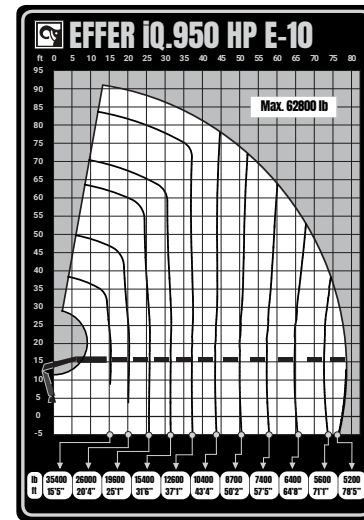


PRODUCT RANGE

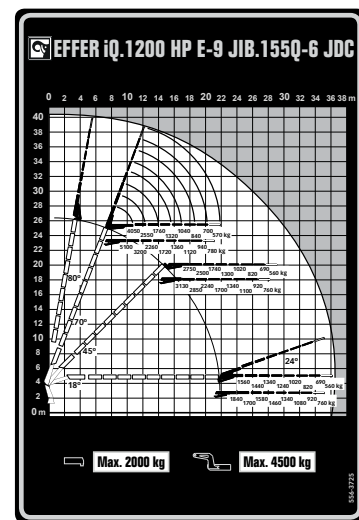
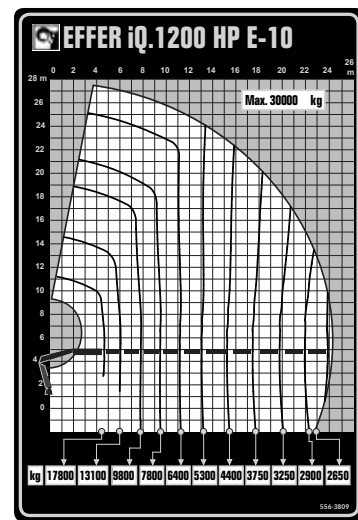
SUPER HEAVY RANGE CRANES



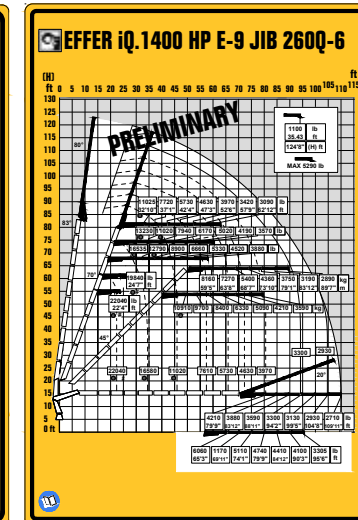
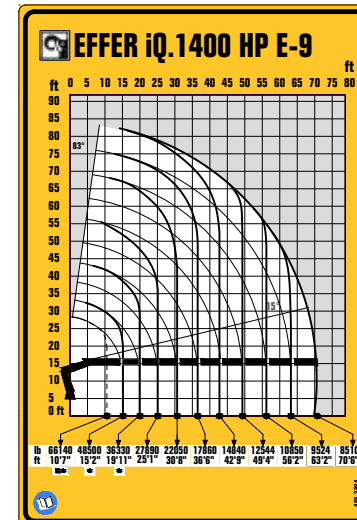
iQ.950 HP



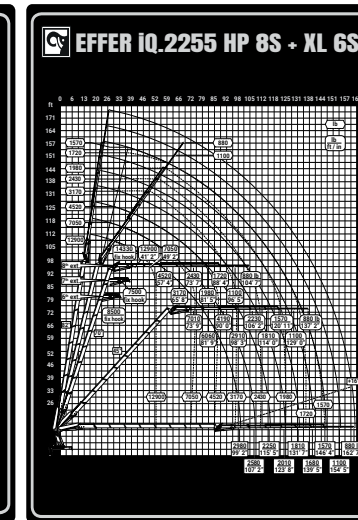
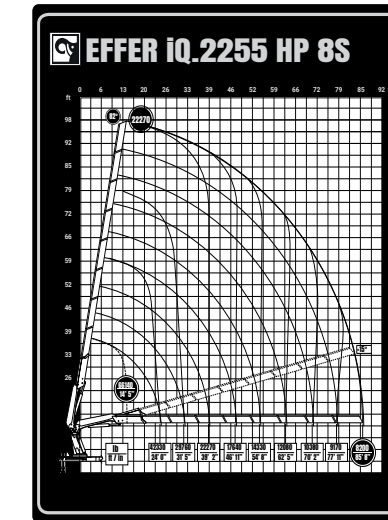
iQ.1200 HP



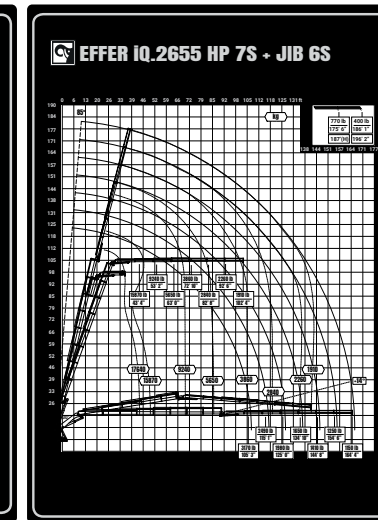
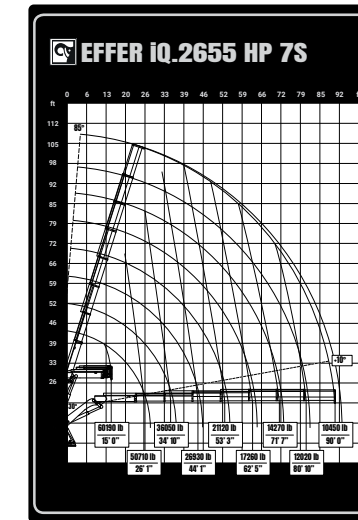
iQ.1400 HP



iQ.2255 HP



iQ.2655 HP



In today's highly competitive market, businesses need to make quick, precise, and efficient operations to gain a distinct edge over competitors. Operators across North America have acclaimed EFFER super heavy range cranes as the best to handle all types of products, from precast concrete, septic tanks, oil field equipment, and many others. Designed to be reliable, strong, and low-weight, these cranes have the perfect combination of precision, power, and control to increase operational efficiencies. With versatile mounts offered, from tractor-mounted, trailer-mounted, or rear-mounted crane configurations, there are many options available to provide the solution that will maximize productivity and bring a prompt return on your investment.

TECHNICAL DATA	iQ.950 HP E-10	iQ.950 HP E-8 JIB 155Q-6
Lifting capacity (ft-lbs)	547 640	556 120
Maximum outreach - Lifting capacity (lbs)	78' 5" - 5 160	105' 4" - 2 030
Weight, including stabilizers (lbs)	20 150	23 270
Control system	SPACEevo remote control system	SPACEevo remote control system

TECHNICAL DATA	iQ.1200 HP E-10	iQ.1200 HP E-9 JIB 155Q-6	iQ.1400 HP E-9	iQ.1400 HP E-9 JIB 260Q-6
Lifting capacity (ft-lbs)	604 730	608 490	726 190	730 910
Maximum outreach - Lifting capacity (lbs)	78' 0" - 5 840	101' 0" - 2 250	70' 5" - 8 160	110' 2" - 2 620
Weight, including stabilizers (lbs)	20 739	23 860	29 880	32 410
Control system	SPACEevo remote control system	SPACEevo remote control system	SPACEevo remote control system	SPACEevo remote control system

TECHNICAL DATA	iQ.2255 HP 8S	iQ.2255 HP 8S JIB XL6S	iQ.2655 HP 7S	iQ.2655 HP 7S JIB 6S
Lifting capacity (ft-lbs)	1 015 930	1 020 650	1 325 450	1 330 170
Maximum outreach - Lifting capacity (lbs)	85' 8" - 8 200	162' 7" - 880	90' 0" - 10 450	164' 4" - 1 150
Weight, including stabilizers (lbs)	39 900	47 180	67 830	75 110
Control system	SPACEevo remote control system	SPACEevo remote control system	SPACEevo remote control system	SPACEevo remote control system