

TECHNICAL SPECIFICATIONS
HIAB X-HIDUO 046

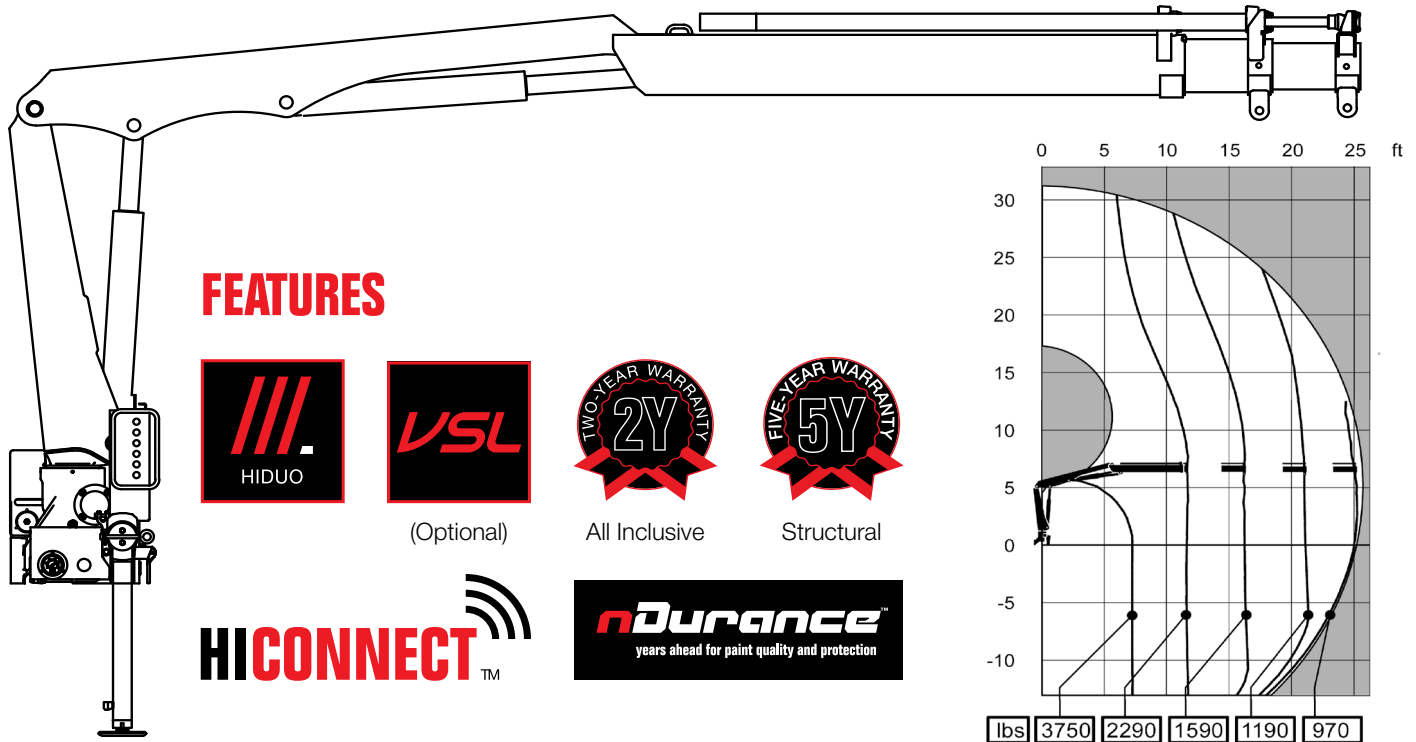


BUILT TO PERFORM



HIAB X-HIDUO 046 BASIC DATA

TECHNICAL DATA	X-HIDUO 046 B-1	X-HIDUO 046 B-2	X-HIDUO 046 D-3	X-HIDUO 046 D-4
Max. lifting capacity (ft-lbs)	26 630	25 030	27 280	26 630
Outreach, hydraulic extensions (ft)	16' 1"	21' 0"	25' 7"	30' 10"
Outreach, manual extensions (ft)	26' 3"	26' 3"	30' 10"	-
Outreach / lifting capacity (ft-lbs)	7' 3" - 3 790 11' 2" - 2 380 15' 5" - 1 720 - - -	7' 3" - 3 700 11' 2" - 2 250 15' 5" - 1 590 20' 0" - 1 190 - -	7' 3" - 3 790 11' 6" - 2 290 15' 9" - 1 630 20' 4" - 1 230 25' 3" - 970 -	8' 10" - 3 000 11' 6" - 2 160 15' 9" - 1 500 20' 4" - 1 100 25' 3" - 860 29' 10" - 730
Slewing angle (°)	380	380	380	380
Height in folded position (in)	63	63	63	63
Width in folded position (in)	74	75	74	74
Installation space needed (in)	21	21	23	24
Weight, "standard" crane without stabilizers (lbs)	990	1 100	1 190	1 270
Weight, stabilizer equipment (lbs)	120	120	120	120



Disclaimer. Hiab cranes have been built to meet the highest standards of safety and service life and have been thoroughly tested. Strength calculations for this model have been carried out in accordance with EN13001 in fatigue class S2. Cargotec's certified Quality Assurance System complies with ISO 9001. Some of the items in our literature may be extra equipment. Certain applications may require an official permit. We reserve the right to change technical specifications without prior notice. Hiab cranes produced for EU-countries are CE marked and comply with the European Standard EN12999.

Hiab is the world's leading provider of on-road load handling equipment. Our high performance product range includes loader cranes, forestry and recycling cranes, demountables, truck mounted forklifts and tail lifts. We aim to set the industry benchmark for customer satisfaction by providing products and services that meet customer needs globally.

www.hiab.us.com
Hiab is part of Cargotec.
www.cargotec.com

Hiab USA Inc
12233 Williams Road
Perrysburg, OH 43551 USA
tel. +419 482 6000
fax. +419 482 6001

