

JONSERED 1100RS

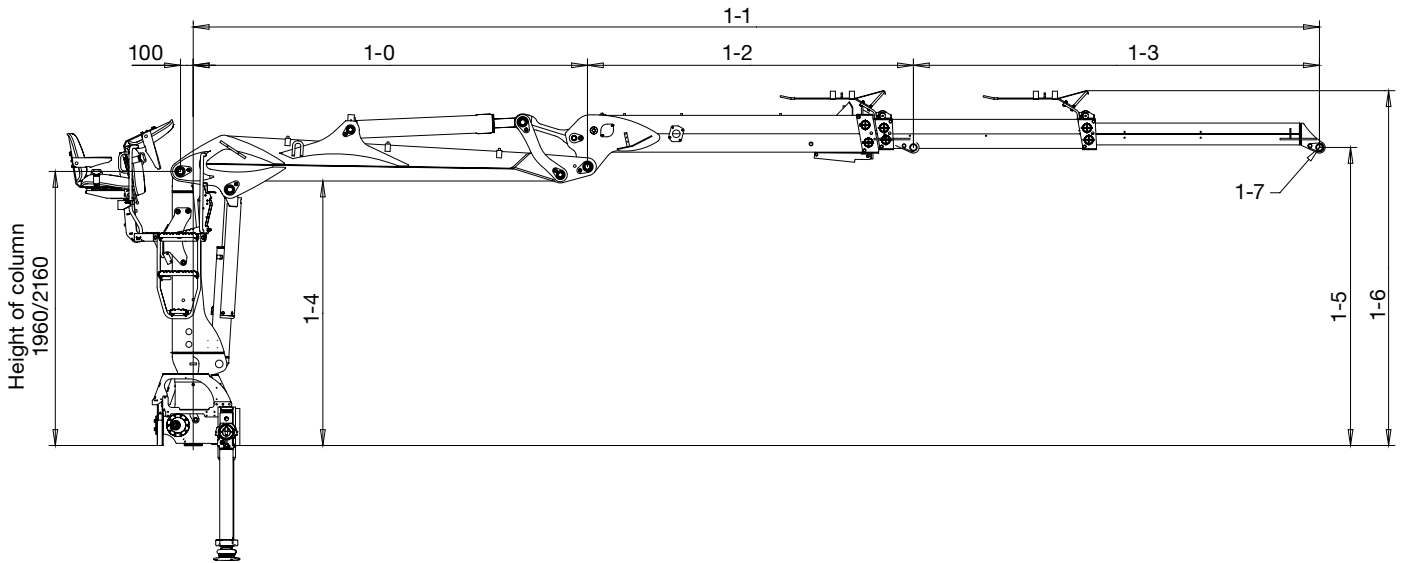


JONSERED 1100RS BASIC DATA

Technical data	J1100RS71i HPL	J1100RS79i HPL	J1100RS84i HPL	J1100RS89i HPL	J1100RS97i HPL	J1100RS 102i HPL
Max. lifting capacity (kNm)	109	106	105	104	100	97
Max outreach (m)	7.11	7.91	8.41	8.86	9.66	10.16
Hydraulic boom extensions (m)	1.58	1.58	1.58	3.15	3.15	3.15
Outreach / lifting capacity (m/kg)	3.0 / 3300 4.0 / 2650 5.0 / 2220 6.0 / 1840 7.1 / 1480	3.0 / 3420 4.0 / 2590 5.0 / 2120 6.0 / 1780 7.0 / 1520 7.9 / 1280	3.0 / 3100 4.0 / 2550 5.0 / 2080 6.0 / 1760 7.0 / 1500 8.4 / 1180	4.0 / 2500 5.0 / 2120 6.0 / 1760 7.0 / 1500 8.0 / 1300 8.8 / 1140	4.0 / 2440 6.0 / 1680 8.0 / 1230 9.65 / 960	4.0 / 2340 6.0 / 1600 8.0 / 1180 10.15 / 880
Slewing system	Single	Single	Single	Single	Single	Single
Slewing angle (°)	415	415	415	415	415	415
Slewing torque, gross (kNm)	21.9	21.9	21.9	21.9	21.9	21.9
Max. slope viable at full capacity (°)	8	8	8	8	8	8
Max. working pressure (MPa)	26	26	26	26	26	26
Recommended oil flow – fixed pump (l/min max)	120	120	120	120	120	120
Recommended oil flow – variable displacement pump (l/min max)	160	160	160	160	160	160
Power needed at rec. oil flow - fixed pump (kW)	58	58	58	58	58	58
Power needed at rec. oil flow - variable displacement pump (kW)	77	77	77	77	77	77
Road width (mm)	2520 (max)	2520 (max)	2520 (max)	2520 (max)	2520 (max)	2520 (max)
Weight - crane with high seat and stabilizer equipment (kg)	2010	2050	2075	2200	2240	2265
Weight - crane with high seat and stabilizer equipment B5200 (kg)	2125	2165	2190	2315	2355	2380
Weight - crane with high seat on side and stabilizer equipment (kg)	2010	2050	2075	2200	2240	2265
Weight - crane with high seat on side and stabilizer equipment B5200 (kg)	2125	2165	2190	2315	2355	2380
Weight - crane with single stand-up platform and stabilizer equipment (kg)	2040	2080	2105	2230	2270	2295
Weight - crane with single stand-up platform and stabilizer equipment B5200 (kg)	2155	2195	2220	2345	2385	2410
Low loader body, weight reduction (kg)	-20	-20	-20	-20	-20	-20

*With outside/inside hose routing

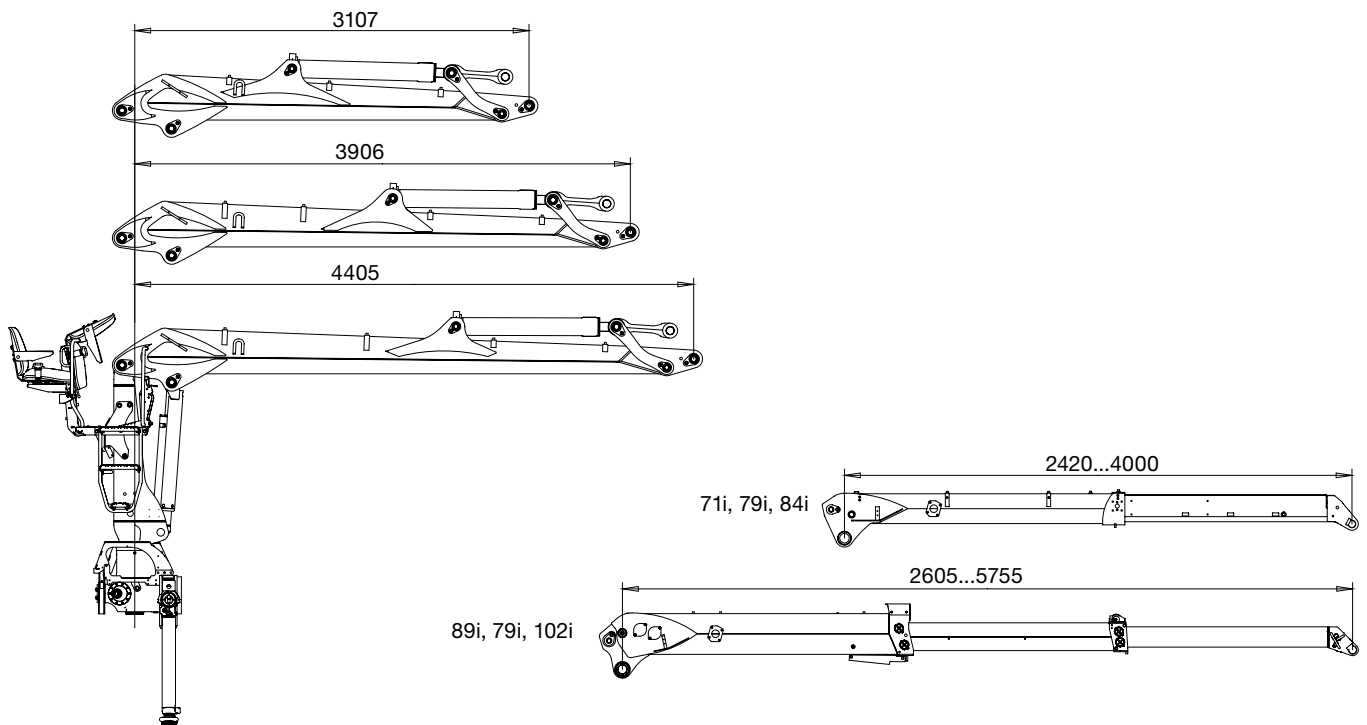
JONSERED 1100RS



Measurements		1-1		COLUMN 1960					COLUMN 2160			HPL	
MODEL	1-0	1 - 1 min	1 - 1 max	1-2	1-3	1-4	1-5	1-6	1-4	1-5	1-6		1-7
71i	3107	5527	7107	2420	1580	1885	2104	2414	2085	2304	2614	Ø40, B=184	x
79i	3906	6326	7906	2420	1580	1890	2112	2418	2090	2312	2618	Ø40, B=184	x
84i	4405	6825	8405	2420	1580	1892	2115	2419	2092	2315	2619	Ø40, B=184	x
89i	3107	5712	8862	2605	3150	1885	2149	2512	2085	2349	2712	Ø40, B=184	x
97i	3906	6511	9661	2605	3150	1890	2158	2520	2090	2358	2720	Ø40, B=184	x
102i	4405	7010	10160	2605	3150	1892	2161	2524	2092	2361	2724	Ø40, B=184	x

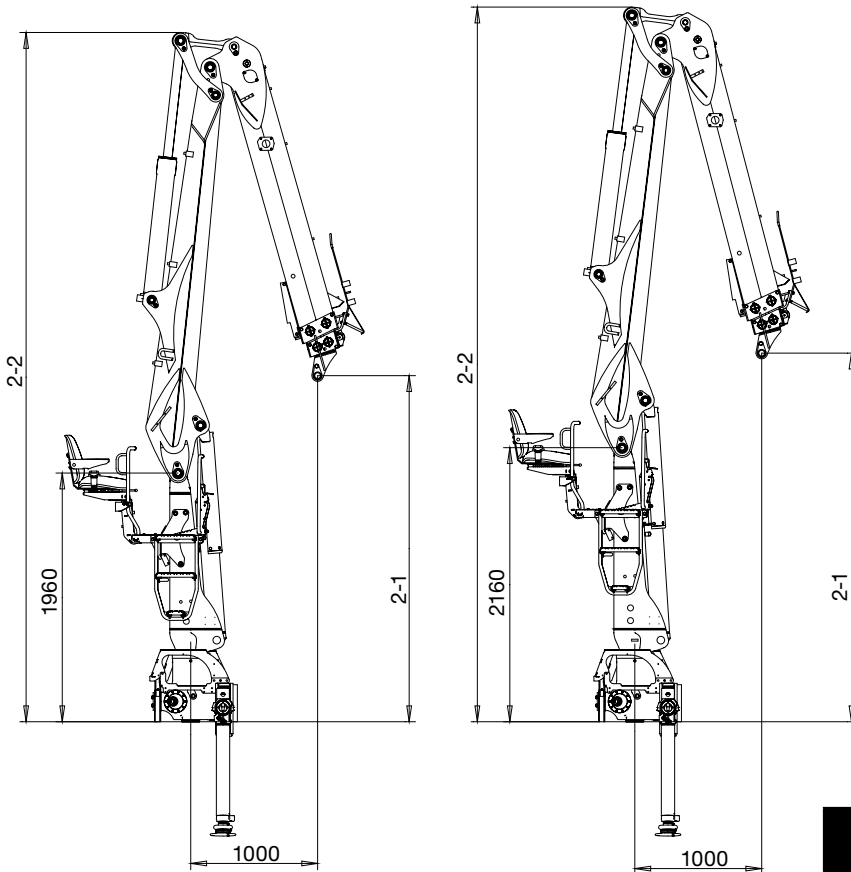
First booms

Outreaches = Available boom combinations



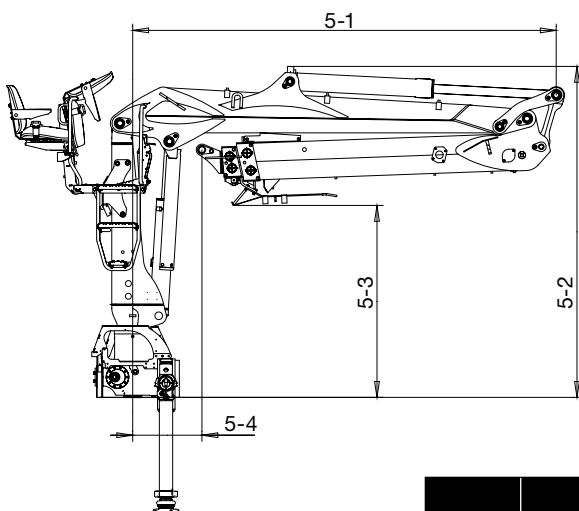
JONSERED 1100RS

Close in



Model	COLUMN 1960		COLUMN 2160		HPL
	2-1	2-2	2-1	2-2	
71i	2865	5421	3065	5621	x
79i	3613	6224	3813	6424	x
84i	4084	6722	4284	6922	x
89i	2667	5426	2867	5626	x
97i	3419	6228	3619	6428	x
102i	3892	6725	4092	6925	x

Folded

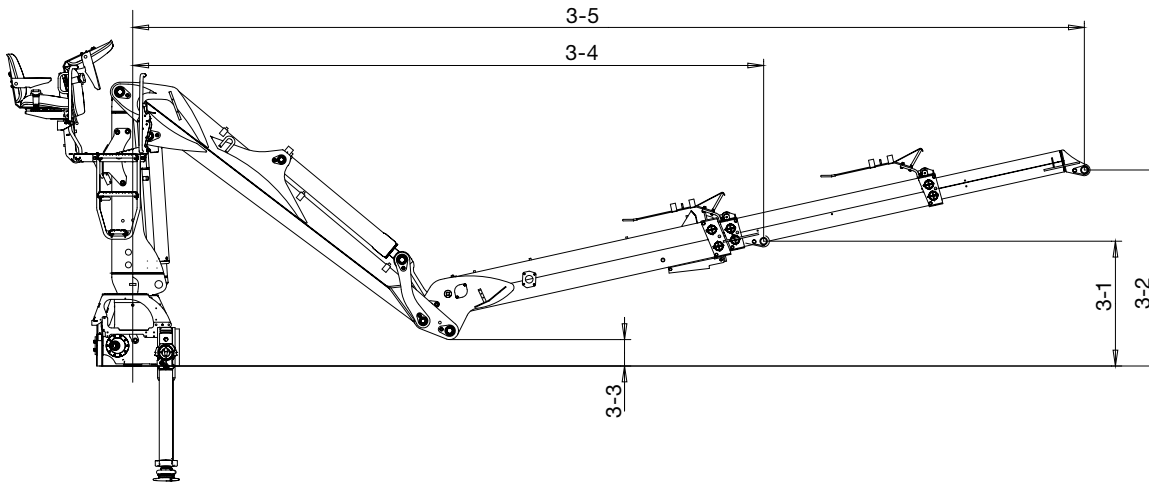


Model	COLUMN 1960				COLUMN 2160				HPL
	5-1	5-2	5-3	5-4	5-1	5-2	5-3	5-4	
71i	3405	2408	1559	691	3405	2608	1759	691	x
79i	4203	2391	1567	1489	4203	2591	1767	1489	x
84i	4702	2384	1571	1989	4702	2584	1771	1989	x
89i	3404	2408	1402	509	3404	2608	1602	509	x
97i	4201	2391	1407	1308	4201	2591	1607	1308	x
102i	4700	2384	1410	1808	4700	2584	1608	1808	x

JONSERED 1100RS

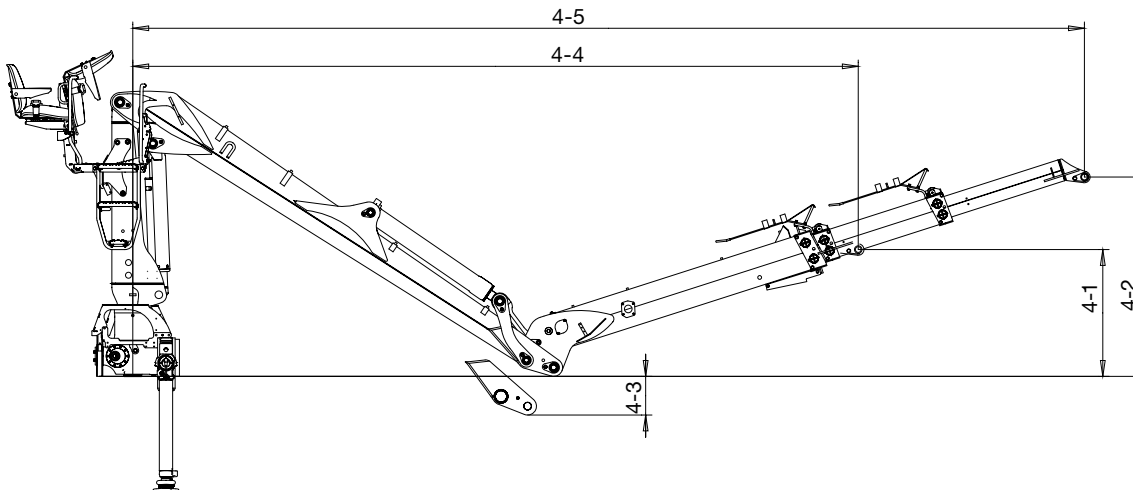
Parked view

First boom 3107



Model	COLUMN 1960					COLUMN 2160					HPL
	3-1	3-2	3-3	3-4	3-5	3-1	3-2	3-3	3-4	3-5	
71i	1288	1807	323	4949	6441	907	1249	212	4837	6379	x
89i	1338	2102	323	5131	7500	934	1426	212	5023	7500	x

First boom 3906 or 4405

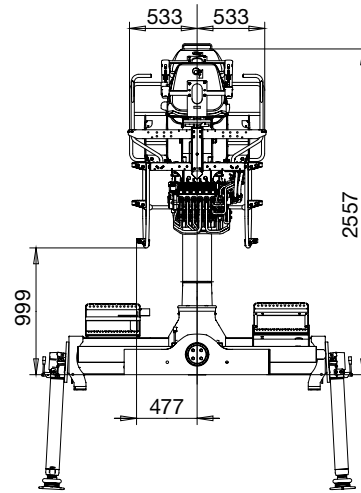
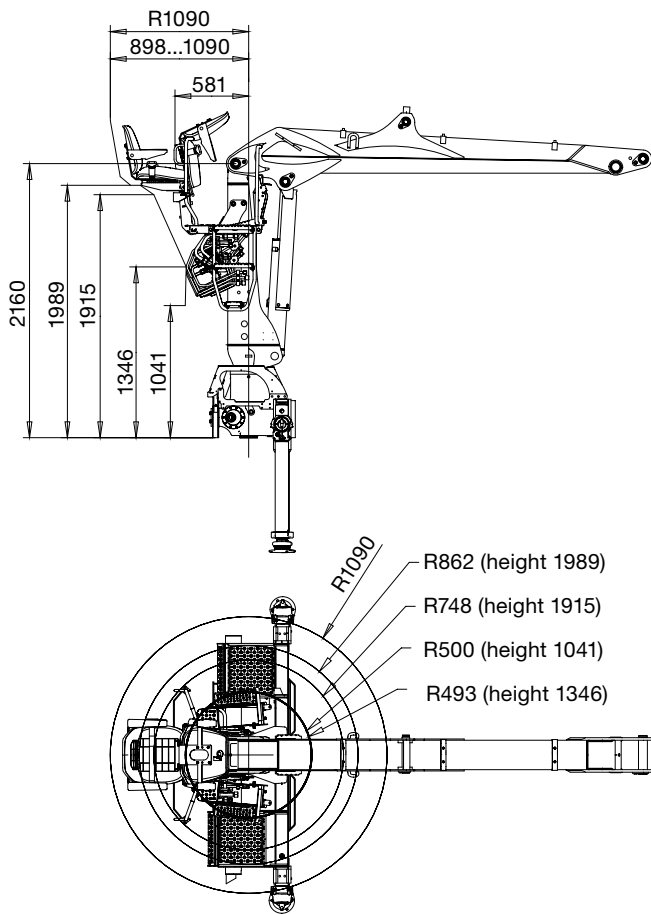


Model	COLUMN 1960					COLUMN 2160					HPL
	4-1	4-2	4-3	4-4	4-5	4-1	4-2	4-3	4-4	4-5	
79i	1040	1608	116	5652	7127	910	1392	305	5590	7094	x
84i	1181	1807	389	6143	7500	1073	1638	625	6096	7500	x
97i	1095	1695	116	5832	7500	955	1466	305	5772	7500	x
102i	1247	1760	389	6319	7500	1131	1592	625	6275	7500	x

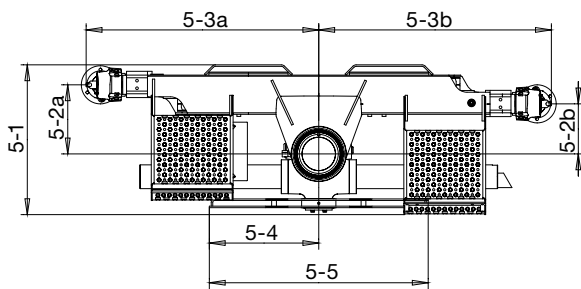
JONSERED 1100RS

High seat - center

Column 2160

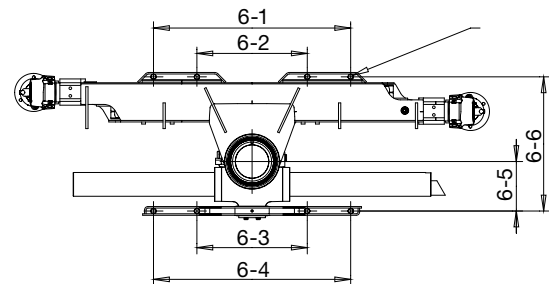


Base



Base	5-1	5-2a	5-2b	5-3a	5-3b	5-4	5-5
STANDARD	690	263	263	1222	1222	575	1150
STD-WIDE	690	263	263	1222	1222	733	1466
B5200	787	363	263	1222	1222	575	1150

Fastening

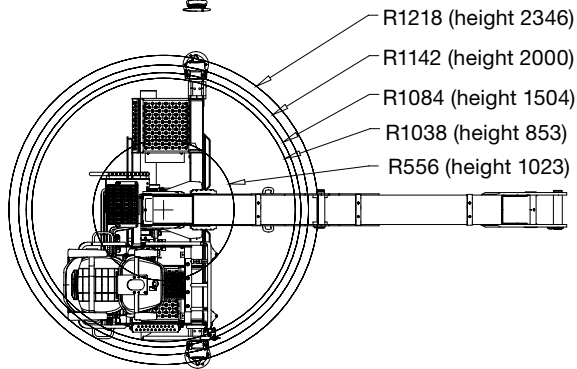
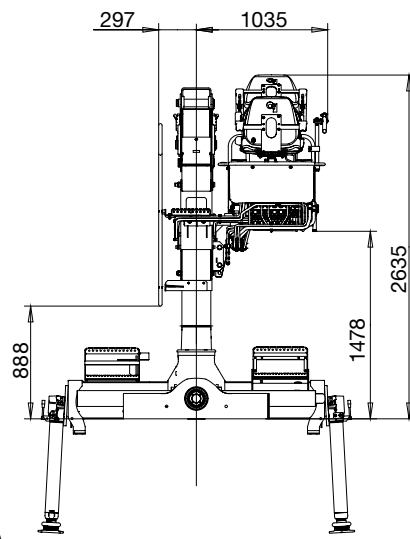
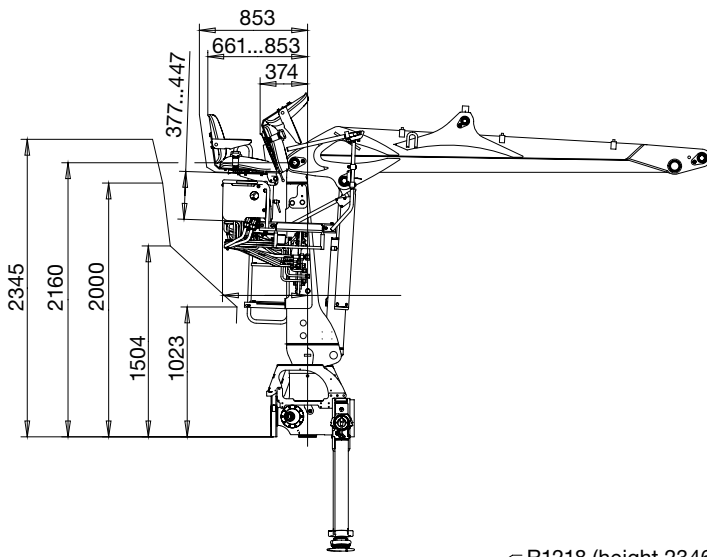


Fastening	6-1	6-2	6-3	6-4	6-5	6-6
STANDARD	1036	580	580	1036	260	602
STD-WIDE	1352	670	670	1352	260	602
B5200	1036	580	580	1036	260	705

JONSERED 1100RS

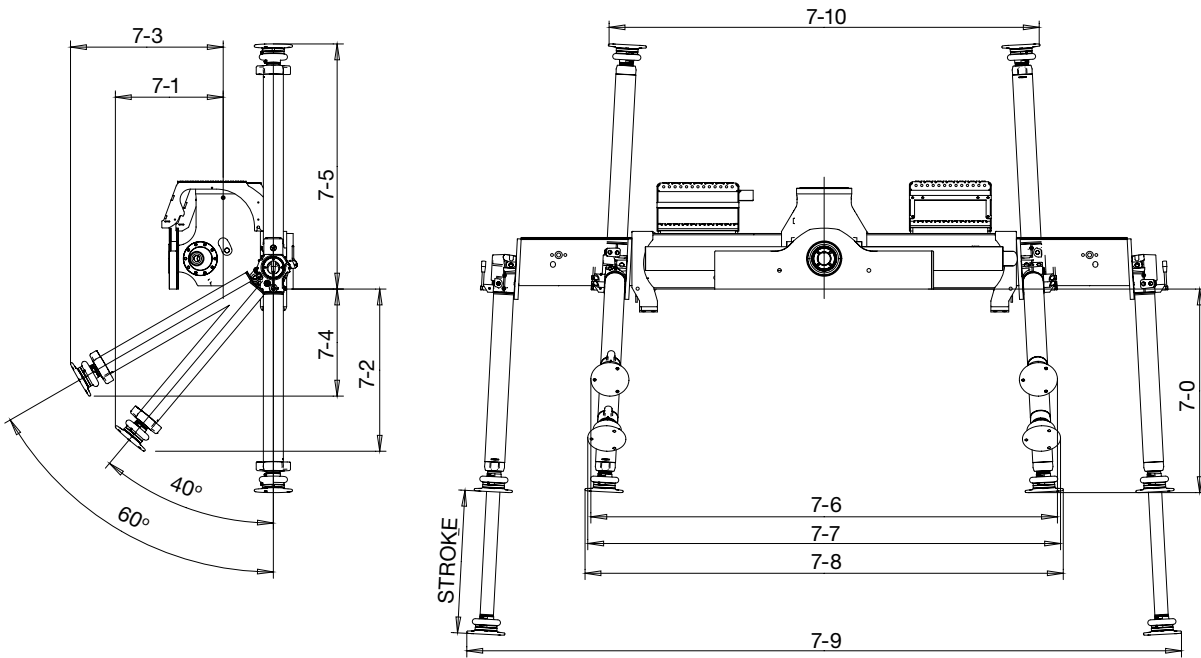
High seat - right side

Column 2160



JONSERED 1100RS

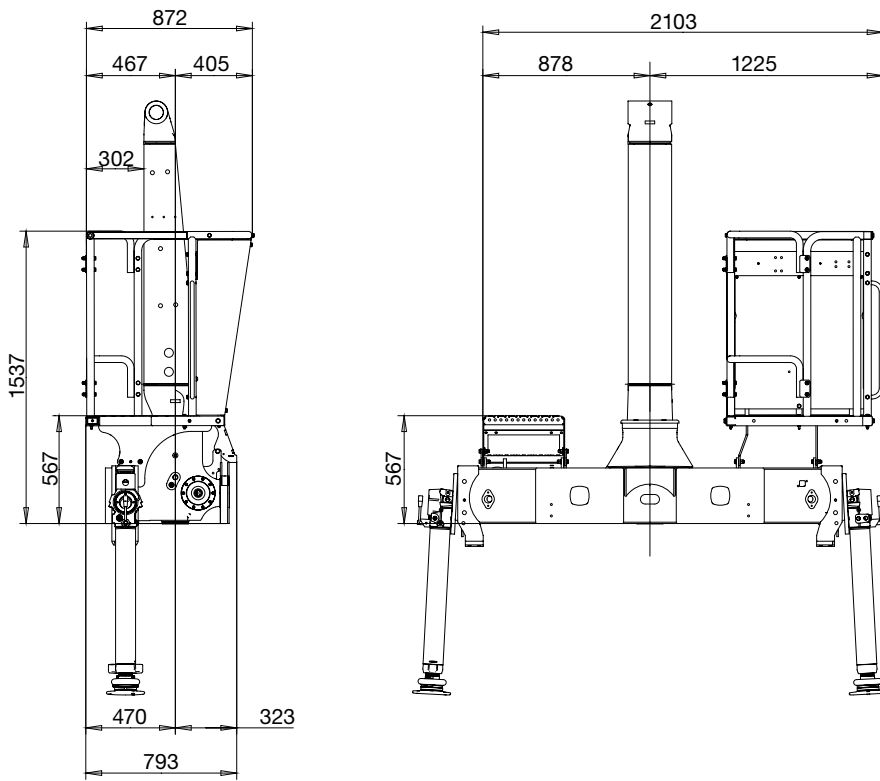
Stabilizers



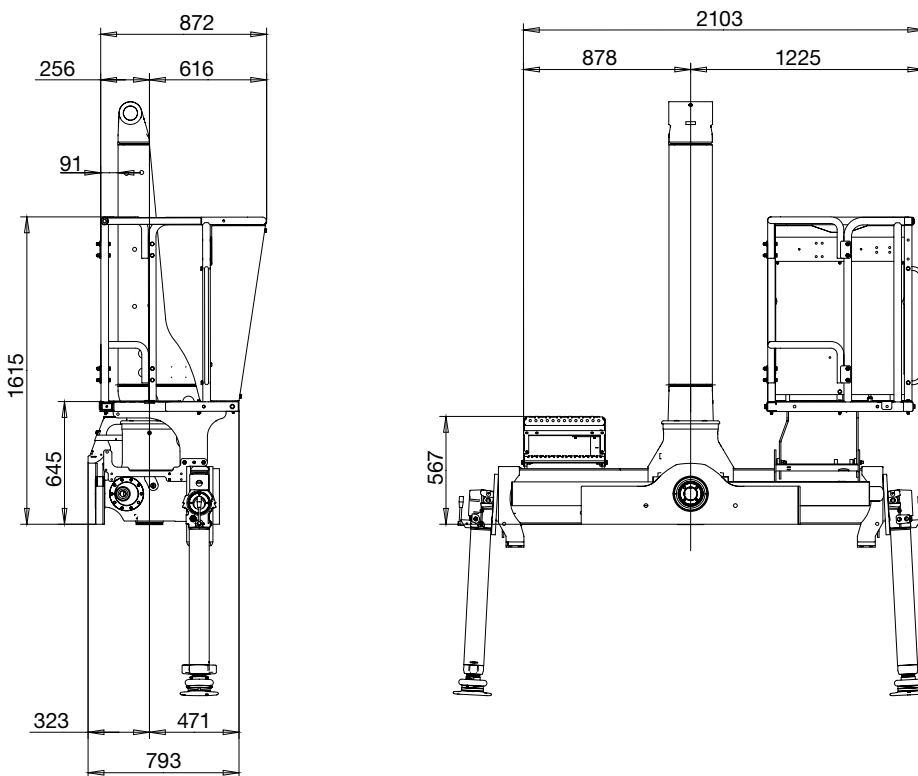
Measurements	Cylinder	Stroke	7-0	7-1	7-2	7-3	7-4	7-5	7-6	7-7	7-8	7-9	7-10
STD & STD-WIDE	H	580	901	459	723	657	479	1117	2442	2470	2495	3720	2286
	F	670	991	517	792	735	524	1207	2447	2478	2504	2738	2276
	A	750	1070	567	852	802	562	1288	2452	2484	2513	3755	2260
B5200	H	580	901	459	723	657	479	1117	2452	2480	2505	5262	2296
	F	670	991	517	792	735	524	1207	2457	2488	2514	5281	2286
	A	750	1070	567	852	802	562	1288	2462	2494	2523	5298	2278

JONSERED 1100RS

Platform Standard in mounting position A with column 2160

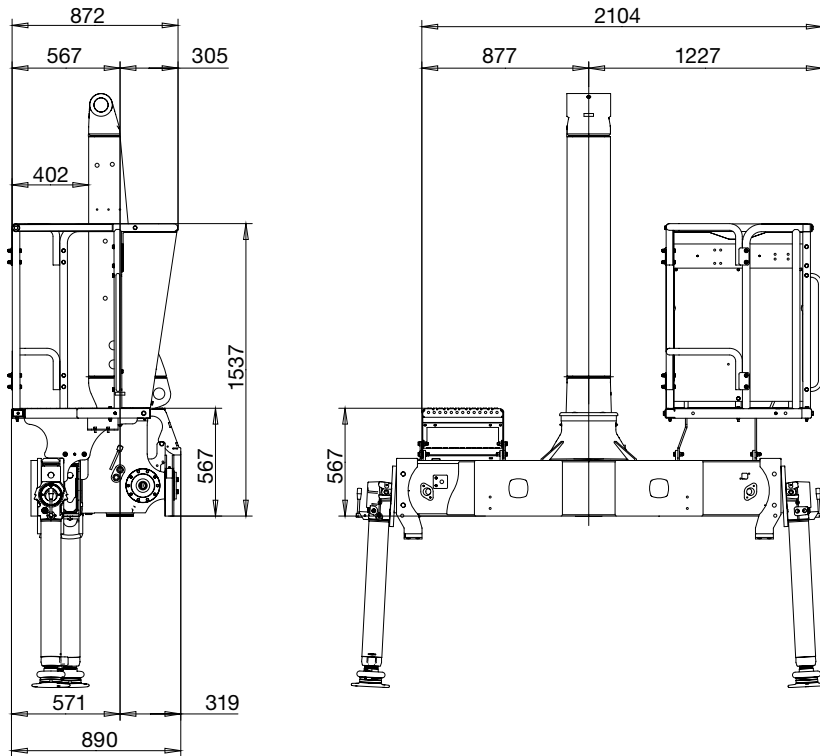


Platform Standard in mounting position R with column 160

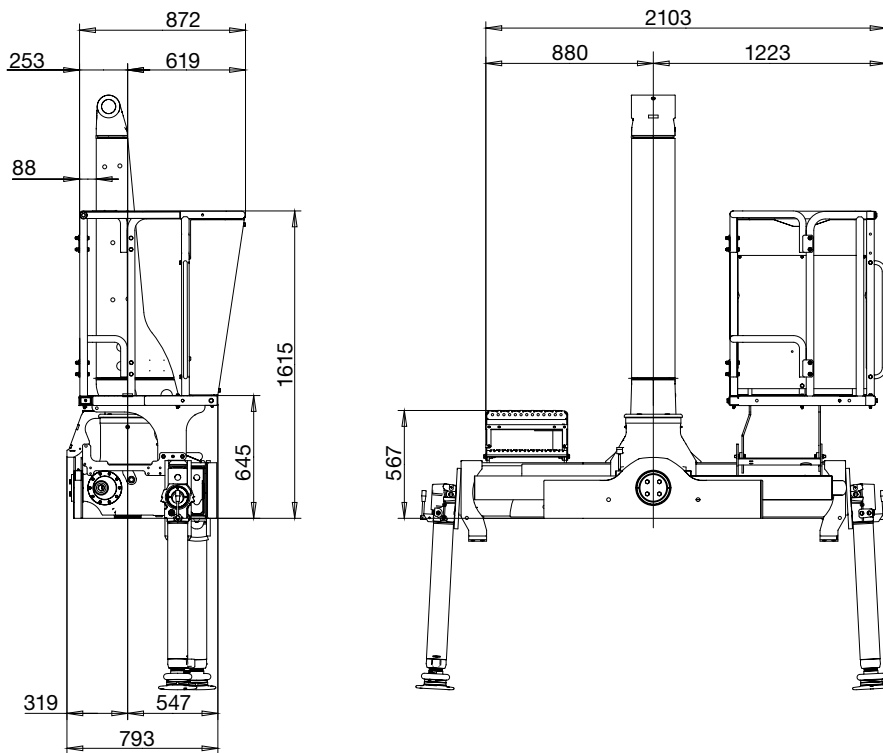


JONSERED 1100RS

Platform B5200 in mounting position A with column 2160

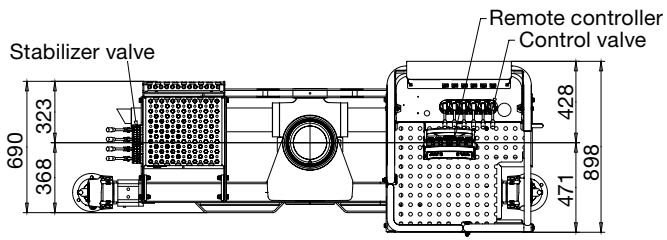


Platform B5200 in mounting position R with column 2160

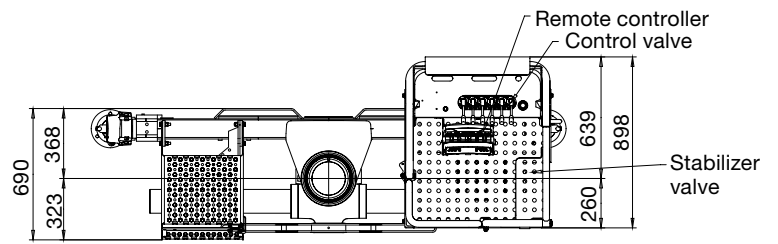


JONSERED 1100RS

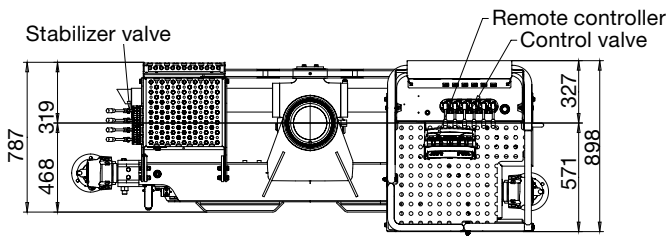
Mounting position A Standard



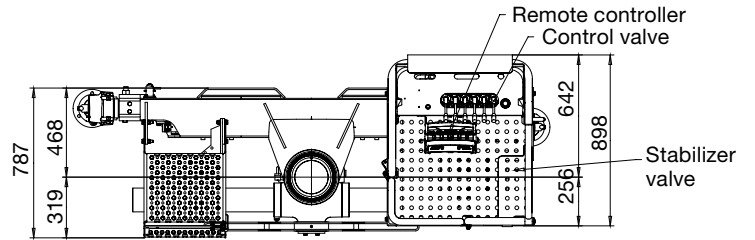
Mounting position R Standard



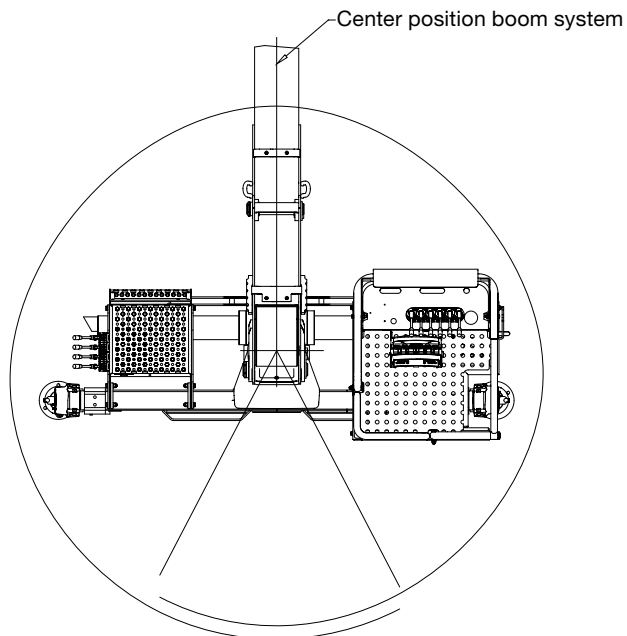
Mounting position A B5200



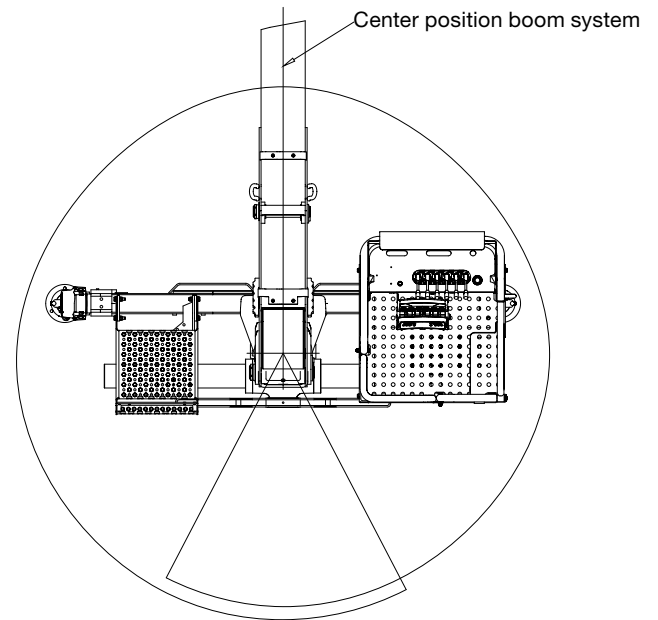
Mounting position R B5200



Mounting position A slew angle



Mounting position R slew angle



BUILT TO PERFORM

Hiab is the world's leading provider of on-road load handling equipment. Customer satisfaction is the first priority for us. Hiab's product range includes HIAB loader cranes, JONSERED recycling and forestry cranes, LOGLIFT forestry cranes, MOFFETT truck-mounted forklifts and MULTILIFT demountables, as well as DEL, WALTCO and ZEPRO tail lifts. www.hiab.com

Hiab is part of Cargotec. www.cargotec.com



TD-J1100RS-EN-WW_170811



hiab.com