



VCA Headquarters
1 The Eastgate Office Centre
Eastgate Road
Bristol, BS5 6XX
United Kingdom

Switchboard: +44 (0) 117 951 5151
Main Fax: +44 (0) 117 952 4103
Email: enquiries@vca.gov.uk
Web: www.vca.gov.uk

THE UNITED KINGDOM VEHICLE APPROVAL AUTHORITY

Rev 1/03



1/

COMMUNICATION CONCERNING^{2/} ~~APPROVAL GRANTED/ APPROVAL~~
~~EXTENDED/ APPROVAL REFUSED/ APPROVAL WITHDRAWN/~~
~~PRODUCTION DEFINITELY DISCONTINUED~~ OF A TYPE OF REAR
UNDERRUN PROTECTIVE DEVICE (RUPD), PURSUANT TO
REGULATION NO 58.02

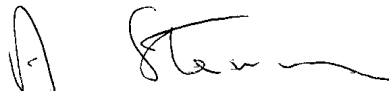
Approval No: 58R-0210267

Reason(s) for Extension: Not applicable

1. Trade name or mark of device: DEL Tailifts
2. Type of device: DL1000W
3. Name and address of manufacturer:

DEL Equipment (United Kingdom) Limited
Building 1
Windrush Park Road
Windrush Industrial Park
Whitney
Oxfordshire
OX29 7HA
United Kingdom
4. If applicable, name and address of manufacturer's representative: Not applicable
5. Characteristics of the device (dimensions and its fixing elements)
Box section steel 100 x 50 x 3 mm. See manufacturer's documentation for details
6. Test conducted on a rigid bench ~~/ on a vehicle / on a representative part of the chassis of a vehicle^{2/}~~
7. Position on the device of the points of application of the test forces:
P₁ - 325mm from centreline
P₂ - 460mm from centreline
P₃ - On centreline



8. Maximum horizontal deflection observed during and after the application of the test forces in annex 5: 33mm (P₂)
9. Vehicles on which the device may be installed (if applicable): Not applicable
10. Maximum mass of vehicle on which the device may be installed: 12,000kg
11. Device submitted for approval on: 25 January 2010
12. Technical service responsible for conducting approval tests: Vehicle Certification Agency
13. Date of report issued by that service: 25 January 2010
14. Number of report issued by that service: ESK214766d
15. Approval GRANTED ~~/REFUSED/EXTENDED/WITHDRAWN~~ in respect of the RUPD ^{2/}
16. Position of approval mark on the device: On front of underrun bar
17. Place: BRISTOL
18. Date: 25 JANUARY 2010
19. Signature: 
A W Stenning
Head of Technical and Quality Group
20. The following documents, bearing the approval number shown above, are available upon request:
 - Drawings, diagrams and layout plans of the components of the structure considered to be of importance for the purposes of this Regulation
 - Where applicable drawings of the protective devices and their position on the vehicle.

^{1/} Distinguishing number of the country which has granted/extended/refused/withdrawn approval (see approval provisions in the Regulation)

^{2/} Strike out what does not apply

**Information document relating to ECE type-approval as a component
with respect of a rear underrun protective device
(ECE Regulation 58.02)**

0. General

0.1. Make (trade name of manufacturer): DEL Tailifts

0.2. Type and general commercial description(s): DL1000W

0.5. Name and address of manufacturer:

DEL Equipment (United Kingdom) Limited
Building 1,
Windrush Park Road,
Windrush Industrial Park,
Whitney,
Oxon. OX29 7HA
United Kingdom

0.7. In the case of components and separate technical units, location and method of affixing of the ECE approval mark: On front of underrun bar

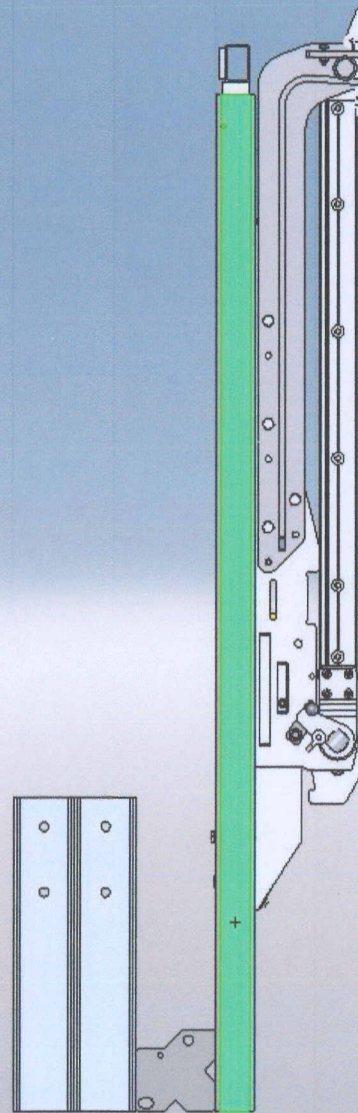
0.8. Address(es) of assembly plant(s): As 0.5 above

Full description and/or drawing of the rear underrun protection device (including mounting and fittings):
See Annex 1

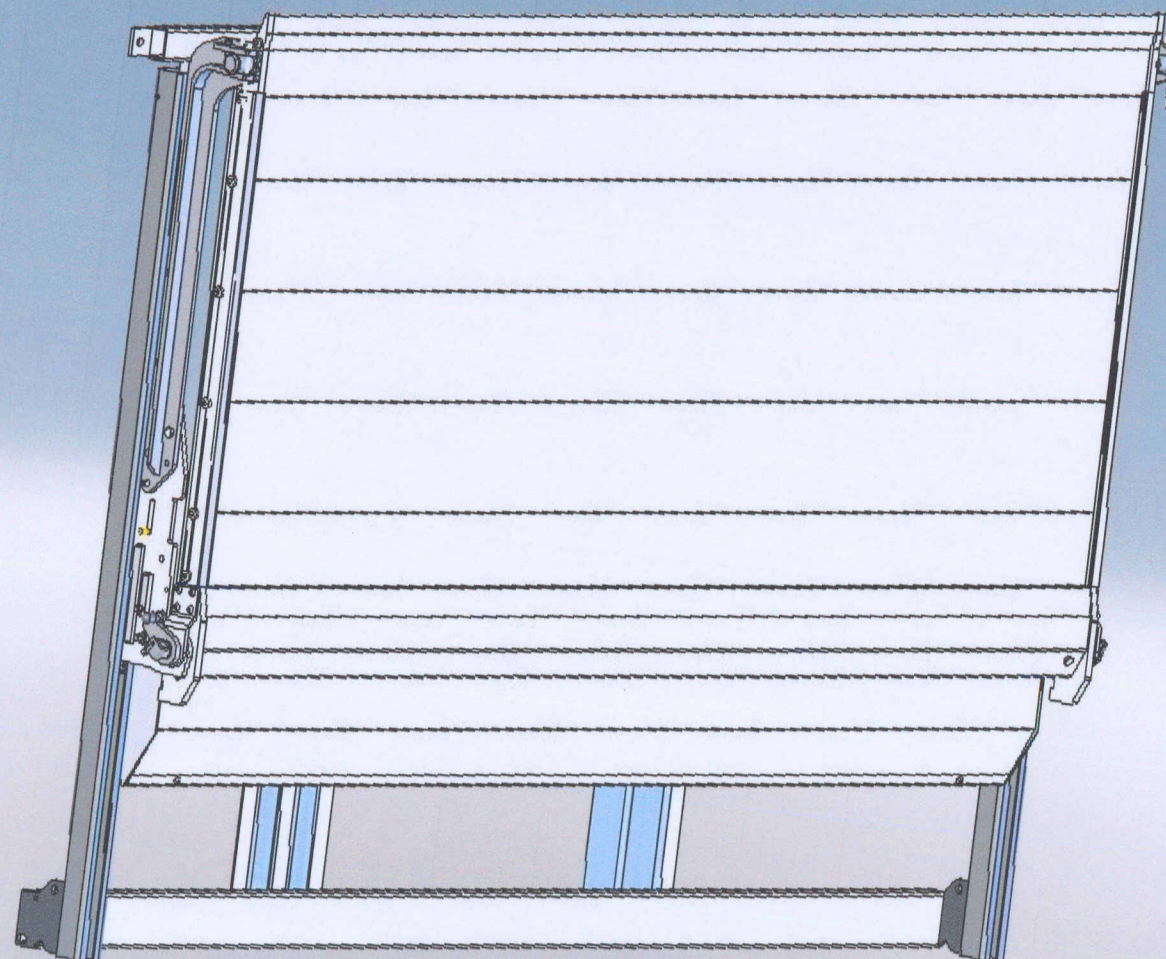




General assembly DL1000W and DL1000B



General assembly DL1000W and DL1000B



General assembly DL1000W and DL1000B

1700 to 2540

DL1000 BOLT/WELD ON RUPD
APPROVAL NO: 58R-0210267 - DL1000W
58R-0210268 - DL1000B

FLOOR SUPPORT

50,8

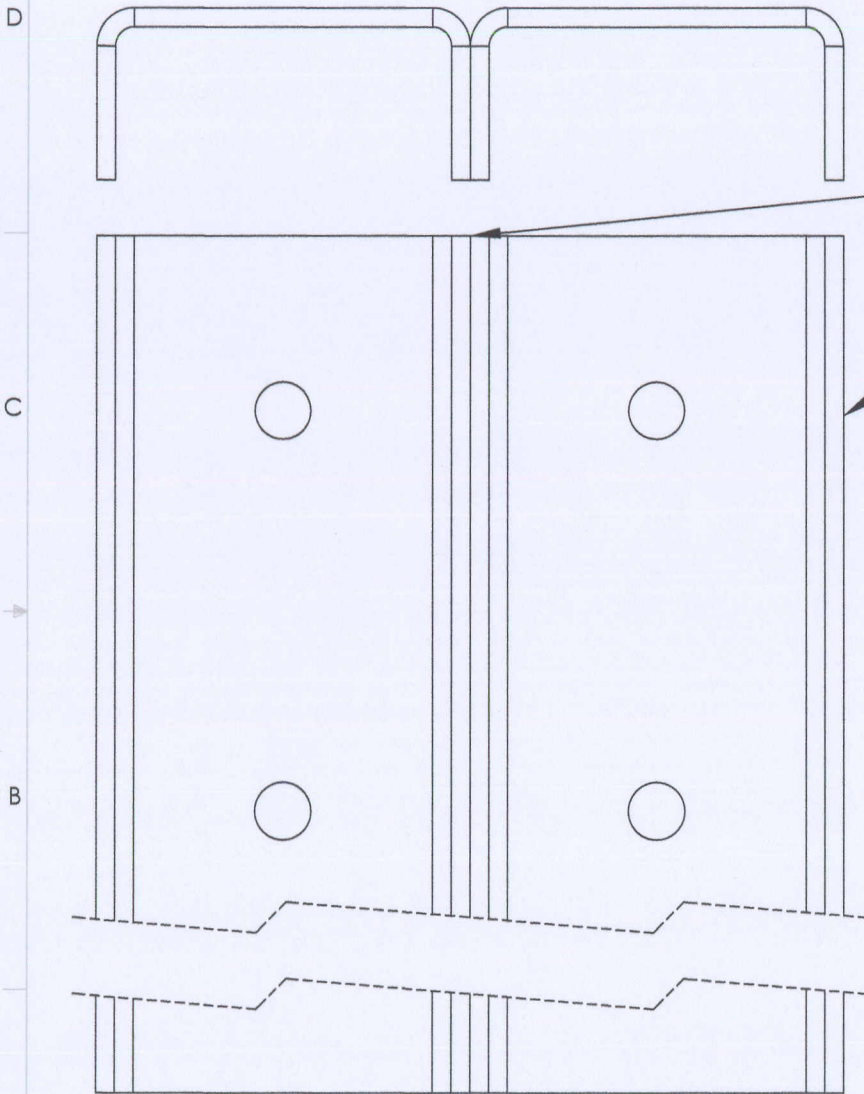
50,8

292,0

300 to 560

BRACING TO SUIT 830 TO 860 CHASSIS

Box section
RUPD
100X50X3
steel (S275)



ITEM NO.	QTY.	PART NO.	DESCRIPTION
1	2	58731	MID-BRACING,DL1000

6 ∇ 3x50
6 ∇ 3x50 EQUI SPACED

General Tolerance
 ± 1.0
Unless Otherwise Specified

Hole Tolerances	
Hole Size	Tolerance
3.00-10.00	+0.15 -0.00
10.00-16.00	+0.25 -0.00
>16.00	+0.40 -0.00

Material:
SEE BOM
Finish:
DEBURRED
The information contained in this drawing is the sole property of DEL Equipment (U.K) Ltd. Any reproduction, in part or whole, without the written permission of DEL Equipment (U.K) Ltd. is prohibited.

DWG. NO. **58732**

SCALE 1:5

Dim's mm

DEL TAILIFTS

DEL EQUIPMENT (UK) Ltd.
BUILDING 1
WINDRUSH PARK ROAD
WITNEY, OXON, OX29 7HA
TEL: 01993 708811
FAX: 01993 798787

25/01/2010	AT	AT		ORIGINAL ISSUE	757	A
Date	Modelled	Detailed	Approved	Description	Change	Issue
8		7		6		

Made From:
GALV SHEET
STEEL
S275

Title:
MID-BRACING WELDED ASSY,DL1000

Used on:

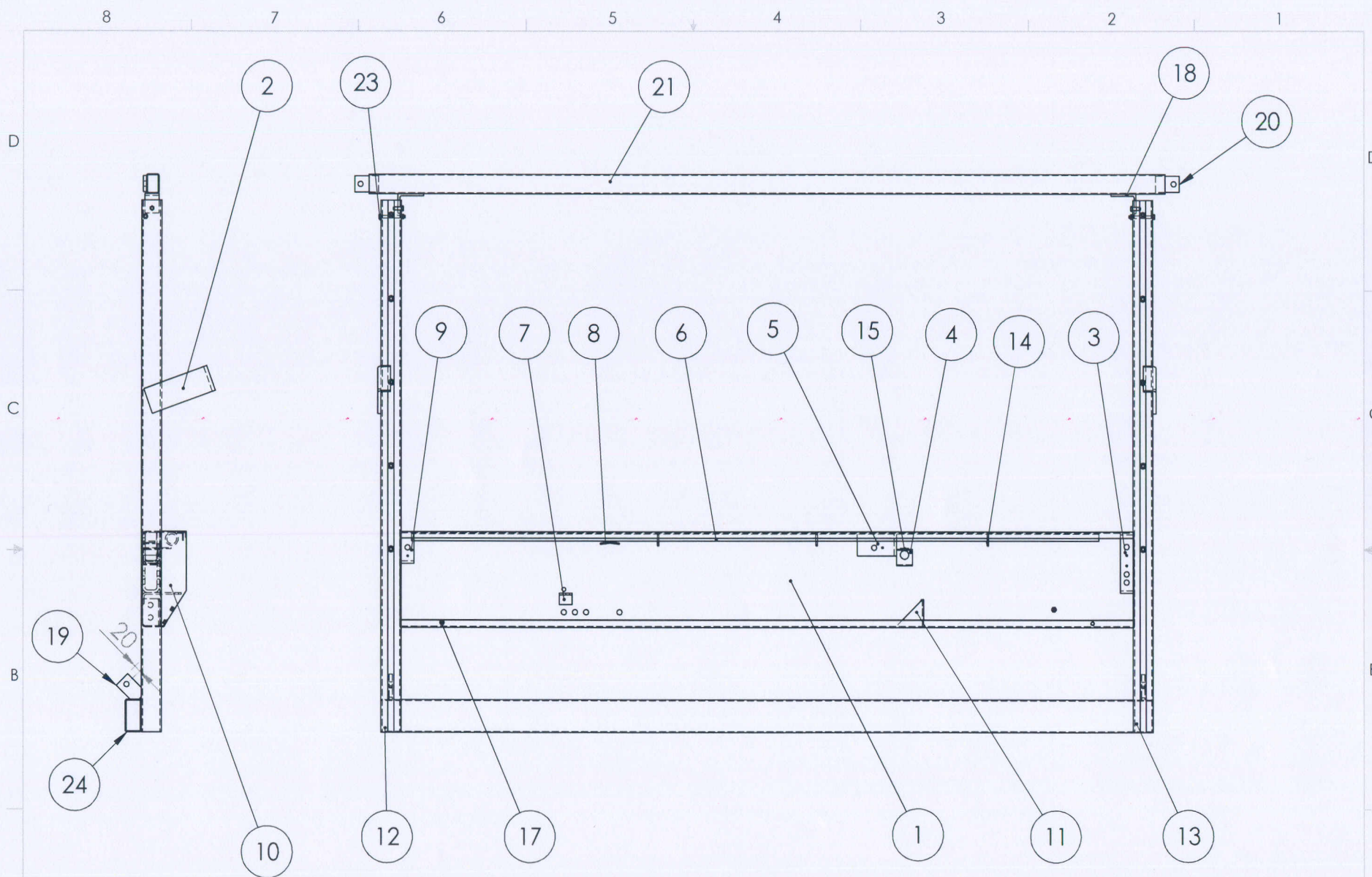
A

SHEET 1/1

SHEET SIZE A4

25-Jan-10

UK Approval Authority



General Tolerance
 ± 1.5
Unless Otherwise Specified

Hole Tolerances	
Hole Size	Tolerance
3.00-10.00	+0.15 -0.00
10.00-16.00	+0.25 -0.00
>16.00	+0.40 -0.00

Material:
SEE B.O.M
Finish:
DEBURRED

The information contained in this drawing is the sole property of DEL Equipment (U.K.) Ltd. Any reproduction, in part or whole, without the written permission of DEL Equipment (U.K.) Ltd. is prohibited.

SCALE
1:16
Dims
mm

DWG. NO.

HF78729

DEL
TALIFTS

DEL EQUIPMENT (UK) Ltd.
UNIT 2, AVENUE 3
STATION LANE, WITNEY
OXON, OX8 6BT
TEL: 01993 708811
FAX 01993 798787

Used on:

B A
SHEET
1/4
SHEET SIZE
A4

30/04/2003	MT				030429b	B
18/10/2002	MT	MT		ORIGINAL ISSUE		A
Date	Modelled	Detailed	Approved	Description	Change	Issue

Made From:

Title:

H FRAME WELDED ASSY, 95", PRE-GALVANISED-DL1000



ITEM NO.	QTY.	PART NO.	DESCRIPTION
1	1	78715	HOUSING, 11.5", 2287, NARROW BEAM-H FRAME WELDED ASSY
2	2	74417	POWER LOCK, MK3(208x40)
3	1	74945	SPROCKET BRACKET, RH, C/W TAG FIXING HOLE
4	1	70243	CHAIN SLIPPER BRACKET
5	1	74388	SPROCKET BRACKET, RETURN, C/W TAG FIXING HOLE
6	1	52107	LOCATING ANGLE, TOE GUARD, 95" AC
7	1	75039	POWER PACK MOUNTING BRACKET-DL1000NB
8	1	74381	CHAIN RUNNER-H FRAME WELDED ASSY, DL500NB
9	1	74387	SPROCKET BRACKET, LH, C/W TAG FIXING HOLE
10	2	75041	INFILL, 11", NARROW BEAM-H FRAME WELDED ASSY
11	1	10013	BRACKET, ADJ BOLT
12	1	75691	COLUMN, 1625, LH
13	1	75692	COLUMN, 1625, RH
14	3	77056	WELDED RING, 5x30 I/D, POLISHED
15	1	72011	FLAT, 25x3x90
16	2	72627	SCREW, M8x25, HEX HD, PLATED
17	2	72640	NUT, M8
18	2	76927	MOUNTING ANGLE ASSY-CROSS BAR ASSEMBLY
19	2	75621	MOUNTING PLATE, UNDERUN BAR-DL1000NB, ROSEBURY
20	2	74968	UNDERUN BRACKET
21	1	79910	BOX SECTION, 60x40x3x2489
22	2	72510	NUT, M8 NYLOC, GRADE 10, PLATED
23	2	75950	BOLT, M8x75, HEX HD, PLATED
24	1	78774	BOX SECTION, 100x50x3x2413

General Tolerance
 ± 1.5
Unless Otherwise Specified

Hole Tolerances	
Hole Size	Tolerance
3.00-10.00	+0.15 -0.00
10.00-16.00	+0.25 -0.00
>16.00	+0.40 -0.00

Material:
SEE B.O.M
Finish:
DEBURRED

The information contained in this drawing is the sole property of DEL Equipment (U.K.) Ltd. Any reproduction in part or whole, without the written permission of DEL Equipment (U.K.) Ltd. is prohibited.



Dim's
mm

DWG. NO.

HF78729



DEL EQUIPMENT (UK) Ltd.
UNIT 2, AVENUE 3
STATION LANE, WITNEY
OXON, OX8 6BT
TEL: 01993 708811
FAX 01993 798787

Used on:

Title:
H FRAME WELDED ASSY, 95", PRE-GALVANISED-DL1000

B

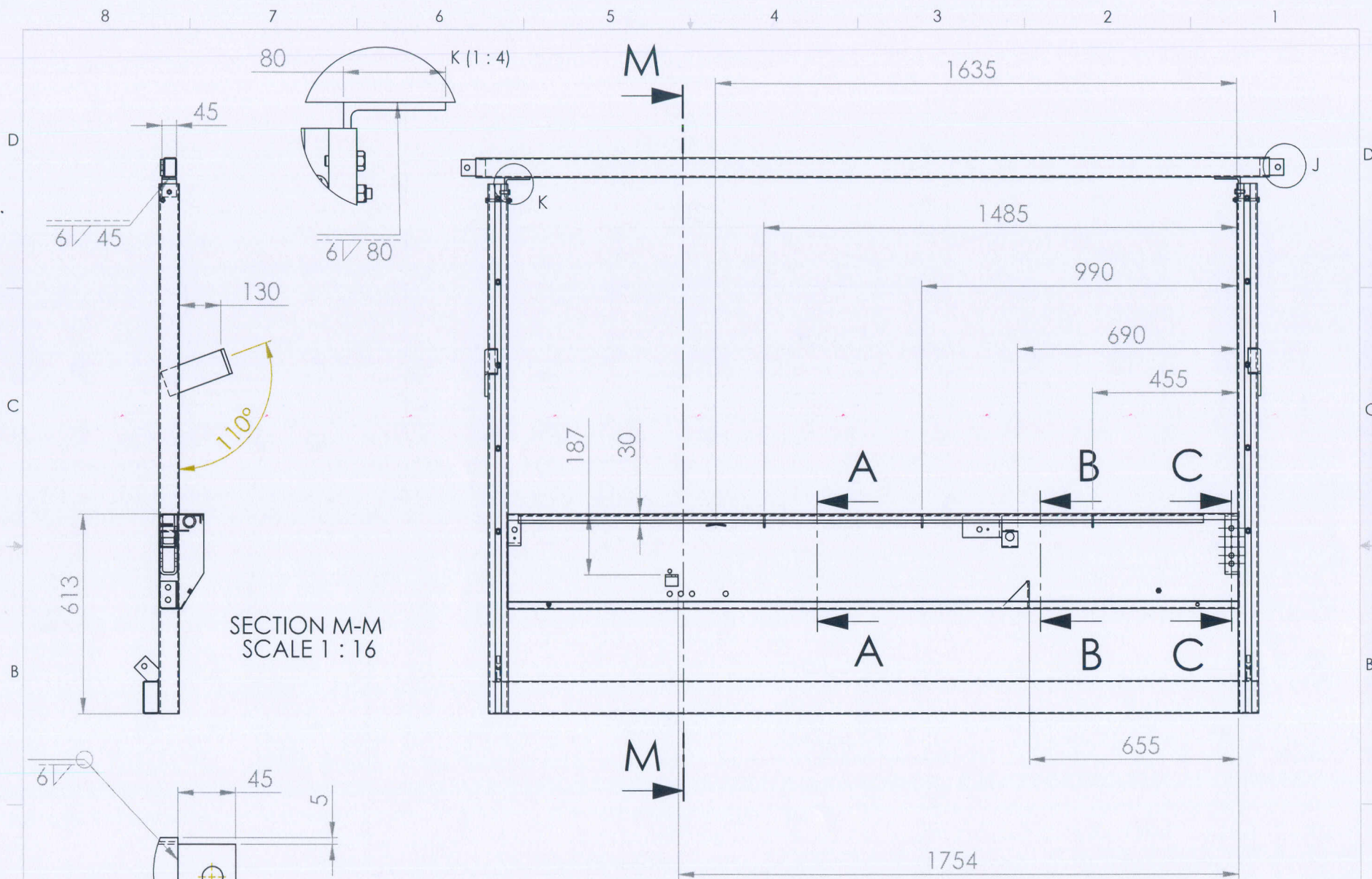
SHEET
2/4
SHEET SIZE
A4





25-Jan-10

UK Approval Authority

30/04/2003	MT				030429b	B
18/10/2002	MT	MT		ORIGINAL ISSUE		A
Date	Modelled	Detailed	Approved	Description	Change	Issue



General Tolerance			Hole Tolerances		Material: SEE B.O.M Finish: DEBURRED	 SCALE 1:16 Dims mm	DWG. NO. HF78729	 DEL EQUIPMENT (UK) Ltd. UNIT 2, AVENUE 3 STATION LANE, WITNEY OXON, OX8 6BT TEL: 01993 708811 FAX 01993 798787
± 1.5			Hole Size	Tolerance				
Unless Otherwise Specified			3.00-10.00	+0.15 -0.00				
			10.00-16.00	+0.25 -0.00				
	030429b	B	>16.00	+0.40 -0.00	The Information contained in this drawing is the sole property of DEL Equipment (U.K) Ltd. Any reproduction, in part or whole, without the written permission of DEL Equipment (U.K) Ltd. is prohibited.			
SUE		A	Made From:	Title:	Used on:			

30/04/2003	MT				030429b	B
18/10/2002	MT	MT		ORIGINAL ISSUE		A
Date	Modelled	Detailed	Approved	Description	Change	Issue

Made From: Title: H FRAME WELDED ASSY, 95", PRE-GALVANISED-DL1000

B
SHEET 3/4
SHEET SIZE A4



8

7

6

5

4

3

2

1

D

C

B

A

D

C

B

A

Z

O

26.50 TYP.

DETAIL O
SCALE 1 : 4

TYP.

DETAIL N
SCALE 1 : 4

TYP.

General Tolerance
 ± 1.5
Unless Otherwise Specified

Hole Tolerances	
Hole Size	Tolerance
3.00-10.00	+0.15 -0.00
10.00-16.00	+0.25 -0.00
>16.00	+0.40 -0.00

Material:
SEE B.O.M
Finish:
DEBURRED

The Information contained in this drawing is
the sole property of DEL Equipment (U.K) Ltd.
Any reproduction, in part or whole, without the
written permission of DEL Equipment (U.K) Ltd.
is prohibited.

DWG. NO.
SCALE
1:16
Dims
mm

DWG. NO.

HF78729

DEL
TAILIFTS

DEL EQUIPMENT (UK) Ltd.
UNIT 2, AVENUE 3
STATION LANE, WITNEY
OXON, OX8 6BT
TEL: 01993 708811
FAX 01993 798787

B

SHEET
4/4
SHEET SIZE
A4

VCA

25-Jan-10

UK Approval Authority

30/04/2003	MT				030429b	B
18/10/2002	MT	MT		ORIGINAL ISSUE		A
Date	Modelled	Detailed	Approved	Description	Change	Issue

Made From:

Title:
H FRAME WELDED ASSY, 95", PRE-GALVANISED-DL1000

Used on: