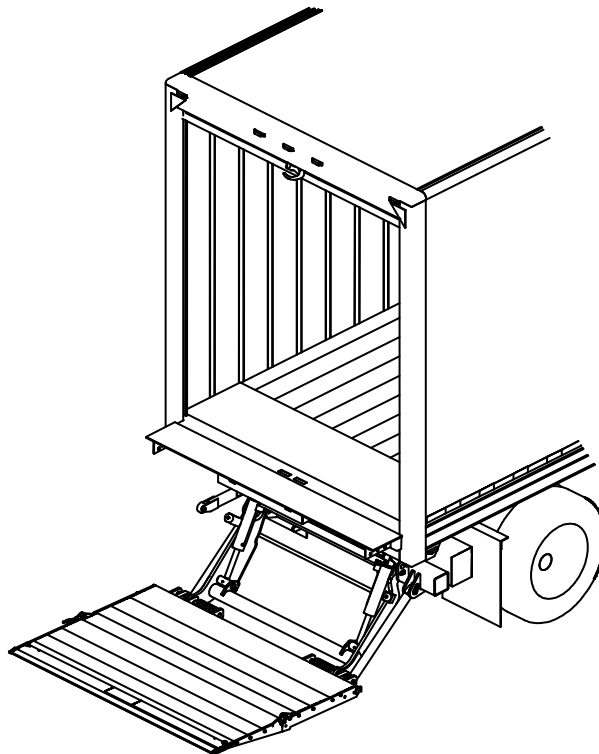


Parts Manual

HLF

2500, 3000, 4000 & 5000 lb. Capacity Flipaway Liftgates



This manual identifies parts for Liftgates manufactured:

06/2013 to Current

Last Change

<i>Date</i>	<i>Page(s)</i>	<i>Description</i>
5-2016	10, 11, 13, 15	<i>P10-11 – Added complete platforms and additional kits P13 – Revised kits deleted item 18 changed item 20, added GV bed extensions P-15 – Up-dated electrical schematic for clarification, corrected/added part numbers of circuit breakers</i>

Waltco Lift Corp.
Corporate Office United State
285 Northeast Ave.
Tallmadge, OH 44278
P: 330.633.9191
F: 330.633.1418

Waltco Lift Corp.
United States
620 S Hambledon Ave.
City of Industry, CA 91744
P: 626.964.0990
F: 626.964.0149

Waltco Lift Inc.
Canada
90 North Queen St.
Etobicoke, ON M8Z 2C5
P: 888.343.4550

Table of Contents



Improper operation and maintenance of this liftgate could result in severe personal injury or death.

Read and understand the contents of the owner's manual and all warning and operation decals before operating and/or performing maintenance on this liftgate.

INTRODUCTION	3
HOW TO ORDER PARTS	4
MODEL INFORMATION.....	5
DECALS	6
MOUNT FRAME, 2500 & 3000 LB. CAPACITY.....	8
MOUNT FRAME, 4000 & 5000 LB. CAPACITY.....	9
PLATFORM, 2500 & 3000 LB. CAPACITY.....	10
PLATFORM, 4000 & 5000 LB. CAPACITY.....	11
BED EXTENSION (prior to 12-14-2015)	12
BED EXTENSION (after 12-14-2015)	13
HYDRAULIC LAYOUT	14
ELECTRIC CONTROL OPTIONS	15
UNDER-RIDE	16
WALK RAMP.....	17

Introduction

Each Waltco liftgate is manufactured to stringent quality standards for years of reliable service. To ensure maximum performance of your Waltco liftgate, always specify and use “OEM Parts” from Waltco.

This manual does not provide procedures for the servicing and repair of Waltco liftgates. Service and repair should only be performed by an authorized Waltco distributor. For information on the nearest authorized Waltco distributor contact:

Waltco Lift Corp.

285 Northeast Avenue

Tallmadge, OH 44278

Phone: 800.411.5685

Fax: 800.411.5684

E-mail: parts@waltco.com



The use of non-standard or makeshift parts can be extremely hazardous and result in serious injury or death.



Every vehicle that has a WALTCO Liftgate must have legible WARNING AND OPERATION DECALS clearly posted on the vehicle and an OWNER'S MANUAL in the vehicle at all times as a guide for proper operation and maintenance.

How To Order Parts

Repairs should be made only by authorized mechanics using WALTCO Replacement parts.

When ordering repair or replacement parts, please include all the information asked for below. If this information is not available, a complete written description or sketch of the required part will help WALTCO identify and deliver the needed part to you.

THE FOLLOWING INFORMATION MUST BE INCLUDED:

1. SERIAL NUMBER - [WALTCO liftgate serial numbers can be found on the Specification Tag attached to the mount frame. (On older units the Specification Tag is located on the side or bottom of the platform.)]
2. MODEL NUMBER - [Or capacity]
3. PLATFORM SIZE

THEN INCLUDE THE FOLLOWING INFORMATION:

4. PART NUMBERS
5. DESCRIPTION
6. QUANTITY REQUIRED

MAIL, E-MAIL OR PHONE YOUR REQUEST TO:

Waltco Lift Corp
285 Northeast Avenue
Tallmadge, OH 44278
1-800-411-5685
FAX: 1-800-411-5684
E-MAIL: parts@waltco.com

ALL PARTS ARE F.O.B. FROM THE SHIPPING FACTORY

PLEASE NOTE:

To assure you of continuing and effective quality control, our warranty policy permits replacement of hydraulic cylinders, valves and motor pump units when their factory seals are intact. Parts under warranty will be exchanged promptly after careful inspection of the returned assemblies.

Model Information

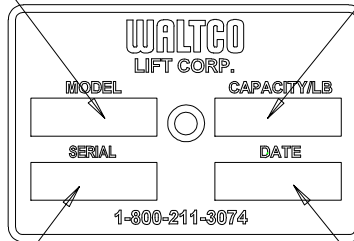
Explanation of Specification Tag

Model Name	Description	Capacity
HLF25	Twin Cylinder	2500 lb.
HLF30	Twin Cylinder	3000 lb.
HLF40	Twin Cylinder	4000 lb.
HLF50	Twin Cylinder	5000 lb.

MODEL NAME

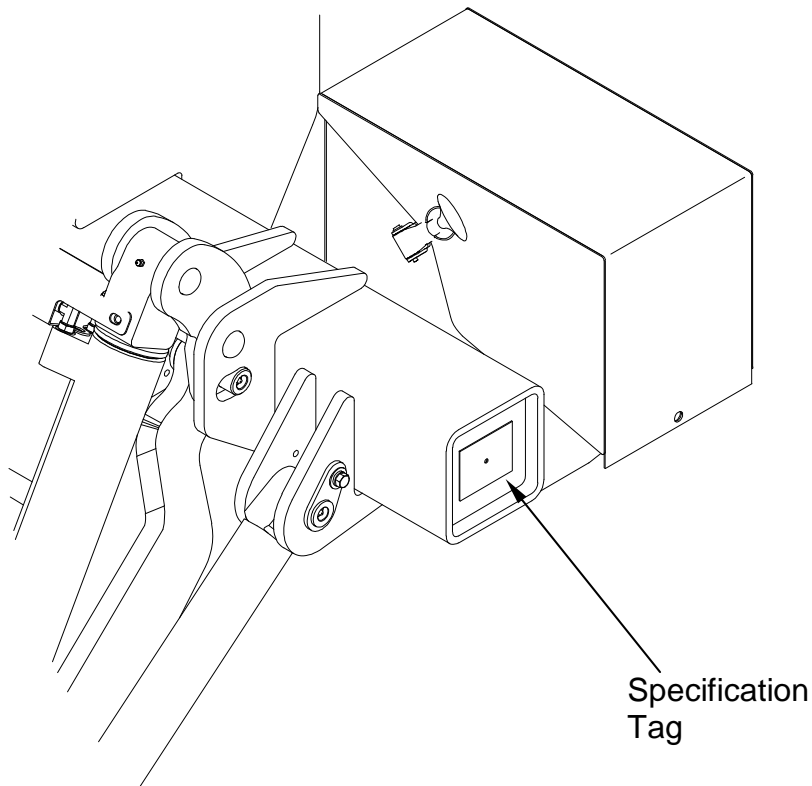
RATED CAPACITY
Based on an evenly distributed load on the platform flat surface.

SERIAL NUMBER
of liftgate. To be used when ordering parts or when contacting Waltco for service or warranty questions



DATE OF MANUFACTURE
Month / Year

GR00241



GR02837

Decals

To order complete set of HLF-Series liftgate decals, order kits below:

HLF-25 = Kit part number 80002130

HLF-30 = Kit part number 80002131

HLF-40 = Kit part number 80002132

HLF-50 = Kit part number 80002133

Decals

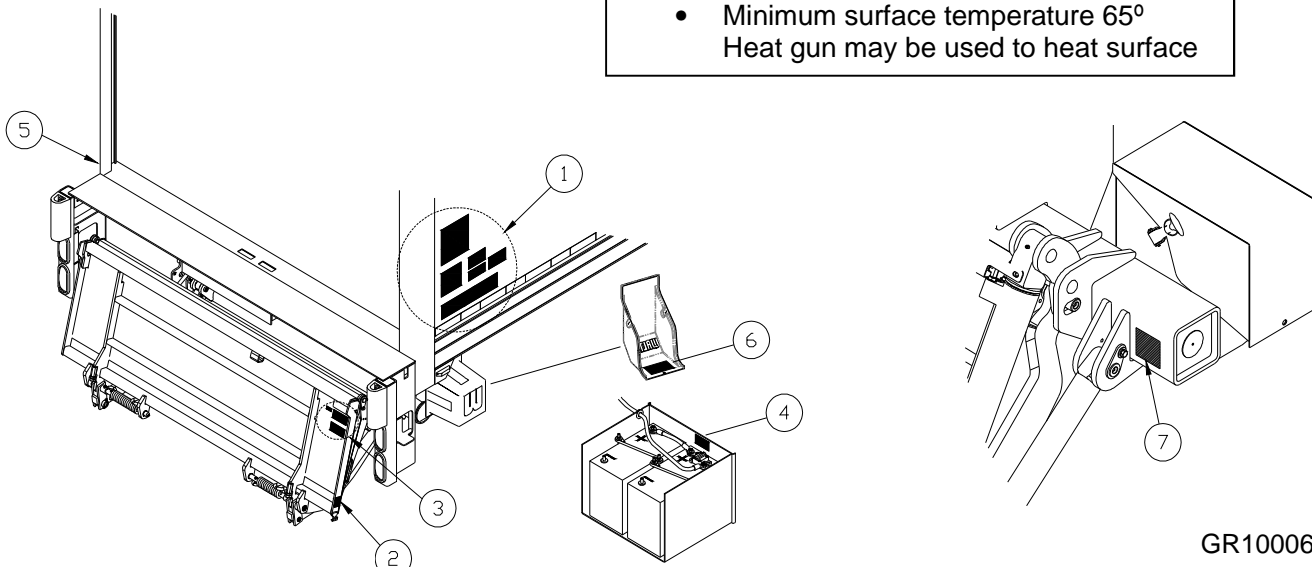


All decals must be in place and legible or all warranties are void.

ITEM	DECAL	QTY	PART NO.	LOCATION
1	Safety Instructions	1	80100850	<p>Locate in a conspicuous place near controls.</p> <p> If your liftgate is equipped with dual controls, an additional Safety Instruction decal (80100850) is to be placed in a conspicuous place near the second set of controls.</p> <p>Refer to the following diagram showing decal locations.</p>
	Operation	1	80101664	
	Hazard Decal	1	80101370	
	Important Decal	1	80100828	
	Motor Thermal Switch	1	80101480	
	Stand Clear Decal	1	75089296	
2	Capacity Decal-2500lb	1	80100255	<p>Locate on curbside of platform (Position so as to be read when platform is open)</p>
	Capacity Decal-3000lb	1	80100257	
	Capacity Decal-4000lb	1	80100260	
	Capacity Decal-5000lb	1	80100263	
3	Use Handle Decal	1	75089295	<p>Locate near platform handle (Positioned so as to be read when platform is being unfolded into loading position)</p>
	Stand Clear Decal	1	75089296	
	Capacity Decal-2500lb	1	80100255	
	Capacity Decal-3000lb	1	80100257	
	Capacity Decal-4000lb	1	80100260	
	Capacity Decal-5000lb	1	80100263	
4	Circuit Breaker Decal	1	80100829	<p>Locate next to liftgate circuit breaker. In applications where more than one circuit breaker is used, this decal must be placed in both locations</p>
5	Stand Clear Decal	1	75089296	Locate on driver's side of vehicle body near liftgate
6	Schematics Decal	1	80101622	Locate inside of pump box cover
7	Made in the U.S.A. Decal	1	80101318	Locate curbside of tube outside of lift arm.

To maximize decal adhesion to surfaces:

- Surface must be dry and clean
- Firm pressure must be applied to decal
- Minimum surface temperature 65°
Heat gun may be used to heat surface

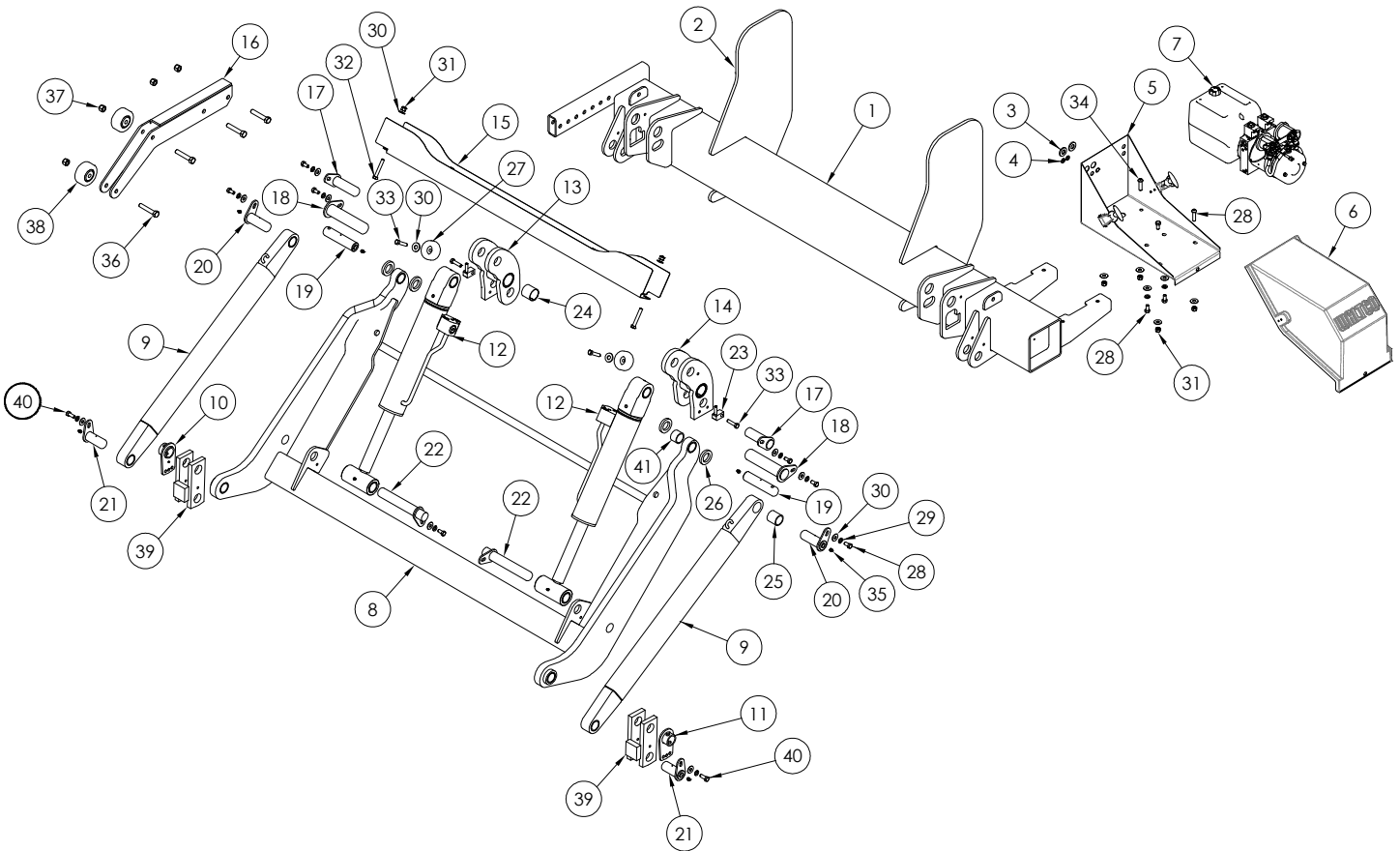


GR10006

ITEM	PART NUMBER	QTY	DESCRIPTION
1	22720015	1	Mount Frame Assembly, 3000#
	22720021		Mount Frame Assy, 3000#, Galvanized
2	22770302	2	Mount Plate, 2500# & 3000#
	22770304		Mount Plate, 2500# & 3000#, For Galvanized
3	75089313	2	Grommet, 1/2" ID
4	75089322	2	Grommet, 5/16" ID
5	22795022	1	Pump Enclosure Weldment Compete
	22795026GV		Pump Enclosure, Galvanized, Compete
6	22793030	1	Pump Enclosure Lid, Plastic, Compete
7	70430610	1	Hydraulic Pump, HLF-25 & 30
8	22730016	1	Lift Arm Weldment
	22730014		Lift Arm Weldment, Under-Ride
	22730015		Lift Arm Weldment, Hitch & Dock Lock
	22730013		Lift Arm Weldment, Hitch & Dock Lock, Under-Ride
	22730020		Lift Arm Weldment, Galvanized
9	22755010	2	Parallel Arm Weldment
	22755015		Parallel Arm Weldment, Galvanized
10	22750551	1	Stop Block Adjust, DS
11	22750501	1	Stop Block Adjust, CS
12	22780060	2	Hydraulic Cylinder, HLF-25, 30, & 40
13	22724001	1	Auto Tilt Block, DS
	22724005		Auto Tilt Block, DS, Galvanized
	22724002		Auto Tilt Block, CS
14	22724006	1	Auto Tilt Block, CS, Galvanized
15	22718501	1	Hose Guard
	22718505		Hose Guard, Zinc Plated
16	22793501 ^C	1	Parting Bar Weldment
	22793501GV ^D		Parting Bar Weldment, Galvanized
	1000021-08 ^B		Pin, 1-1/4" x 3-5/8"

18	1000021-13 ^B	2	Pin, 1-1/2" x 6-3/16"
19	22712301 ^B	2	Pin, Lift Arm Pivot
20	1000022-05 ^B	2	Pin, 1-1/4" x 3-3/16"
21	1000022-03 ^B	2	Pin, 1-1/4" x 2-5/8"
22	1000021-11 ^B	2	Pin, 1-1/4" x 6-11/16"
23	22735001	2	Pin Retaining Block
24	42668119 ^A	4	Bearing, Fiberglide, 1-1/2" ID x 1-1/2"
25	10010192 ^A	6	Bearing, 1-1/4" ID x 1-1/2"
26	22714102	4	Spacer
27	22714201	2	Puck
28	75086055 ^B	10	Hex Bolt, 3/8-16 x 3/4"
29	75088081 ^B	14	Lock Washer, 3/8"
30	75088053 ^B	16	Washer, 3/8"
31	75085193	6	Lock Nut, 3/8-16
32	7500010-26	2	Hex Bolt, 3/8-16 x 2-1/2"
33	75086218	4	Hex Bolt, 3/8-16 x 1-1/4", Gr 8
34	75086872	4	Socket Button Head, 3/8-16 x 1-1/4"
35	75089307	6	Grease Zerk, 5/16"
36	7500010-14 ^{CD}	4	Hex Bolt, 1/2-13 x 2-3/4"
37	75085162 ^{CD}	4	Top Lock Nut, 1/2-13
38	75081348 ^{CD}	2	Roller, Plastic
39	22750010	2	Stop Block, 4-1/2" Spacing
40	7500010-6	2	Hex Bolt, 3/8-16 x 1", Gr 8
41	10010189 ^A	2	Bearing, 1-1/4" ID x 1"
42	22797001	1	Galvanized Mounting Hardware Kit (not shown)

^A Included in Bearing Replacement Kit 80001314
^B Included in Pin Replacement Kit 80001315
^C Included in Parting Bar Assembly 22794001
^D Included in Parting Bar Assembly Galv 22794001GV



MOUNT FRAME ASSY, 2500 & 3000 LBS CAPACITY

WALTCO LIFT CORP.
HLF-25 & 30

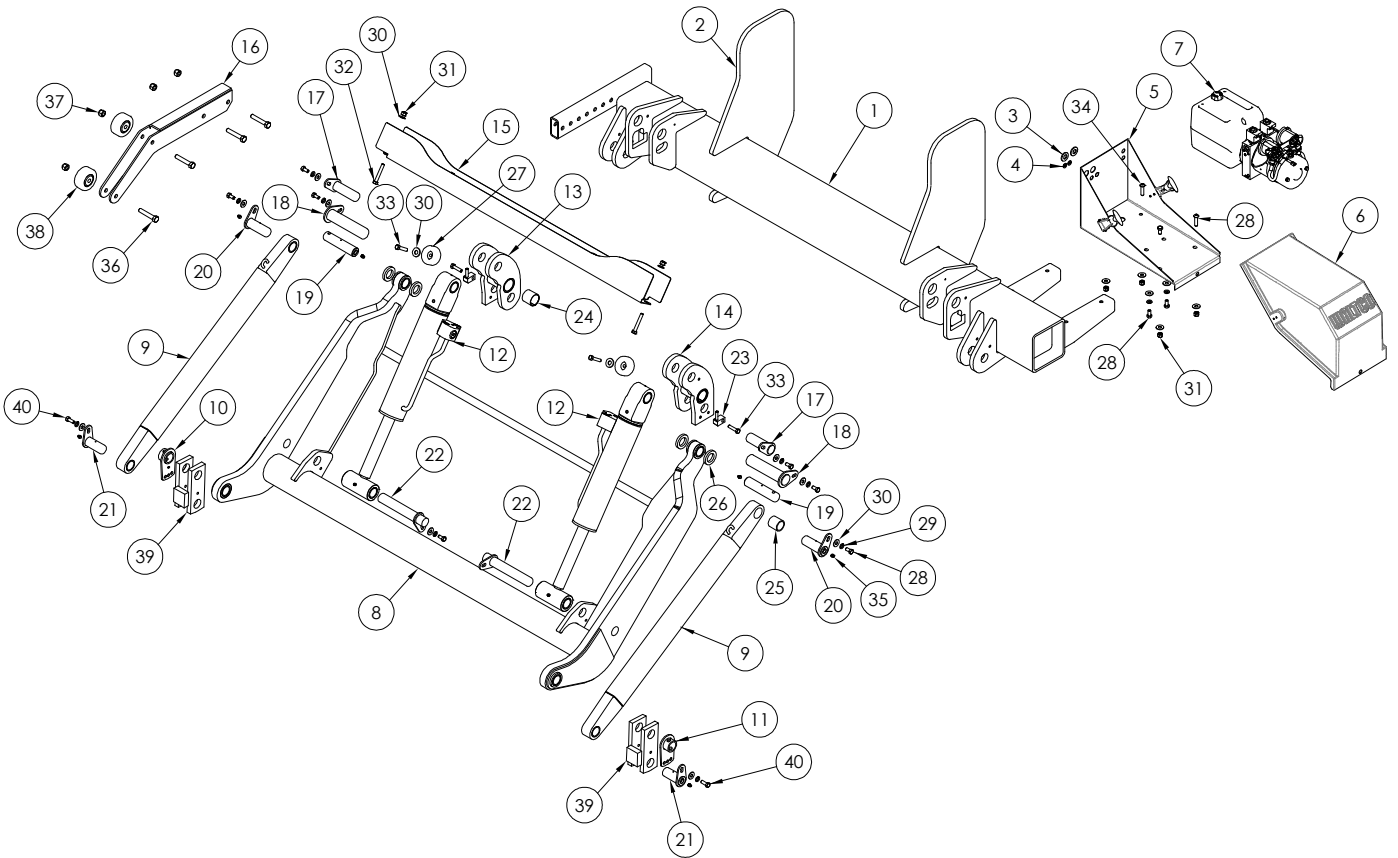
REVISED: 5-2016
E.O. 7921
REV 05

PM-838A

ITEM	PART NUMBER	QTY	DESCRIPTION
1	22720010	1	Mount Frame Assembly
	22720010GV		Mount Frame Assembly, Galvanized
	22720011		Mount Frame Assembly, Under-Ride
	22720011GV		Mount Frame Assembly, Under-Ride, Galvanized
2	22770301	2	Mount Plate, 4000# & 5000#
	22770305		Mount Plate, 4000# & 5000# for Galvanized
3	75089313	2	Grommet, 1/2" ID
4	75089322	2	Grommet, 5/16" ID
5	22795022	1	Pump Enclosure Weldment Complete
	22795026GV		Pump Enclosure Galvanized, Complete
6	22793030	1	Pump Enclosure Lid, Plastic Complete
7	70430620		Hydraulic Pump, HLF-40 & 50
8	22730003	1	Lift Arm Weldment
	22730003GV		Lift Arm Weldment, Galvanized
	22730006		Lift Arm Weldment, Certified Under-Ride
	22730006GV		Lift Arm Weldment, Certified Under-Ride, Galvanized
9	22755010	2	Parallel Arm Weldment
	22755015		Parallel Arm Weldment, Galvanized
10	22750551	1	Stop Block Adjust, DS
11	22750501	1	Stop Block Adjust, CS
12	22780060	2	Hydraulic Cylinder, HLF-25, 30, & 40
	22780050		Hydraulic Cylinder, HLF-50
13	22724001	1	Auto Tilt Block, DS
	22724005		Auto Tilt Block, DS, Galvanized
14	22724002	1	Auto Tilt Block, CS
	22724006		Auto Tilt Block, CS, Galvanized
15	22718501	1	Hose Guard
	22718505		Hose Guard, Zinc Plated
16	22793501 ^c	1	Parting Bar Weldment

	22793501GV ^d	1	Parting Bar Weldment, Galvanized
17	1000021-08 ^b	2	Pin, 1-1/4" x 3-5/8"
18	1000021-13 ^b	2	Pin, 1-1/2" x 6-3/16"
19	22712301 ^b	2	Pin, Lift Arm Pivot
20	1000022-05 ^b	2	Pin, 1-1/4" x 3-3/16"
21	1000022-03 ^b	2	Pin, 1-1/4" x 2-5/8"
22	1000021-11 ^b	2	Pin, 1-1/4" x 6-11/16"
23	22735001	2	Pin Retaining Block
24	42668119 ^a	4	Bearing, Fiberglide, 1-1/2" ID x 1-1/2"
25	10010192 ^a	8	Bearing, 1-1/4" ID x 1-1/2"
26	22714101	4	Spacer
27	22714201	2	Puck
28	75086055 ^b	10	Hex Bolt, 3/8-16 x 3/4"
29	75088081 ^b	14	Lock Washer, 3/8"
30	75088053 ^b	16	Washer, 3/8"
31	75085193	6	Lock Nut, 3/8-16
32	7500010-26	2	Hex Bolt, 3/8-16 x 2-1/2"
33	75086218	4	Hex Bolt, 3/8-16 x 1-1/4", Gr 8
34	75086872	4	Socket Button Head, 3/8-16 x 1-1/4"
35	75089307	6	Grease Zerk, 5/16"
36	7500010-14 ^{cd}	4	Hex Bolt, 3/8-16 x 2-3/4"
37	75085162 ^{cd}	4	Top Lock Nut, 3/8-16
38	75081348 ^{cd}	2	Roller, Plastic
39	22750010	2	Stop Block, 4-1/2" Spacing
40	7500010-6	2	Hex Bolt, 3/8-16 x 1"
41	22797002	1	Galvanized Mounting Hardware Kit (not shown)

^A Included in Bearing Replacement Kit 80001314
^B Included in Pin Replacement Kit 80001315
^C Included in Parting Bar Assembly 22794001
^D Included in Parting Bar Assembly Galv 22794001GV



MOUNT FRAME ASSY, 4000 & 5000 LBS CAPACITY

WALTCO LIFT CORP.
HLF-40 & 50

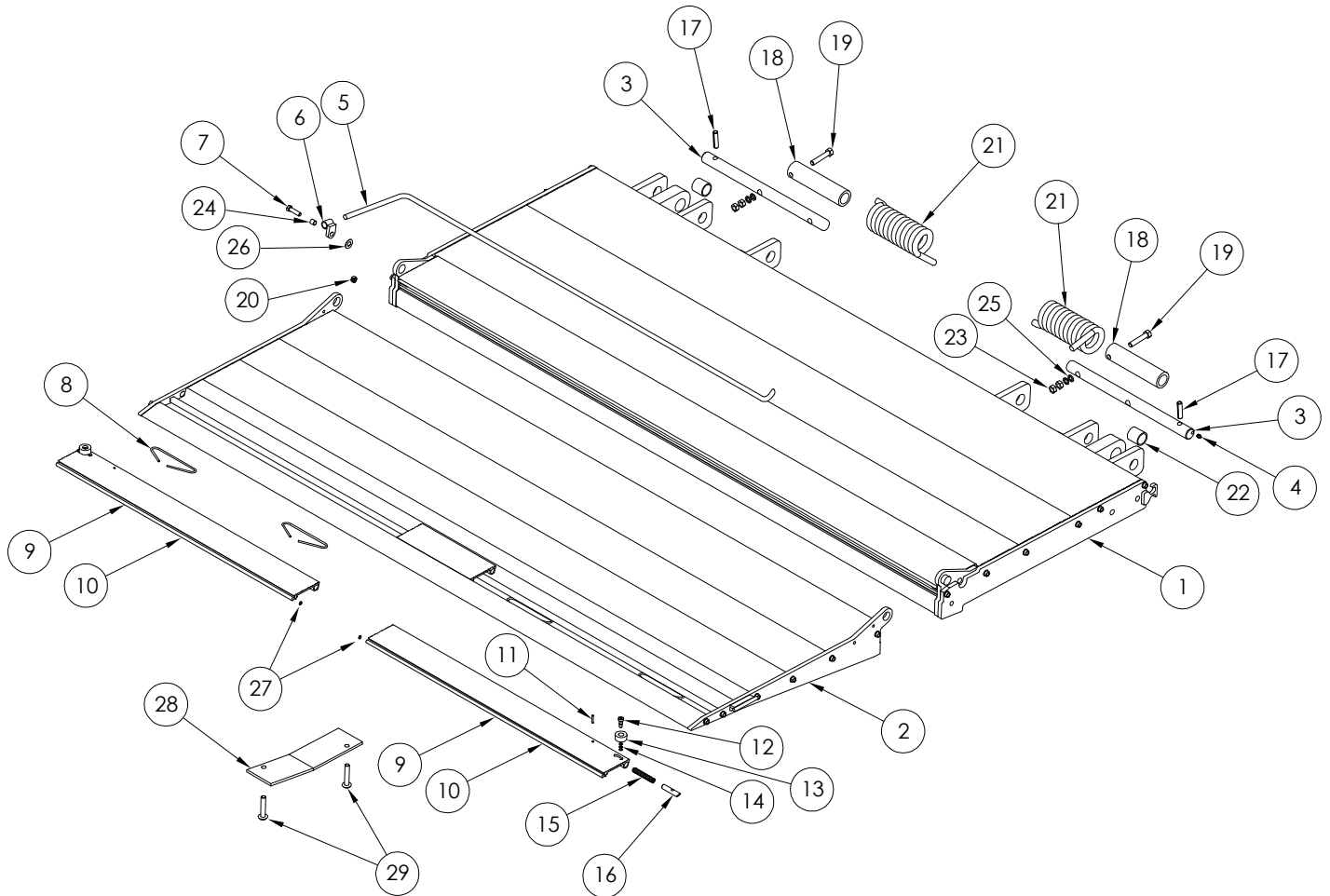
REVISED: 2-2016
E.O. 7921
REV 05

PM-792A

ITEM	PART NUMBER	QTY	DESCRIPTION
1	22711015 ^{AC}	1	Deck Assembly
	22711020 ^{BD}		Deck Assembly, Galvanized
2	80004704 ^{CD}	1	Deck Extension Assembly, w/ Cart Stop Kit
	(22713015)		
	80004705 ^{AB} (22713016)		Deck Extension Assembly
3	22712001 ^{CS}	2	Pin Assembly, Deck (with grease zerk)
4	75089307 ^{CS}	2	Grease Zerk, 5/16"
5	26417701 ^{ABCD}	1	Torsion Bar
6	26417301 ^{ABCD}	1	Torsion Bar Anchor
7	75086219 ^{ABCD}	1	Hex Bolt, 3/8-16 x 1-1/2", Gr 8
8	42668440	4	Spring, Cart Stop
9	26414801	1	Cart Stop Assembly Complete, Curbside
	26414851		Cart Stop Assembly Complete, Driverside
10	42669012 ^E	1	Cart Stop, Curbside
	42669011 ^F		Cart Stop, Driverside
11	75089591 ^{EF}	2	Spring Pin, 3/16" x 7/8"
12	7500019-4 ^{EF}	2	Socket Head Shoulder Bolt, 3/8" x 3/8"
13	42669299 ^{EF}	2	Roll Stop

14	42669286 ^{EF}	6	Shim
15	75088268 ^{EF}	2	Spring, Cart Stop
16	42669014 ^{EF}	2	Locking Pin, Cart Stop
17	75089542 ^{CS}	4	Coil Pin, 1/2" Dia x 2"
18	22716001	2	Spacer Tube
	22716005		Spacer Tube, Zinc Plated
19	7500010-5	2	Hex Bolt, 5/8-11 x 3", Gr 8
20	75085188 ^{ABCD}	1	Nut, 3/8-16, Centerlock
21	22715002	2	Spring, Platform
22	10010192 ^H	2	Bearing, 1-1/4" ID x 1-1/2"
23	7500065-2	2	Jam Nut, Top Lock, 5/8-11
24	22714501 ^{ABCD}	1	Tube, SS, 1/2" OD x .402" ID x 1/2" LG
25	75088085	4	Lock Washer, 5/8"
26	75088056 ^{ABCD}	1	Washer, 1/2"
27	42669286 ^{EF}	2	Shim
28	22713901	1	Wear Pad
29	75089475	2	Blind Rivet, 1/4"

- A Included with entire platform 22710016 60x84
- B Included with entire platform 22710021 60x84 galvanized
- C Included with entire platform 22710015 60x84 w/cart stops
- D Included with entire platform 22710020 60x84 w/cart stops galvanized
- E Included with 26414801 cart stop kit (curbside)
- F Included with 26414851 cart stop kit (driverside)
- G Included in Pin Replacement Kit 80001315
- H Included in Bearing Replacement Kit 80001314.



ALUMINUM PLATFORM ASSEMBLY

WALTCO LIFT CORP.

HLF-25 & 30

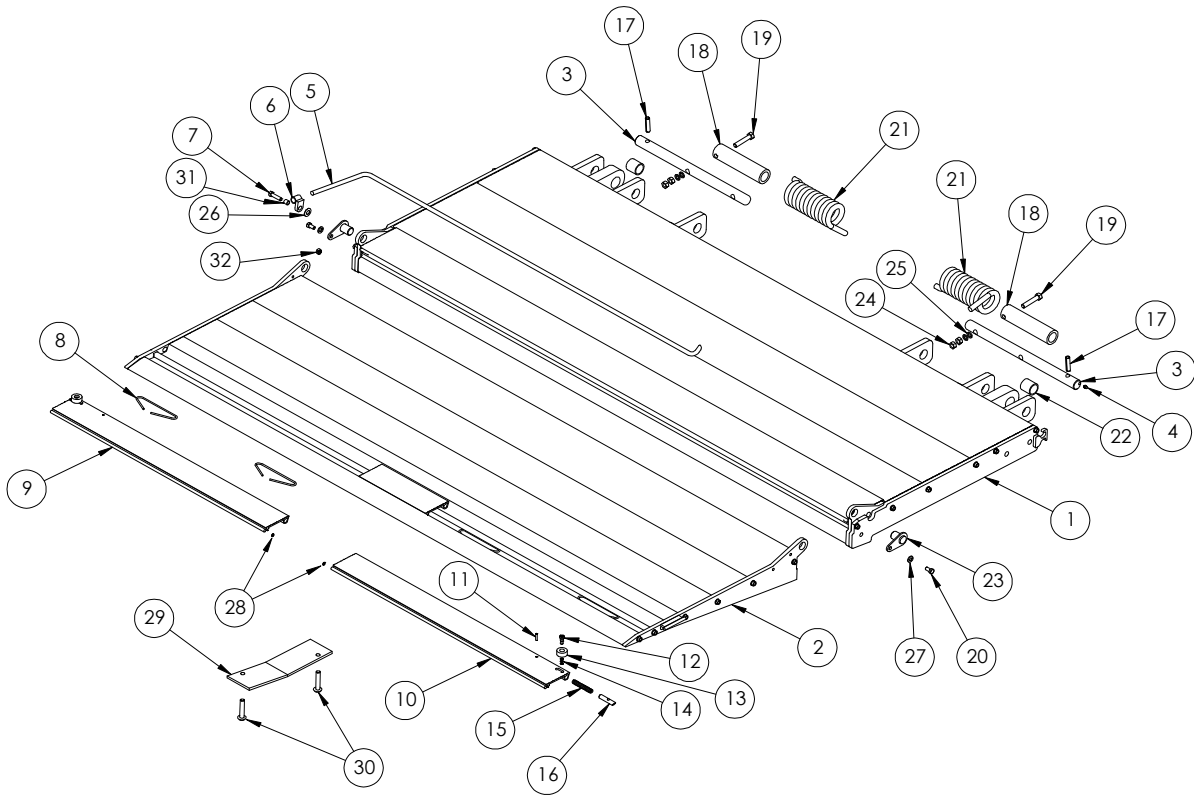
REVISED: 5-2016
E.O. 7921
REV 08

PM-839

ITEM	PART NUMBER	QTY	DESCRIPTION
1	22711001 ^{AC}	1	Deck Assembly
	22711001GV ^{BD}		Deck Assembly, Galvanized
2	22713001 ^{AB}	1	Deck Extension Assembly Complete, w/ Cart Stop
	22713003 ^{CD}		Deck Extension Assembly Complete
3	22712001 ^G	2	Pin Assembly, Deck (with grease zerk)
4	75089307 ^G	2	Grease Zerk, 5/16"
5	26417701 ^{ABCD}	1	Torsion Bar
6	26417301 ^{ABCD}	1	Torsion Bar Anchor
7	7500010-22 ^{ABCD}	1	Hex Bolt, 3/8-16 x 2.0", Gr 8
8	42668440	4	Spring, Cart Stop
9	26414801	1	Cart Stop Assembly Complete, Curbside
	26414851		Cart Stop Assembly Complete, Driverside
10	42669012 ^E	1	Cart Stop, Curbside
	42669011 ^F		Cart Stop, Driverside
11	75089591 ^{EF}	2	Spring Pin, 3/16" x 7/8"
12	7500019-4 ^{EF}	2	Socket Head Shoulder Bolt, 3/8" x 3/8"
13	42669299 ^{EF}	2	Roll Stop
14	42669286 ^{EF}	6	Shim
15	75088268 ^{EF}	2	Spring, Cart Stop
16	42669014 ^{EF}	2	Locking Pin, Cart Stop
17	75089542 ^G	4	Coil Pin, 1/2" Dia x 2"

ITEM	PART NUMBER	QTY	DESCRIPTION
18	22716001	2	Spacer Tube
	22716005		Spacer Tube, Zinc Plated
19	7500010-5	2	Hex Bolt, 5/8-11 x 3", Gr 8
20	7500010-15 ^{ABCD}	2	Hex Bolt, 3/8-16 x 5/8", Gr 8
21	22715002	2	Spring, Platform
22	10010192 ^H	2	Bearing, 1-1/4" ID x 1-1/2"
23	1000101-6 ^{ABCD}	2	Pin Weldment
24	7500065-2	4	Jam Nut, Top Lock, 5/8-11
25	75088085	4	Lock Washer, 5/8"
26	75088056 ^{ABCD}	1	Washer, 1/2"
27	75088081 ^{ABCD}	2	Lock Washer, 3/8"
28	42669286 ^{EF}	2	Shim
29	22713901	1	Wear Pad
30	75089475	2	Blind Rivet, 1/4"
31	22714501 ^{ABCD}	1	Tube, SS, 1/2"OD x .402"ID x 1/2" LG
32	75085188 ^{ABCD}	1	Hex Bolt, 5/8-16, Centerlock

- ^A Included with complete platform 22710001 60x84 w/cart stops
- ^B Included with complete platform 22710001GV 60x84 w/cart stops galvanized
- ^C Included with complete platform 22710003 60x84
- ^D Included with complete platform 22710003GV 60x84 galvanized
- ^E Included with 26414801 cart stop kit (curbside)
- ^F Included with 26414851 cart stop kit (driver side)
- ^G Included in Pin Replacement Kit 80001315.
- ^H Included in Bearing Replacement Kit 80001314.



ALUMINUM PLATFORM ASSEMBLY

ITEM	PART NUMBER	QTY	DESCRIPTION
1	22760001	1	Bed Extension, 96" Vehicles
	22760001GV		Bed Extension, 96" Vehicles, Galvanized
	22760002		Bed Extension, 102" Vehicles
	22760002GV		Bed Extension, 102" Vehicles, Galvanized
	22760003		Bed Extension, Heavy Duty, 96" Vehicles
	22760004		Bed Extension, Heavy Duty, 102" Vehicles
	22760005		Bed Extension, 96" Wide, Walk Ramp
	22760005GV		Bed Extension, 96", Walk Ramp, Galv
	22760006		Bed Extension, 102" Wide, Walk Ramp
	22760007GV		Bed Extension, 102", Walk Ramp, Galv
	22760007		Bed Extension, 96" Wide, Galvanized
	22760008		Bed Extension, 102" Wide Galvanized
	22760009		Bed Extension, 96" Walk Ramp, Galv
	22760010		Bed Extension, 102" Walk Ramp, Galv
	22760011GV		Bed Extension, 102", Multivans Walk Ramp, Galvanized
2	26497011 ^D	1	Dock Bumper, RH For Lights (Option)
	26497011GV ^D		Dock Bumper, RH For Lights, Galvanized (Option)
3	26497061 ^D	1	Dock Bumper, LH For Lights (Option)
	26497061GV ^D		Dock Bumper, LH For Lights, Galvanized (Option)
4	26497010 ^D	1	Dock Bumper, RH (Option)
	26497010GV ^D		Dock Bumper, RH, Galvanized (Option)
5	26497060 ^D	1	Dock Bumper, LH (Option)
	26497060GV ^D		Dock Bumper, LH, Galvanized (Option)
6	26498501	2	Stir-Up Assembly (Option)
	26498501GV		Stir-Up Assembly, Galvanized (Option)
7	26498703 ^B	2	UHMW Bumper, Long (Option)
8	26498702 ^A	2	UHMW Bumper, Short (Option)
9	75088067 ^{AB}	6	Washer, 1/2" (Option)
10	75088085 ^{EF}	8	Lock Washer, 5/8" (Option)
11	75086108 ^{AB}	6	Hex Bolt, 1/2"-13 x 1-1/2" Lg. (Option)
12	75086154 ^{EF}	8	Hex Bolt, 5/8"-11 x 1-3/4" Lg. (Option)

13	75088064 ^{EF}	12	Washer, 5/8" (Option)
14	26498102 ^E	1	Angle Support, CS (25-1/8"Lg) (Option)
	26498102GV ^F		Angle Support, CS, Galvanized (25-1/8"Lg) (Option)
15	26498152 ^E	1	Angle Support, DS (25-1/8"Lg) (Option)
	26498152GV ^F		Angle Support, DS, Galvanized (25-1/8"Lg) (Option)
16	26498301 ^{EF}	2	Angle, 3" x 3" x 1/4" x 24" Lg. (Option)
17	75086218	8	Hex Bolt, 3/8"-16 x 1-1/4" (Option)
18			
19	75088053 ^G	17	Washer, 3/8" (Option)
20	75085005	8	Serrated Hex Nut, 3/8"-16 (Option)
21	26498201	4	Light Bracket (Option)
22	75089334	2	Grommet, 1/2" ID (Option)
23	75086732	12	Round Head Screw, #10-32 (Option)
24	75085000	12	Hex Nut, #10-32 (Option)
25	22797200	2	Harness, 2 Lamps (Option)
26	75089376	4	Light Grommet (Option)
27	75089474	2	Backup Light (Option)
28	75089463	2	Tail Light ST & T (Option)
29	7500010-26 ^G	1	Hex Bolt, 3/8"-16 x 2-1/2" Lg. (Option)
30	22598100 ^G	1	Transit Chain (Option)
31	75085193 ^G	1	Hex Lock Nut, 3/8"-16 (Option)
32	26498550	2	Wire Rope Step Assembly (Option)
33	75085012 ^{EF}	4	Hex Bolt, 5/8"-11 (Option)
34	75088083 ^{AB}	6	Lock Washer, 1/2" (Option)
37	75085008 ^{AB}	6	Hex Nut, 1/2"-13
38	20396000 ^C	2	Rubber Snubber Assembly
39	26496101 ^C	2	Angle, Snubber Bracket
40	75085003 ^C	4	Hex Nut, 5/16-18, Serrated

Dock Bumpers complete / UHMW Bumpers and Truck Lights:
26498013 CS and 26498063 DS –or- 26498013GV CS and 26498063GV DS

Dock Bumpers complete / UHMW Bumpers and Trailer Lights:
26498012 CS and 26498062 DS –or- 26498012GV CS and 26498062GV DS

Dock Bumpers complete / UHMW Bumpers:
26498011 CS and 26498061 DS –or- 26498011GV CS and 26498061GV DS

Dock Bumpers complete / UHMW (WITHOUT lights and wire harness):
26498014 CS and 26498064 DS –or- 26498014GV CS and 26498064GV DS

^A Included in Short UHMW Bumper Kit 26496013

^B Included in Long UHMW Bumper Kit 26496014

^C Included in 80001298 Rubber Snubber Kit

^D These are dock bumper weldments only

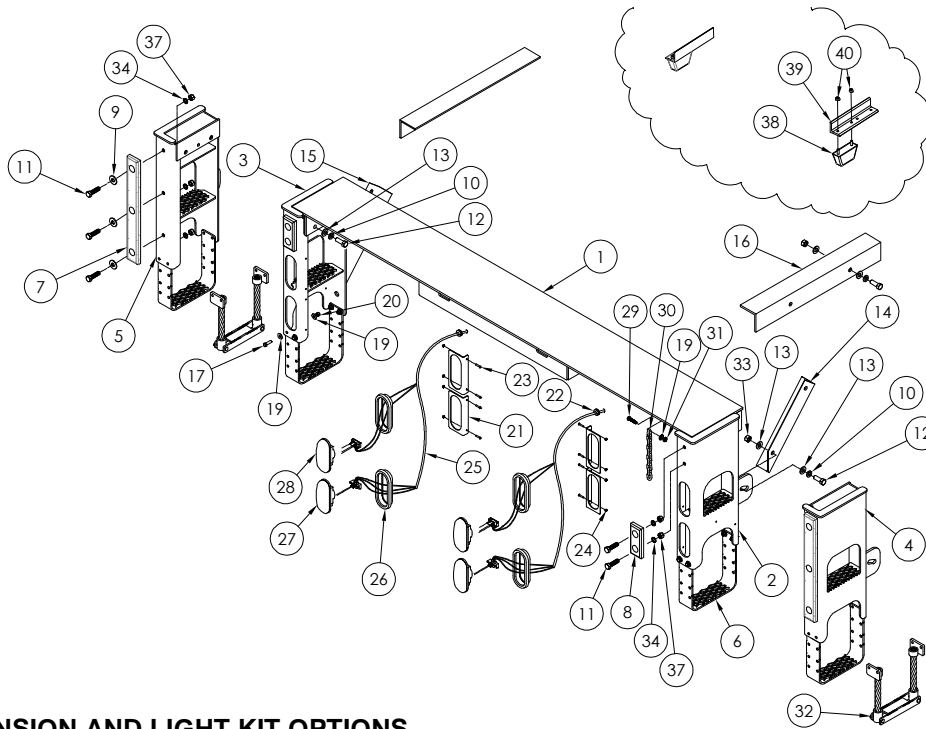
^E Included in Dock Bumper Brace Kit 22796020

^F Included in Galvanized Dock Bumper Brace Kit 22796020GV

^G Included in Chain Anchor Kit 22745001

Use for liftgates shipped after
12-14-2015

See PM-794 for liftgates
shipped before 12-14-2015



BED EXTENSION AND LIGHT KIT OPTIONS

ITEM	PART NUMBER	QTY	DESCRIPTION
1	70430610	1	Hydraulic Pump Unit, 2400 PSI, HLF-25, 30
	70430620		Hydraulic Pump Unit, 3200 PSI, HLF-40, 50
A	70401513 ^A	1	Hydraulic Reservoir
B	70091734 ^A	1	Breather
C	7043002-1 ^A	1	Motor
D	70092403 ^A	2	Starter Solenoid (4 Post)
E	70092503 ^A	1	Valve Assembly, 2-way, 2 pos w/ Coil
F	75089854 ^A	1	Fuse, 15 Amp
G	10099309 ^A	1	Inline Fuse Assembly (Includes Fuse 75089854)
H	70400014 ^A	1	Valve Assembly, 4-way, 2 pos w/ Coil
J	75089473 ^A	1	Ground Cable (Part of Dual Cable)
K	70091291 ^A	1	Steel Plug
L	70091779 ^A	1	Connecting Strap
M	70091778 ^A	2	Solenoid Cable
N	70402303 ^A	2	Coil, 12V, 25 Watt
P	70401414 ^A	1	Plug, SAE O-ring, 9/16-18 Hex
2	22780060	2	Hydraulic Cylinder, HLF-25, 30, & 40
	22780050		Hydraulic Cylinder, HLF-50
3	75089251 ^B	4	Clamp Half, Hose
	75089252 ^B	2	Cover Plate, Hose Clamp
	75089253 ^B	2	Hex Bolt, 5/16-18 x 1-3/4"
4	22718501	1	Hose Guard Assembly
	22718505		Hose Guard Assembly, Zinc Plated
5	75082894	2	Bulkhead Elbow, 90, 3/8" JIC M X 3/8" JIC M with Nut
6	75082869	4	Elbow, 90, 3/8" JIC M X 3/8" ORB M
7	75083132	2	Tee, 3/8" JIC M X 3/8" ORB M
8	22781010	1	Lock Valve Harness
9	7500077-16	2	Hose, 3/8" ID X 3/8" JIC
10	7500077-15	2	Hose, 3/8" ID X 3/8" JIC
11	22796201	1	Hardline Hose Assembly, 3/8" JIC
12	22796101	1	Hardline Hose Assembly, 3/8" JIC

ITEM	PART NUMBER	QTY	DESCRIPTION
13	7500111-1	2	Bushing, 9/16" ID x 1" OD x 14 Ga
14	22781503	1	Cylinder Lock Valve

^A Included in Pump Assembly 70430610 & 70430620.

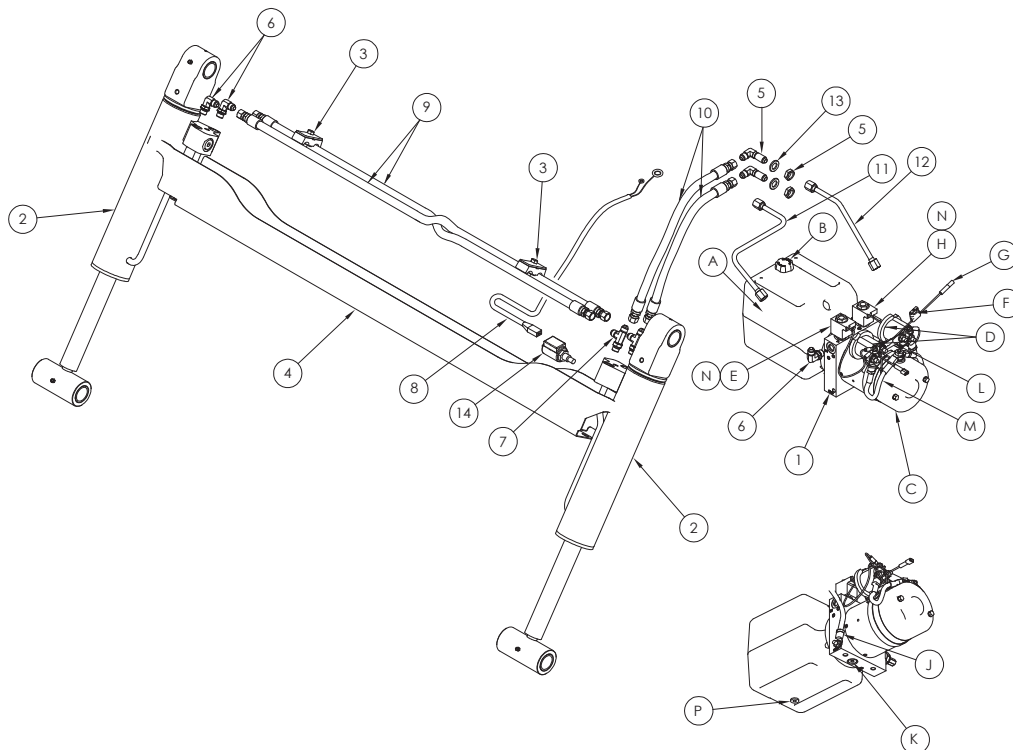
^B Included in Hose Guard Assembly 22718501 & 22718505.

WALTCO LIFT CORP.
HLF-25, -30, -40, & -50

REVISED: 4-4-2016
E.O. 7897
REV. 14

PM-795

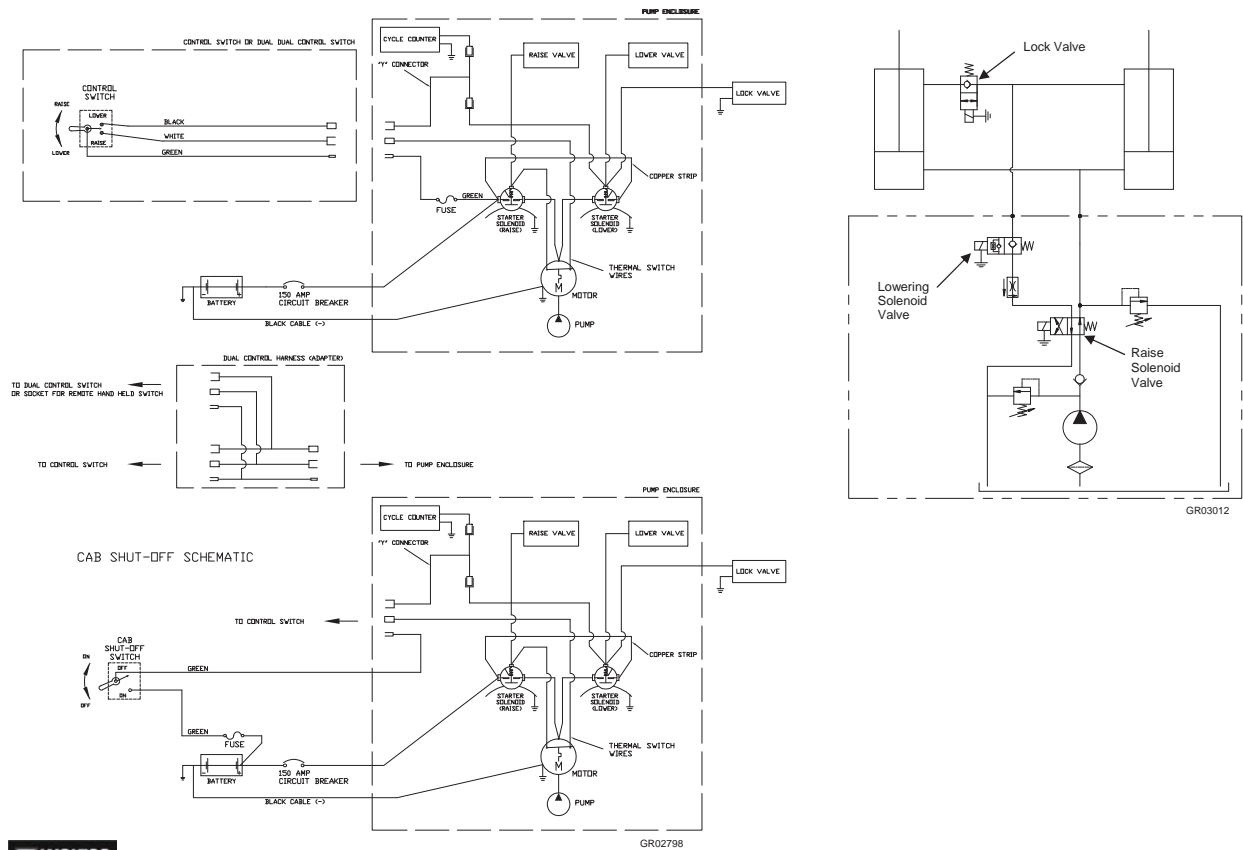
HYDRAULIC LAYOUT



WALTCO LIFT CORP.
HLF-25, -30, -40, & -50

REVISED: 4-4-2016
E.O. 7897
REV. 14

PM-795



WALTCO LIFT CORP.
HLF-25, 30, 40, & 50

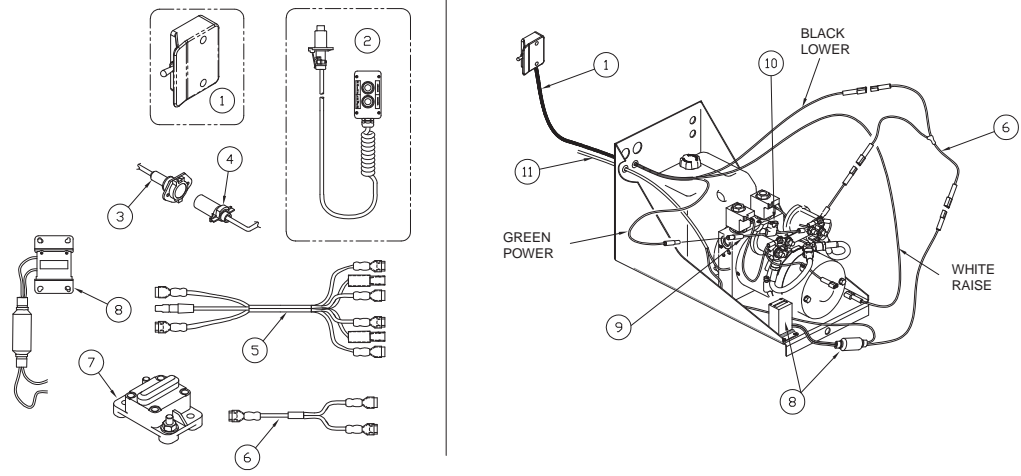
REVISED: 5-2016
E.O. 7921
REV. 08

PM-796

ELECTRIC CONTROL OPTIONS

ITEM	PART NUMBER	QTY	DESCRIPTION
1	80001429	1	Switch Kit w/10ft Cord
2	10099325 ^A	1	Switch (Hand Held Remote)
3	75082038	1	Trailer Socket
4	75082037	1	Trailer Plug
5	10098413 ^A	1	Dual Control Harness
6	10098904	1	"Y" Connector
7	75089243 75089254	1	150 Amp Circuit Breaker, HLF 25, 30,40 200 Amp Circuit Breaker, HLF-50
8	80001312	1	Cycle Counter Kit
9	10099309	1	Fuse Holder
10	75089854	1	15 Amp Fuse
11	22781010	1	Lock Valve Harness

^A Included in Switch Hand Held Remote Kit 80000430.



WALTCO LIFT CORP.
HLF-25, 30, 40, & 50

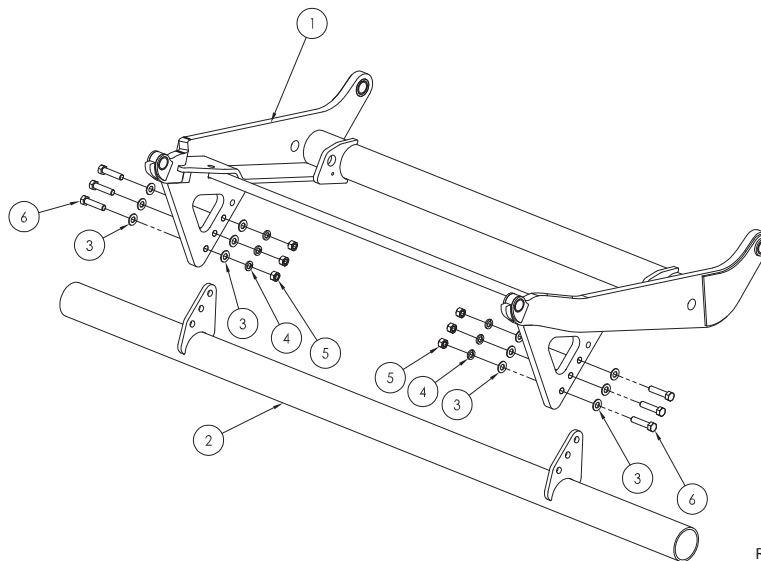
REVISED: 5-2016
E.O. 7921
REV. 08

PM-796

ITEM	PART NUMBER	QTY	DESCRIPTION
1		1	Lift Arm Weldment, Under-Ride
2	22780003 ^A	1	Under-Ride Bumper Weldment 96"
	22780003GV ^B		Under-Ride Bumper Weldment 96", Galvanized
	22780004 ^C		Under-Ride Bumper Weldment 102"
	22780004GV ^D		Under-Ride Bumper Weldment 102", Galvanized
3	75088064 ^{ABCD}	12	Washer, 5/8"
4	75088085 ^{ABCD}	6	Lock Washer, 5/8"
5	75085012 ^{ABCD}	6	Hex Nut, 5/8-11
6	7500010-7 ^{ABCD}	6	Hex Bolt, 5/8-11 x 2-3/4"

UNDER-RIDE BUMPER ASSEMBLY HLF

- ^A Included in Under-Ride Bumper Kit 22796015
^B Included in Under-Ride Bumper Kit, Galvanized 22796015GV
^C Included in Under-Ride Bumper Kit 22796016
^D Included in Under-Ride Bumper Kit, Galvanized 22796016GV



WALTCO LIFT CORP.
HLF

REVISED: 7/2013
E.O. 6909A
REV. 01

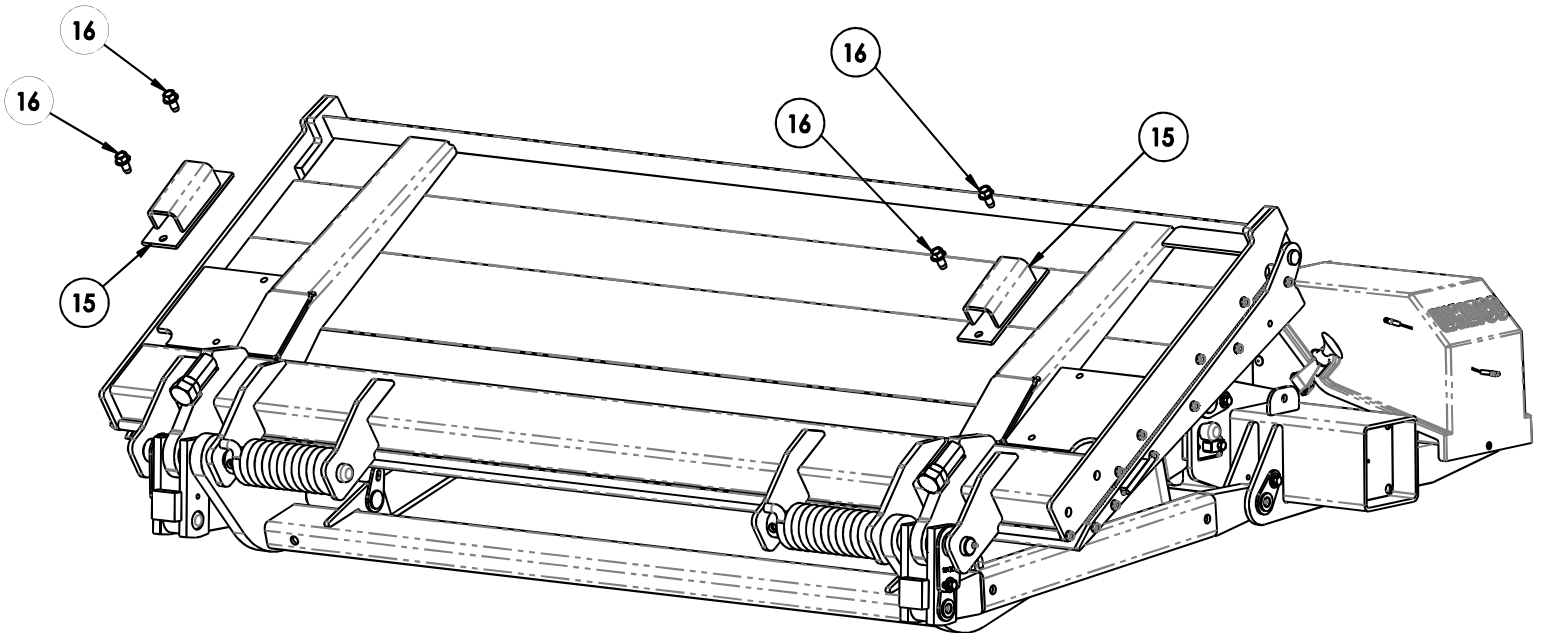
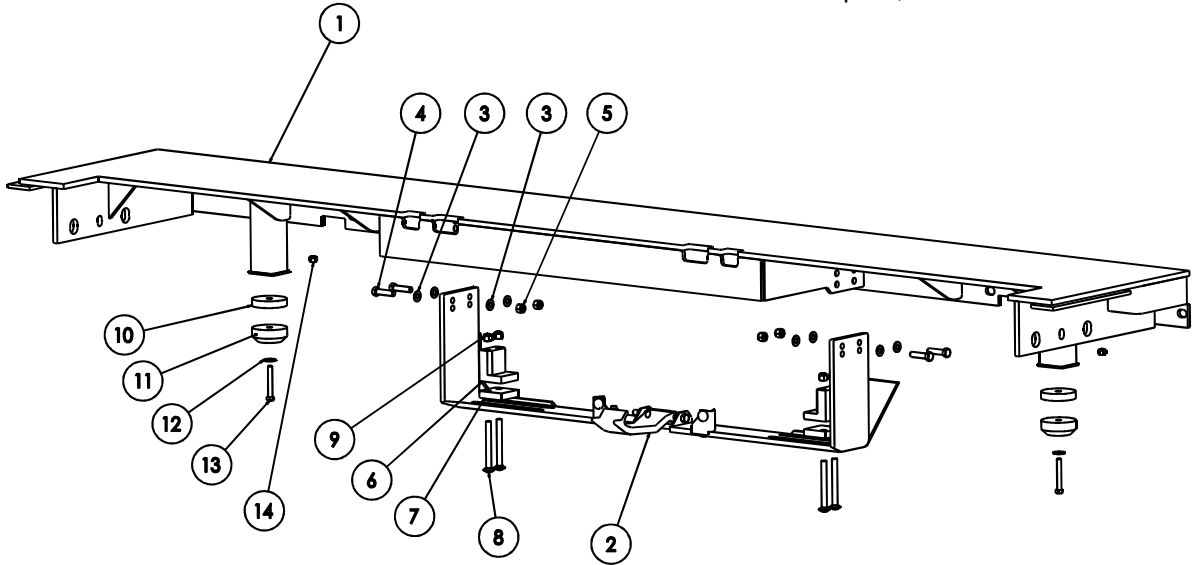
PM-874

ITEM	PART NUMBER	QTY	DESCRIPTION
1		1	Bed Extension, Walk Ramp
2	22765001 ^A	1	Walk Ramp Assembly
	22765001GV ^B		Walk Ramp Assembly, Galvanized
3	75088053 ^{AB}	8	Washer, 3/8"
4	75086058 ^{AB}	8	Hex Bolt, 3/8-16 x 1-1/2"
5	75085185 ^{AB}	4	Nut, 3/8-16, Lock
6	22765201 ^{AB}	2	Walk Ramp Guide, UHMW
7	22765250 ^{AB}	2	Spacer, Walk Ramp Guide, UHMW
8	75087505 ^{AB}	4	Carriage Bolt, 3/8-16 x 3-1/2"
9	75085185 ^{AB}	4	Nut, 3/8-16, Lock

ITEM	PART NUMBER	QTY	DESCRIPTION
10	22765260 ^{AB}	4	Spacer, Puck, UHMW
11	22714201 ^{AB}	2	Guide, Puck, UHMW
12	75088052 ^{AB}	2	Washer, 5/16"
13	7500010-38 ^{AB}	2	Hex Bolt, 5/16-18 x 2-1/4"
14	75085177 ^{AB}	2	Nut, 5/16-18, Lock
15	22716801 ^A	2	Up-Stop Bracket
	22716801GV ^B		Up-Stop Bracket, Galvanized (option)
16	75086864 ^{AB}	4	Hex Screw, 1/2-13 x 1", self-tapping

^A Included in Walk Ramp Kit 22766001

^B Included in Walk Ramp Kit, Galvanized 22766001GV



WALK RAMP ASSEMBLY (HLF)

WALTCO LIFT CORP.
HLF-40 & 50

REVISED: 1-12-15
E.O. 7630
REV 02

PM-875

IMPORTANT

WARNING

Improper operation and maintenance of this liftgate could result in severe personal injury or death.

Read and understand the contents of liftgate Owner's manual and all warning and operation decals before operating and/or performing maintenance on this liftgate.

For SAFETY information on this liftgate see Chapter 1 of Owner's manual