

HIAB X-DUO 178



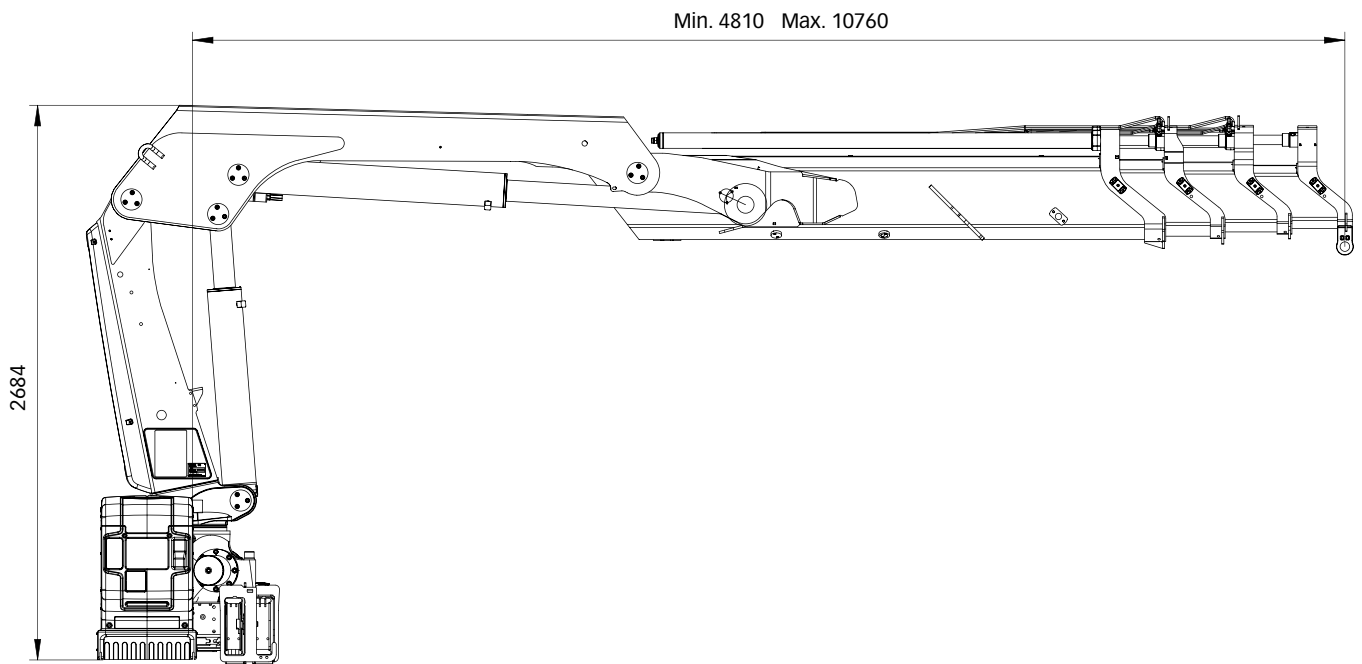
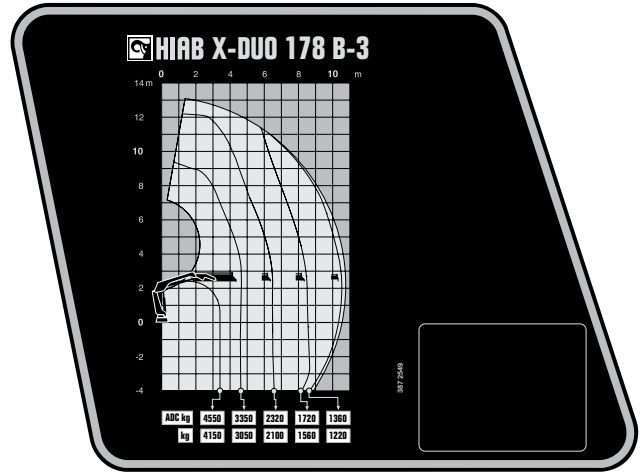
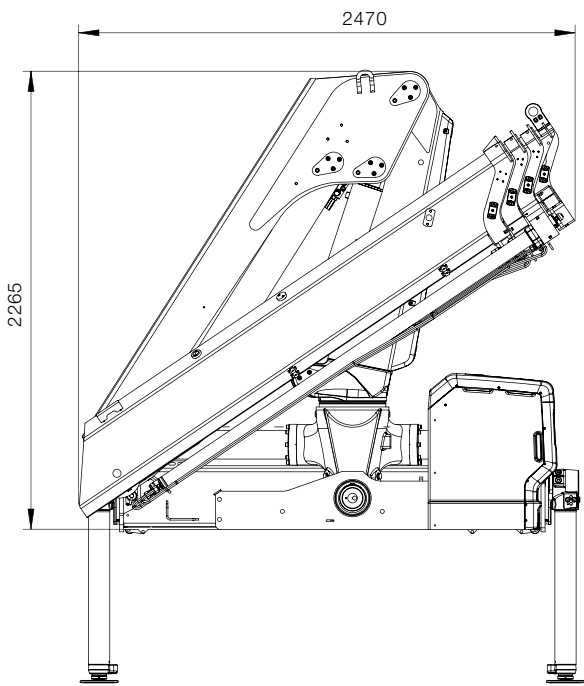
HIAB X-DUO 178 BASIC DATA

BASIC DATA	X-DUO 178 B-2	X-DUO 178 B-3	X-DUO 178 B-4	X-DUO 178 BS-2	X-DUO 178 E-5
Mdyn	209 kNm	212 kNm	214 kNm	216 kNm	221 kNm
Lifting capacity (kNm)	144	139	135	144	133
Lifting capacity (tm)	14,7	14,2	13,8	14,7	13,5
Lifting capacity (ADC) (kNm)	157	152	148	157	146
Lifting capacity (ADC) (tm)	16	15,5	15,1	16	14,8
Outreach - lifting capacity, standard (m-kg)	3,2 - 5 000	3,4 - 4 550	3,4 - 4 450	2,9 - 5 500	3,2 - 4 650
	4,6 - 3 450	4,6 - 3 350	4,6 - 3 200	4,3 - 3 750	4,9 - 3 000
	6,4 - 2 460	6,4 - 2 320	6,4 - 2 200	6,1 - 2 600	6,7 - 2 040
	8,4 - 1 860	8,4 - 1 720	8,4 - 1 580	8,1 - 1 940	8,7 - 1 460
		10,5 - 1 360	10,4 - 1 240		10,7 - 1 120
		12,5 - 1 020		12,8 - 890	
				15 - 750	
Outreach - lifting capacity, manual extensions (m-kg)	10,4 - 1 420	12,6 - 1 060	14,8 - 790	10,2 - 1 460	17,4 - 420
Hydraulic outreach, standard (m)	8,6	10,8	12,9	8,3	15,2
Hydraulic boom extension (m)	3,9	6,0 m	8,1 m	3,9 m	10,3 m
Outreach, manual extensions (m)	10,8	13	15,2	10,5	17,5
Lifting height above installation level, (hydr/man)	11,1 / 13,2	13,2 / 15,4	15,3 / 17,6	10,8 / 12,9	17,6 / 20,0
Rec. oil flow (l/min)	45 - 55	45 - 55	45 - 55	45 - 55	45 - 55
Working pressure (Mpa)	30,8	30,8	30,8	30,8	31,3
Oil in tank (l)	92 - 200	200	92 - 200	92 - 200	92 - 200
Tank capacity (l)	0 - 235	0 - 235	0 - 235	0 - 235	0 - 235
Slewing angle°	190 - 415	190 - 415	190 - 415	190 - 415	190 - 415
Max slope viable at full capacity (°)	5	5	5	5	5
Slewing torque, gross (kNm)	28,3	28,3	28,3	28,3	28,3
Slewing speed 80 (°/s)	15	15	15	15	15
Slewing speed (°/s)	15	15	15	15	15
Lifting speed at standard hydraulic outreach (m/s)	1,3	1,6	1,9	1,2	2,2
Height in folded position (mm)	2 265	2 265	2 265	2 265	2 260
Width in folded position (mm)	2 485	2 492	2 492	2 485	2 496
Install space required with hose and pipe kit (mm)	1 496	1 397	1 497	1 496	1 393
Crane in standard version without stabiliser system (kg)	1795	1 965	2105	1795	2365
Frame attachments (kg)	40 - 65	41 - 65	41 - 65	41 - 65	41 - 65
Stabiliser system (kg)	271 - 428	271 - 428	271 - 428	271 - 428	271 - 428

This table show one example of a model, and represents some of all options available. With the opportunity to configure your crane, we can provide you with a crane perfectly tailored to your needs.

Please contact your local dealer for more information and the exact data on the variety of options we can offer.

Hiab X-DUO 178 B-3



BUILT TO PERFORM

Hiab is the world's leading provider of on-road load handling equipment. Customer satisfaction is the first priority for us. Hiab's product range includes HIAB loader cranes, JONSERED recycling and forestry cranes, LOGLIFT forestry cranes, MOFFETT truck mounted forklifts and MULTILIFT demountables, as well as DEL, WALTCO and ZEPRO tail lifts.

hiab.com

Hiab is part of Cargotec.

cargotec.com



© BD-XDU0178-EN-WW_160810



hiab.com