

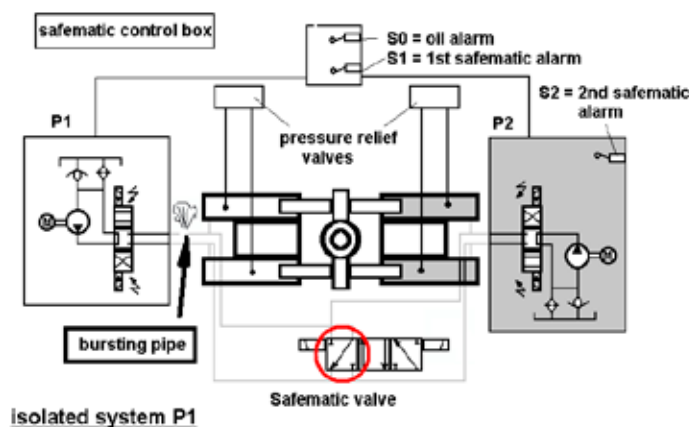
Steering gear

HATLAPA automatic isolation system SAFEMATIC



Structural features

- The Hatlapa SAFEMATIC complies with the latest rules and regulations of SOLAS 1974 and all leading classification societies
- Connectable to all Hatlapa Poseidon ram-type steering gear allowing automatic emergency operation with two independent hydraulic systems
- In case of pipe burst or other defects involving oil leaking, the leakage can be isolated and steering capability is maintained with two cylinders and one pump unit
- The Hatlapa SAFEMATIC detects, isolates and switches off the defective system automatically. Steering gear remains operational with the remaining system
- The ship's manoeuvrability is restored immediately and loss of hydraulic fluid is kept to a minimum, due to the very short time required for automatically detecting, isolating and switching over



MacGregor shapes the offshore and marine industries by offering world-leading engineering solutions and services with a strong portfolio of MacGregor, Hatlapa, Porsgrunn, Pusnes and Triplex brands. www.macgregor.com

MacGregor is part of Cargotec (Nasdaq Helsinki: CGCBV).

Published by MacGregor. Copyright © MacGregor April 2016. All rights reserved. No part of this publication may be reproduced, stored, photocopied, recorded or transmitted without permission of the copyright owner.

MacGregor Hatlapa GmbH & Co. KG

hatlapa.info@macgregor.com

www.macgregor.com

